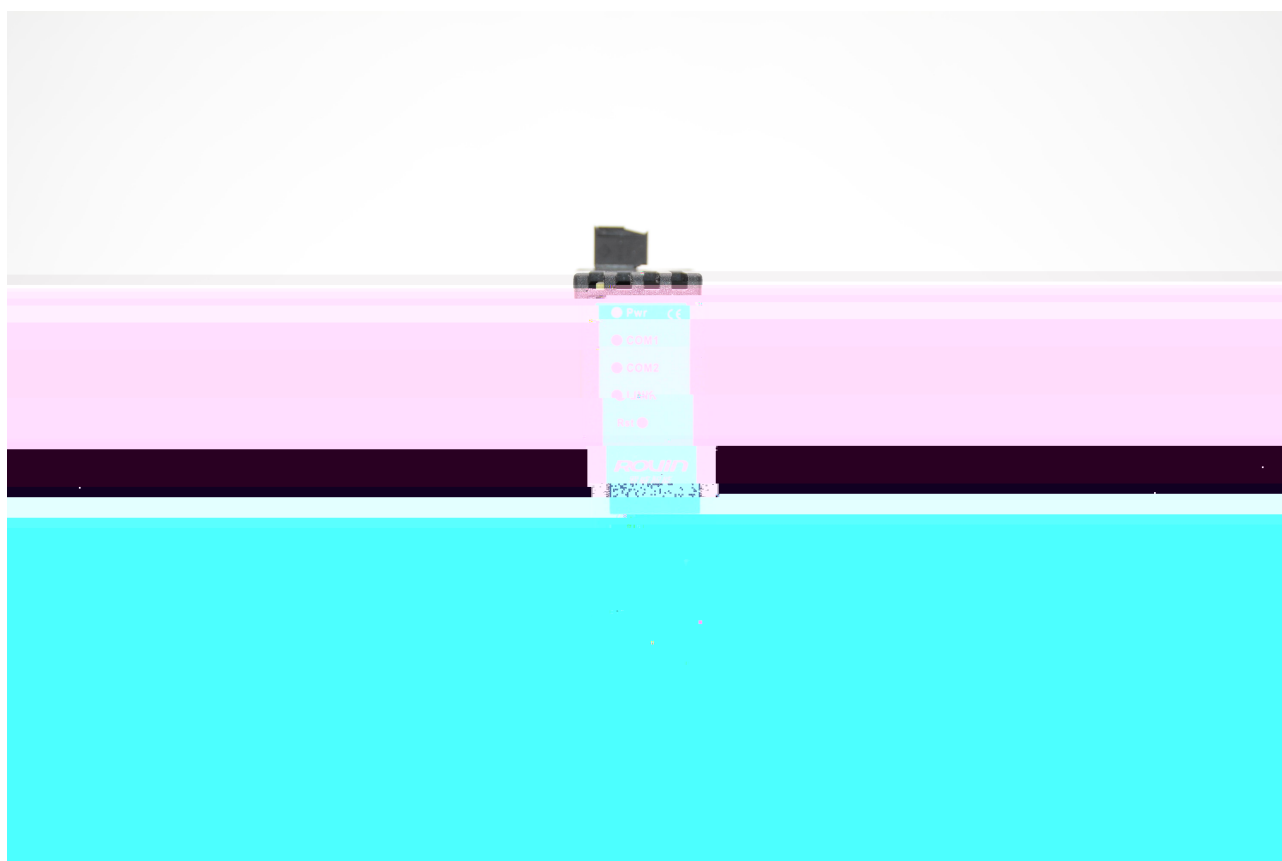
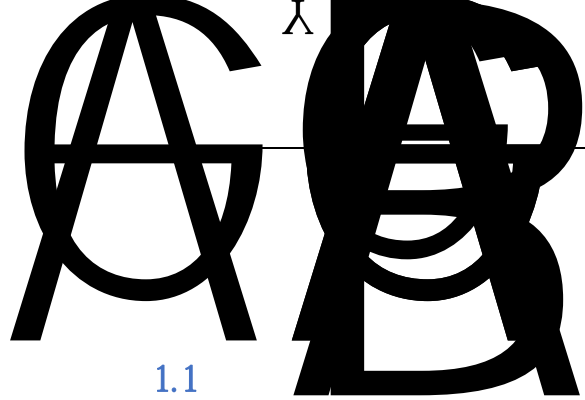




RVNet-MB

Modbus





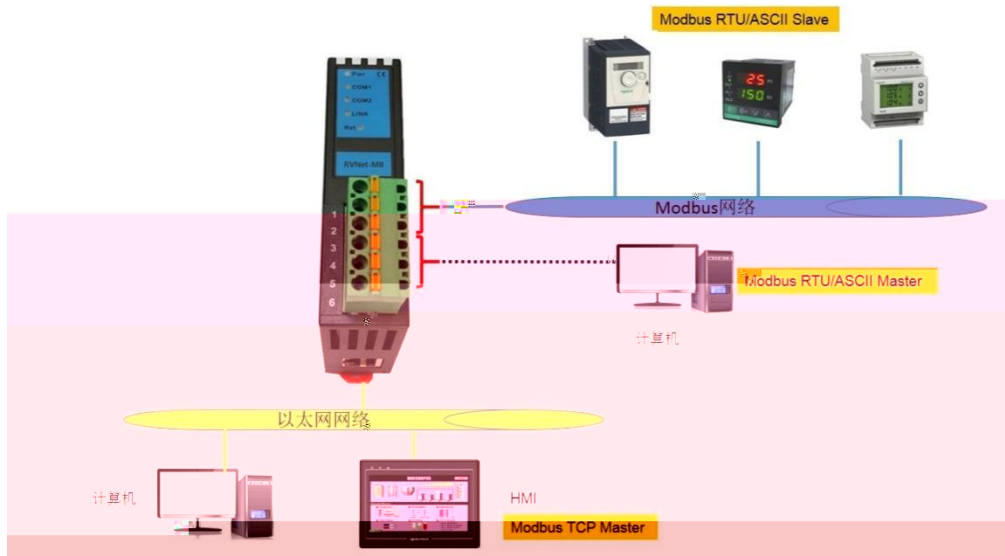
1.1

RVNet-MB



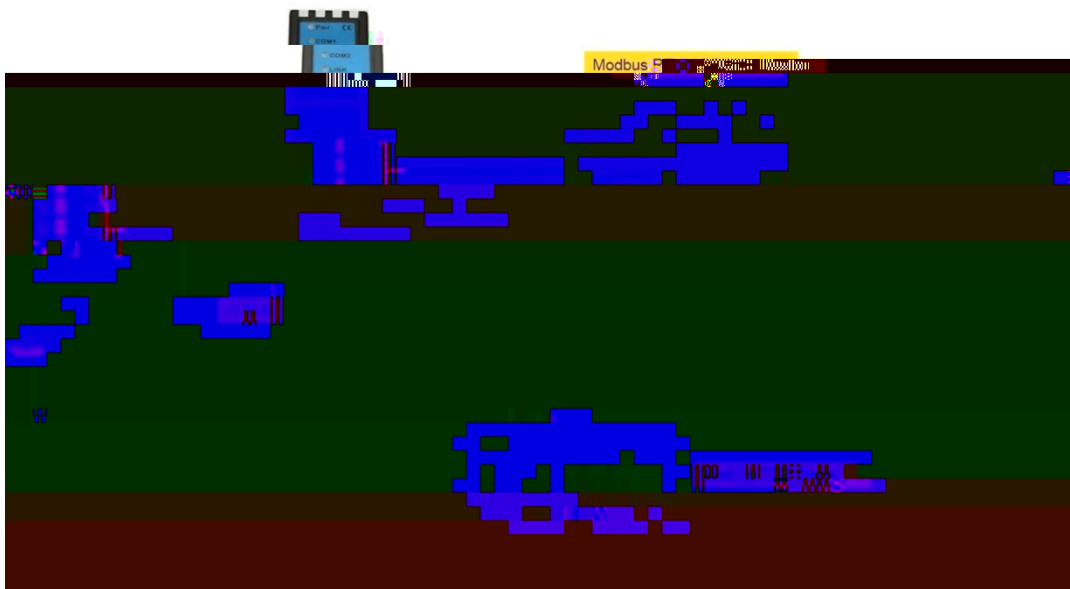
2.2

2.2.1



- | | | | |
|----|--------|------------------|--------------|
| 1. | Modbus | Modbus | X2 |
| 2. | 6 | Modbus RTU/ASCII | |
| 3. | Modbus | RS485 | RS232 Modbus |
- Mosbus

2.2.2



- | | | | |
|----|----|------------------|------------|
| 1. | | Modbus RTU/ASCII | Modbus TCP |
| 2. | X2 | | |

23

RVNet-MB	4	X1	X2	RJ45	X3	X4
----------	---	----	----	------	----	----

Internet Explorer

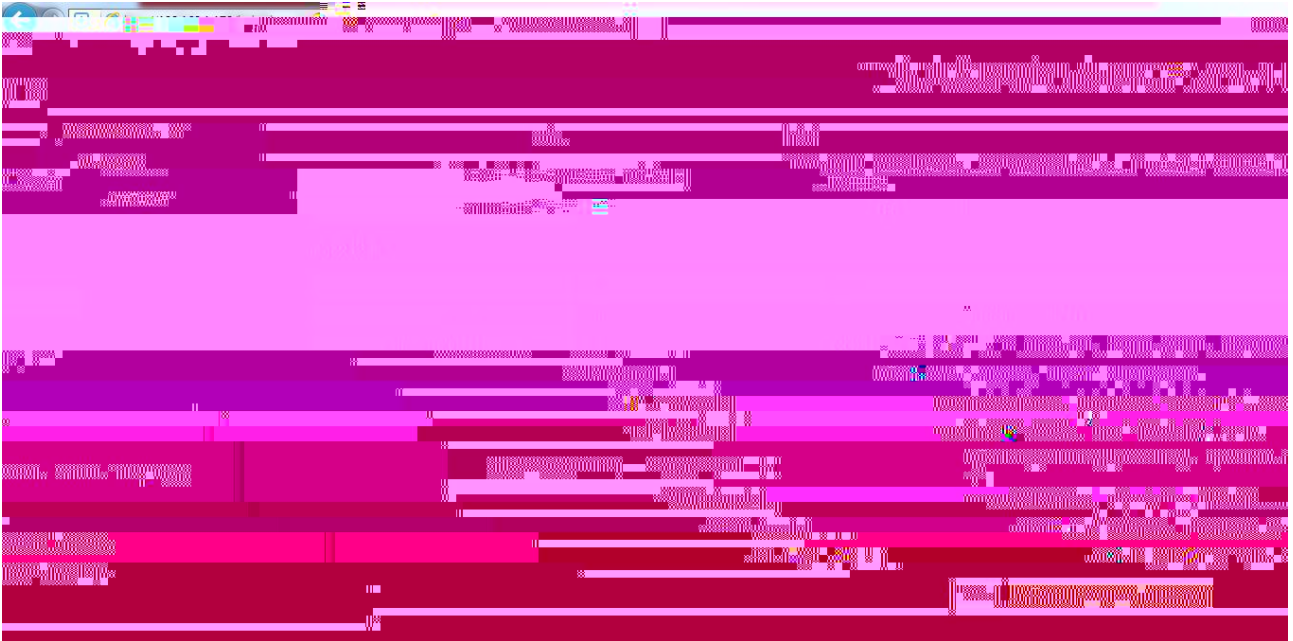
t

192.168.1.1

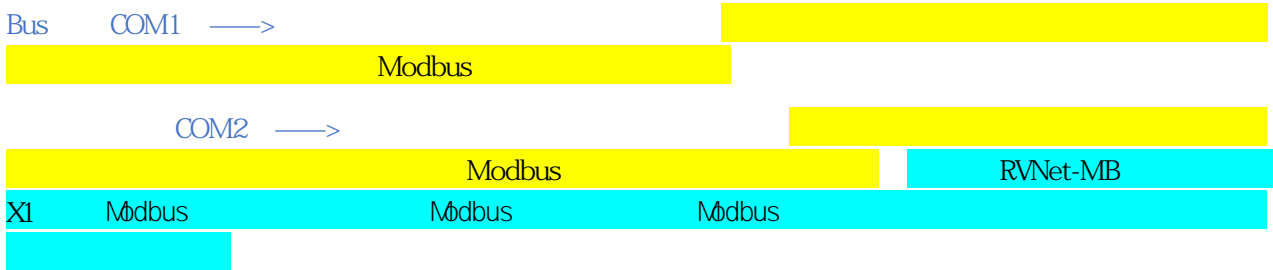
t

r

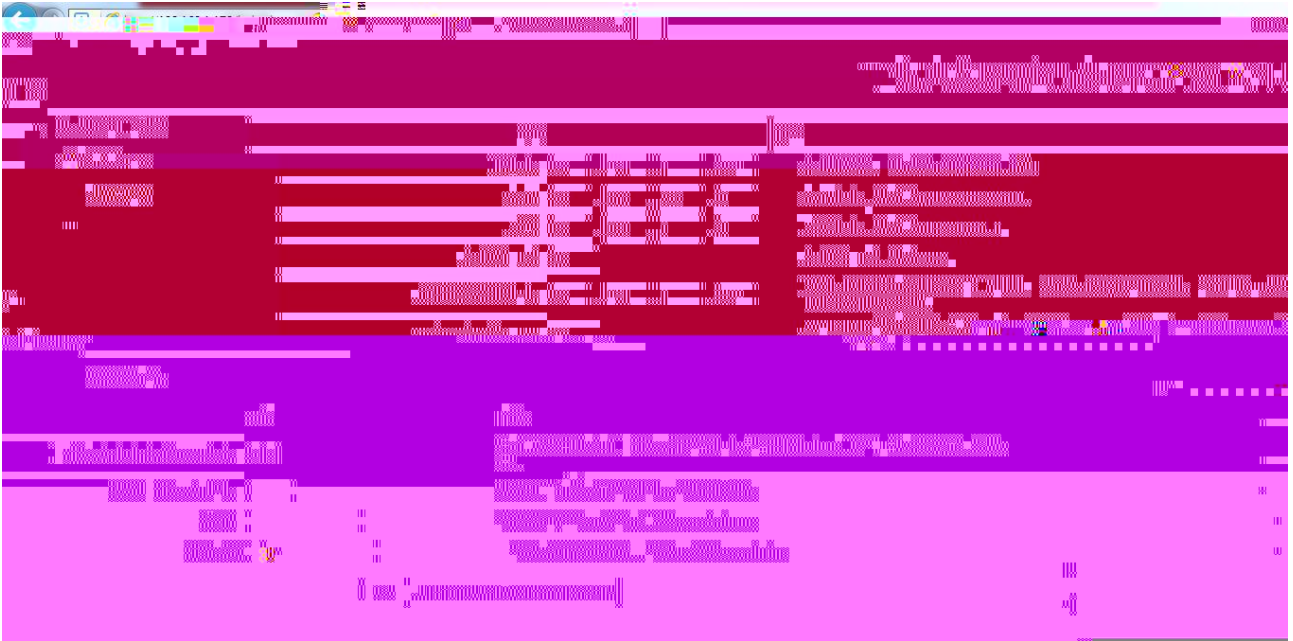
3.2.1



RVNet-MB Bus —TCP Bus —TCP RVNetTCP
 Bus —TCP RVNet-MB Modbus Modbus
 TCP TCP , 22
 RVNet-MB 3
 RTU ASCII RTU



3.2.2



RVNet-MB IP

[]

RVNet-MB

IP

ModbusTCP

502

IP

RVNet-MB

IP

Bus

—TCP

RVNet-MB

Bus

—TCP

Modbus

“ ”

Bus

—TCP

“

”

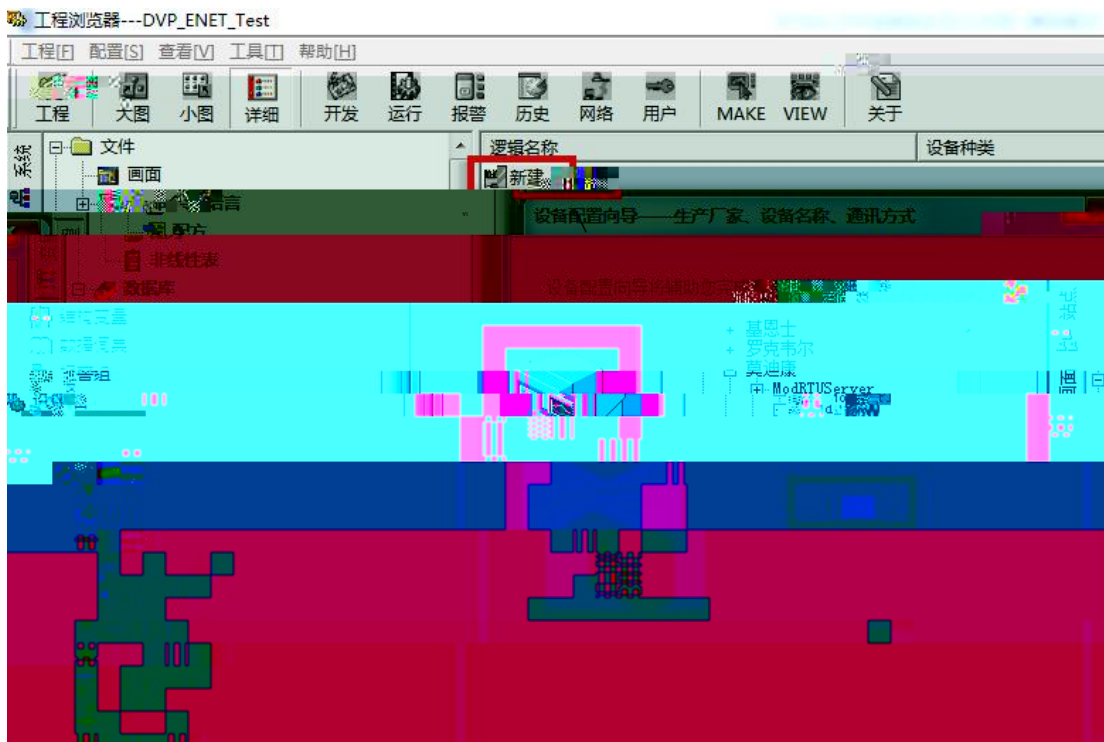
modbus

Bus

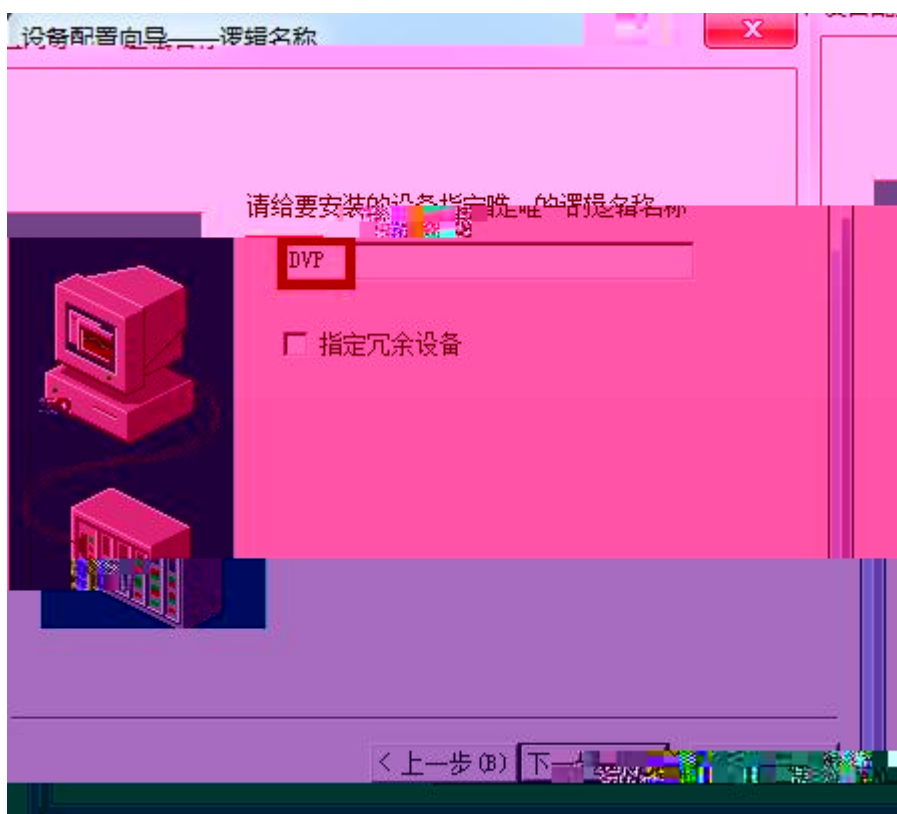
—TCP

[]

RVNet-MB



3.



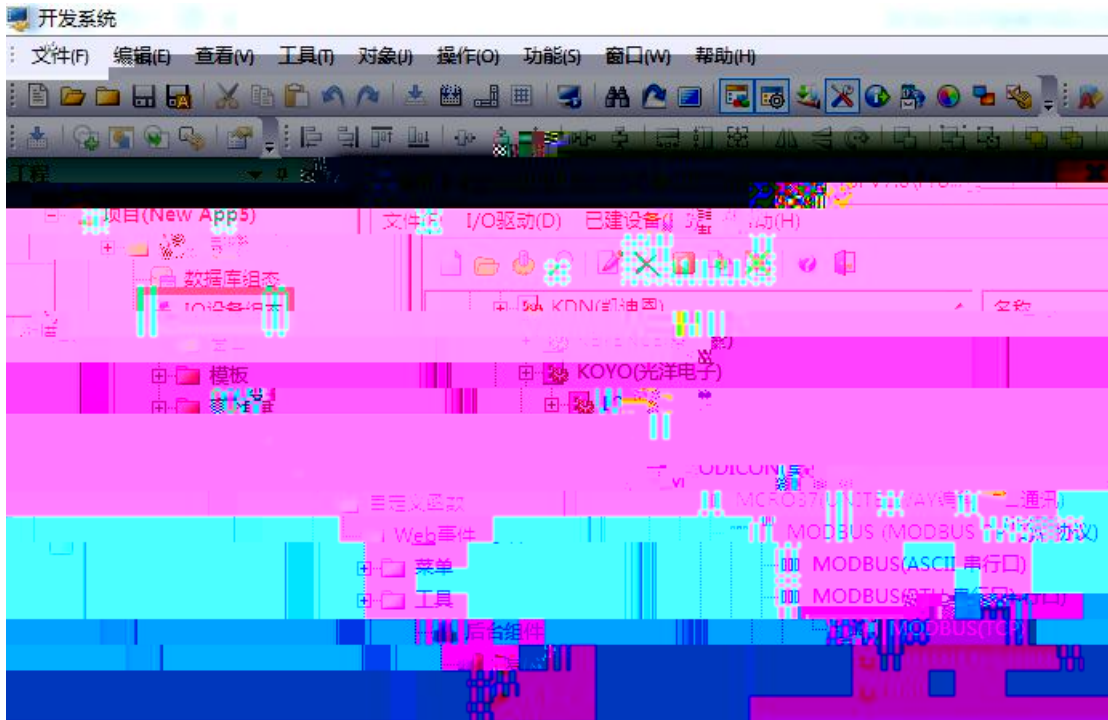
4.

RVNet-MB Pr

/

4.2 RVNet-MB

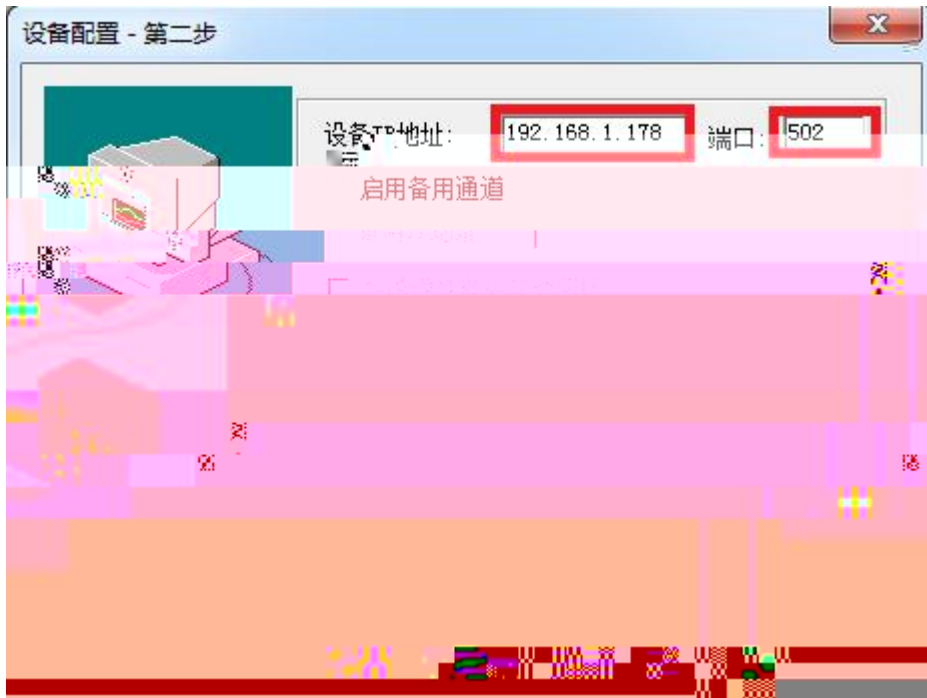
1. " IO " PLC " MODI CON - MODBUS TCP "



2. " " DVP " " 1



3. " IP " RVNet-MB IP 192.168.1.178 " " 502

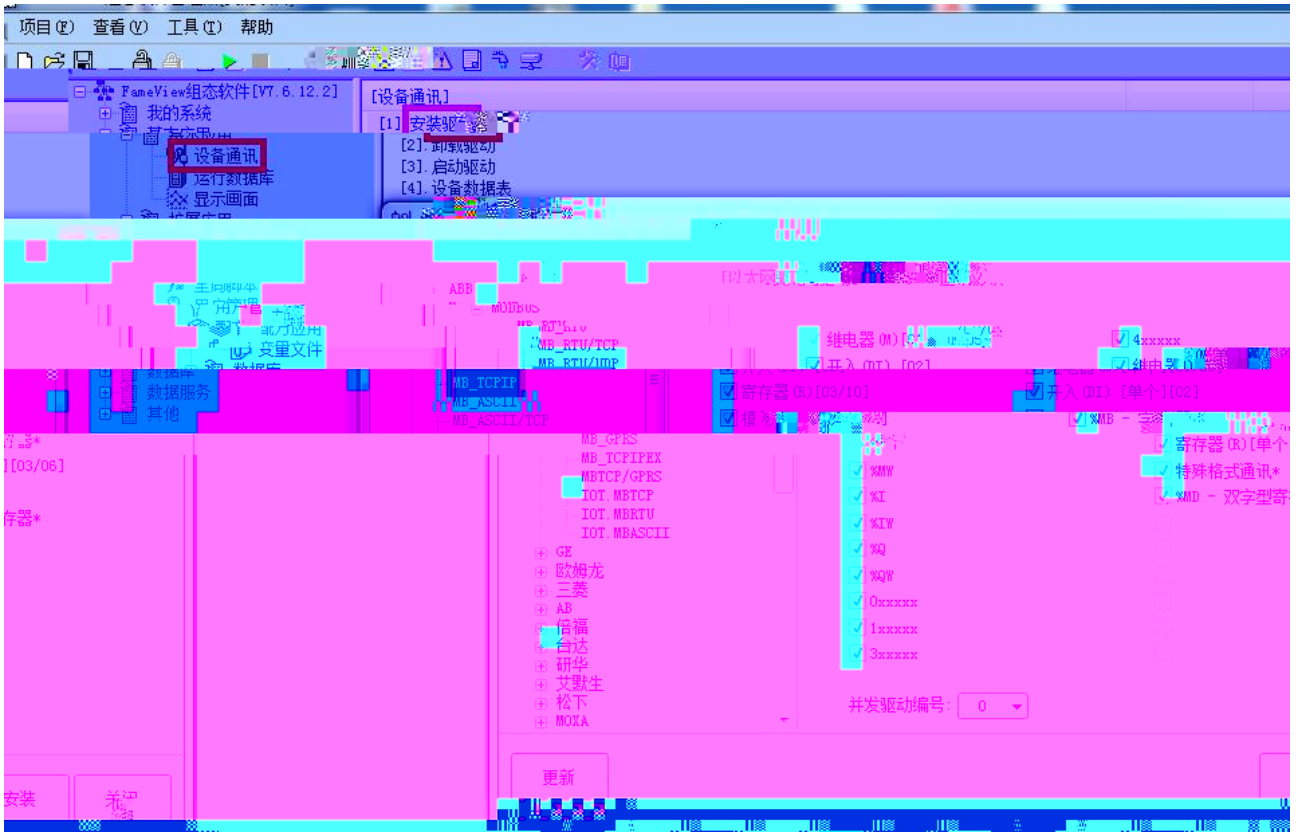


4.

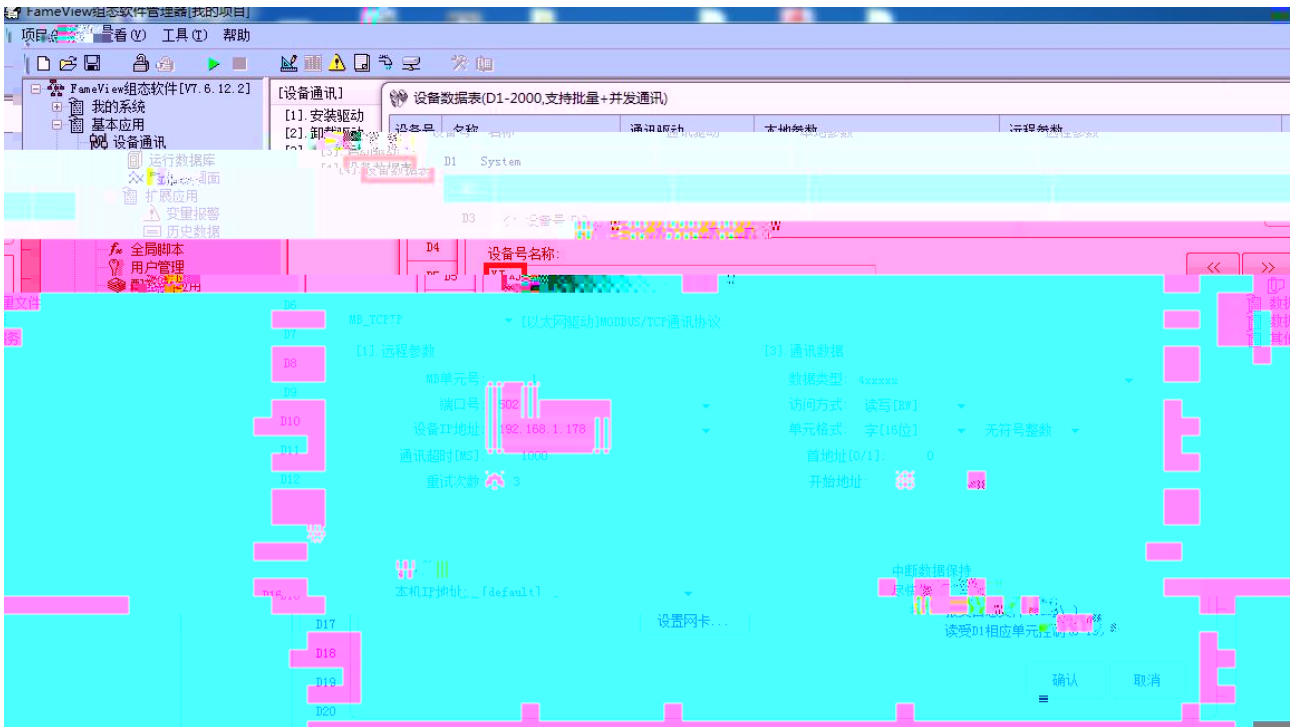


4.3 RVNet-MB

1. " " " " " MB_TCPI P " "

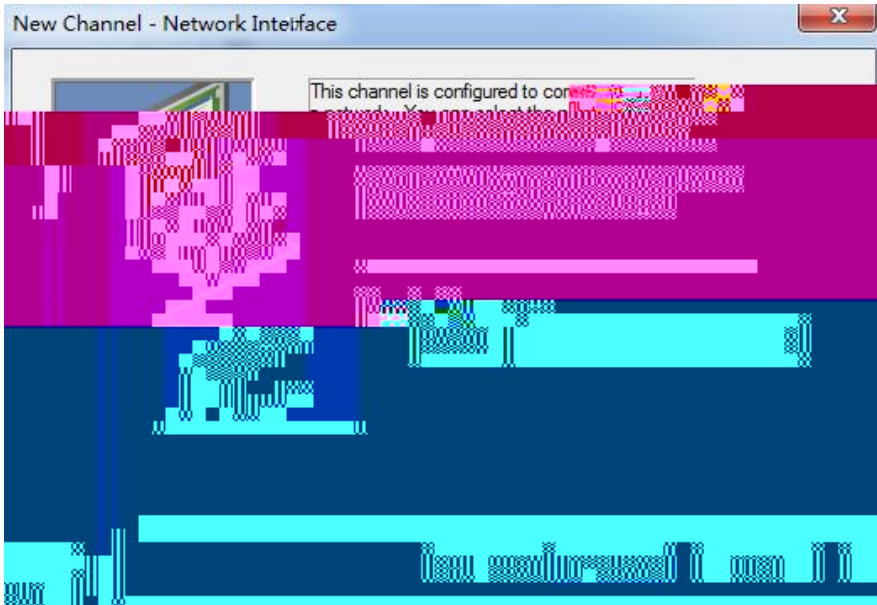


2	"	"	"	"	XJ	"	MB	"	MB
							502		IP
									RVNet-MB

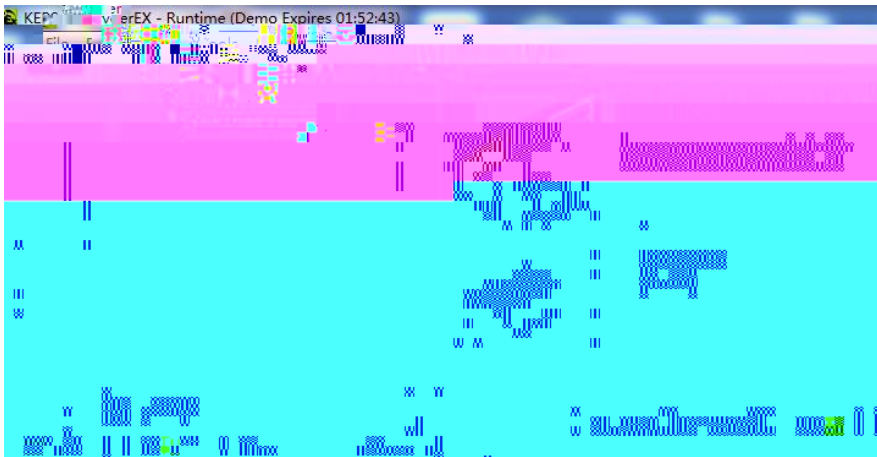


4.4 RVNet-MB Kepware

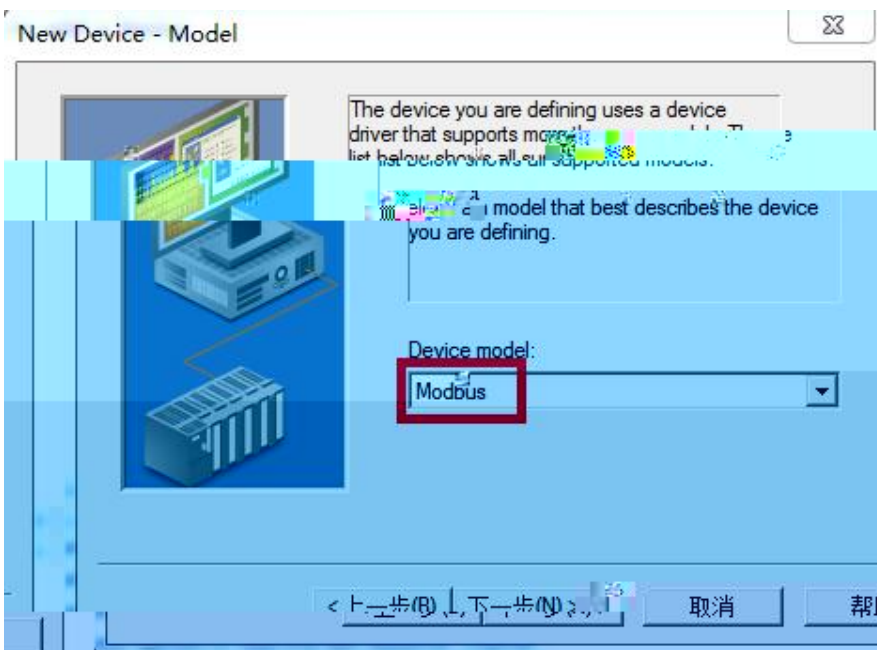
1. KEPServerEX “ Click to add a channel ” i



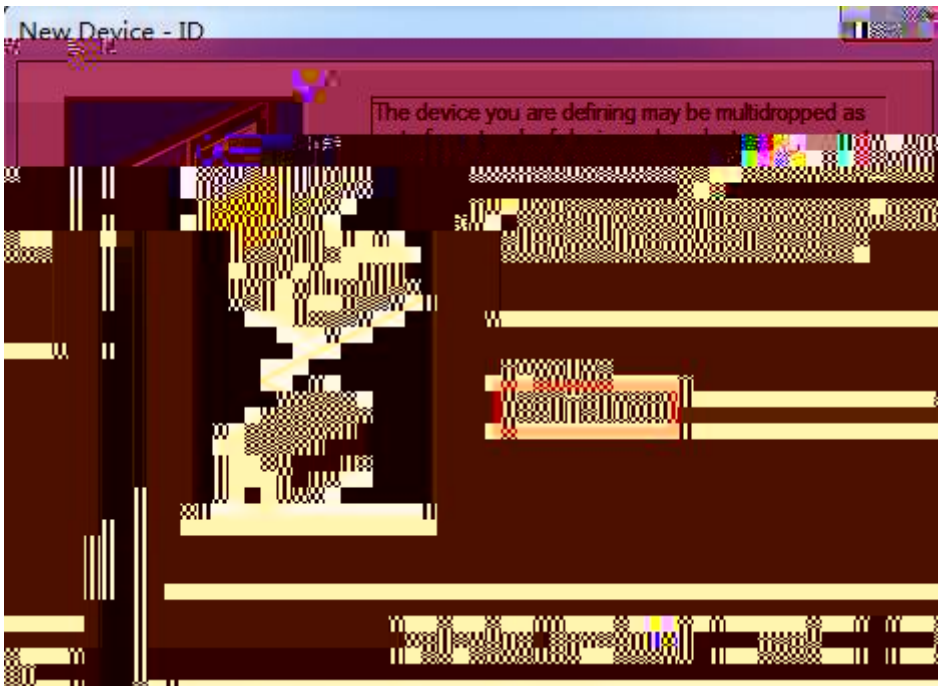
4. " click to add a device" ,



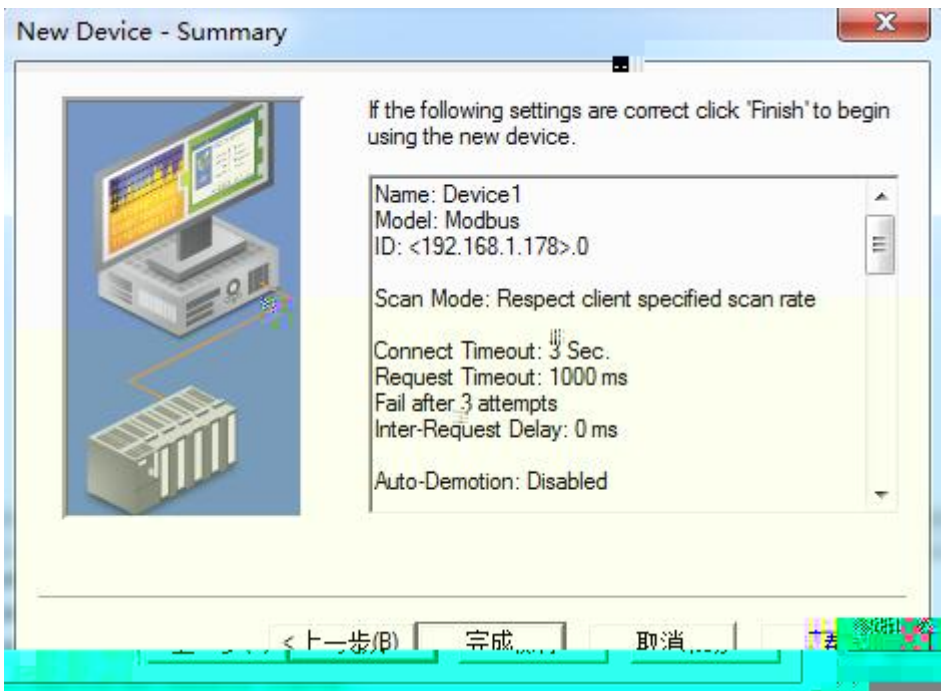
5. " Device Model " " Modbus"



6. " Device ID" IP 192.168.1.178.0 Modbus

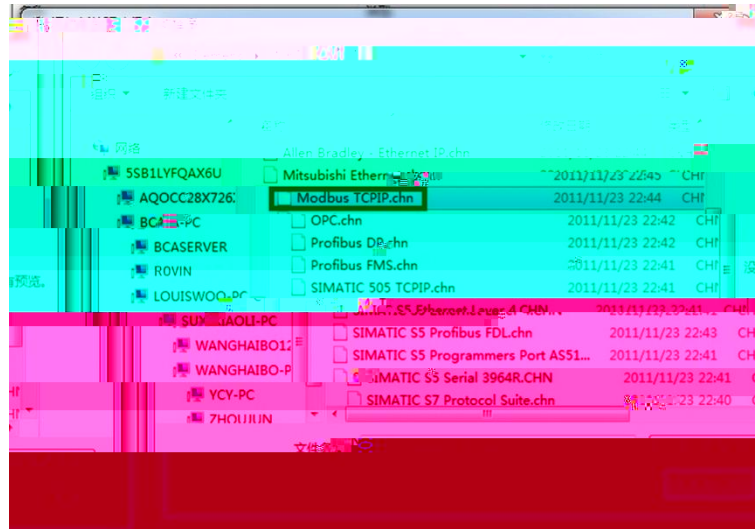


7.



4.5 RVNet-MB WINCC

1. Wincc " " " i



2. “Modbus TCP/IP #1” “ ” “ ”
 “ CPU ” “ 984” “ ” RVNet-MB IP “ ” 502 ”
 “ Modbus



RVNet-MB

Modbus

Pwr COM1 COM2 Link

IEEE 802.3 Link/Active

Auto-MDIX

RJ45

10/100Mbps

Modbus TCP

TCP	6
X1	RS485 RS232
	9.6K~115.2Kbps
	Modbus RTU/M

2755

250101

0531-88689022

0531-88689022

111

266107

0532-68894021 83029299

0532-83029299

18753243991 garywei@dingtalk.com

www.roviniot.com

