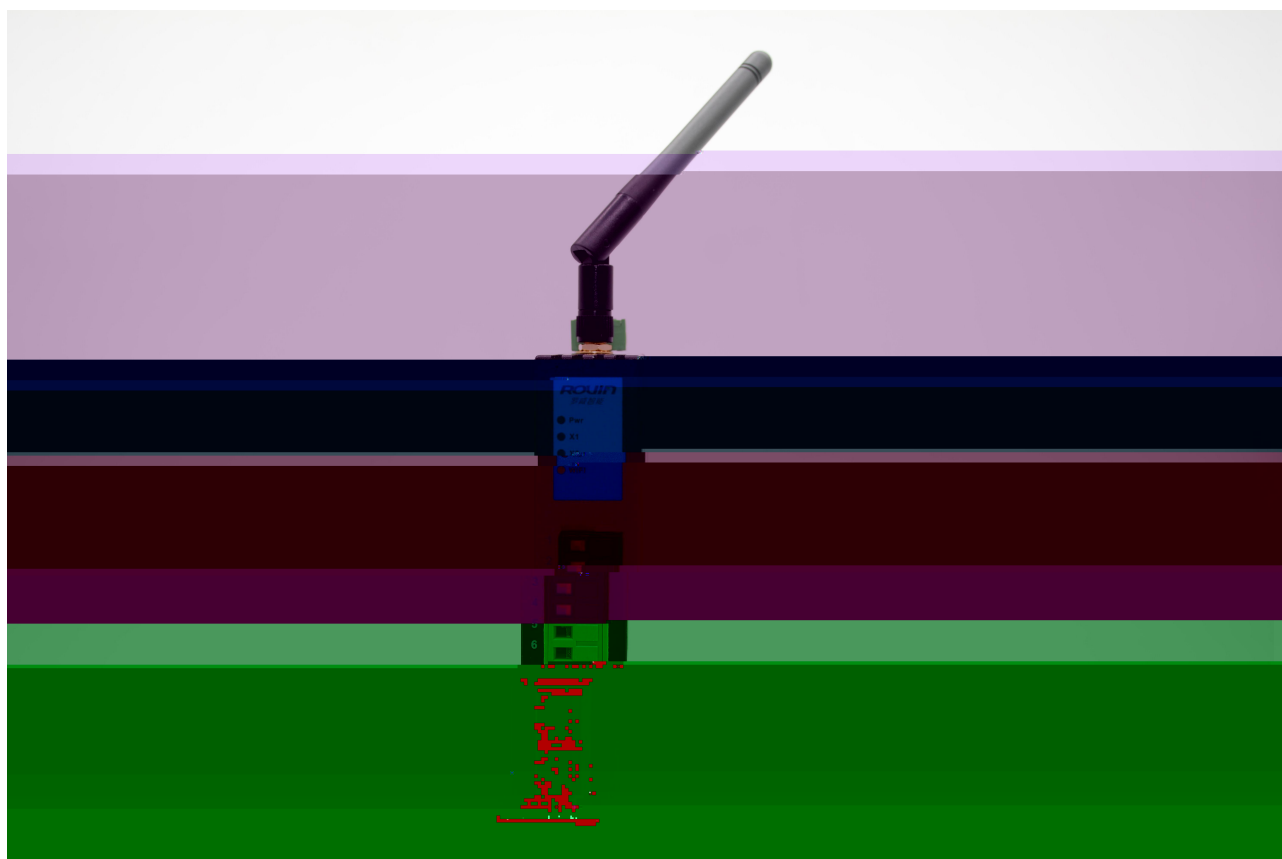


**ROVIN**

RVNet-MB-S

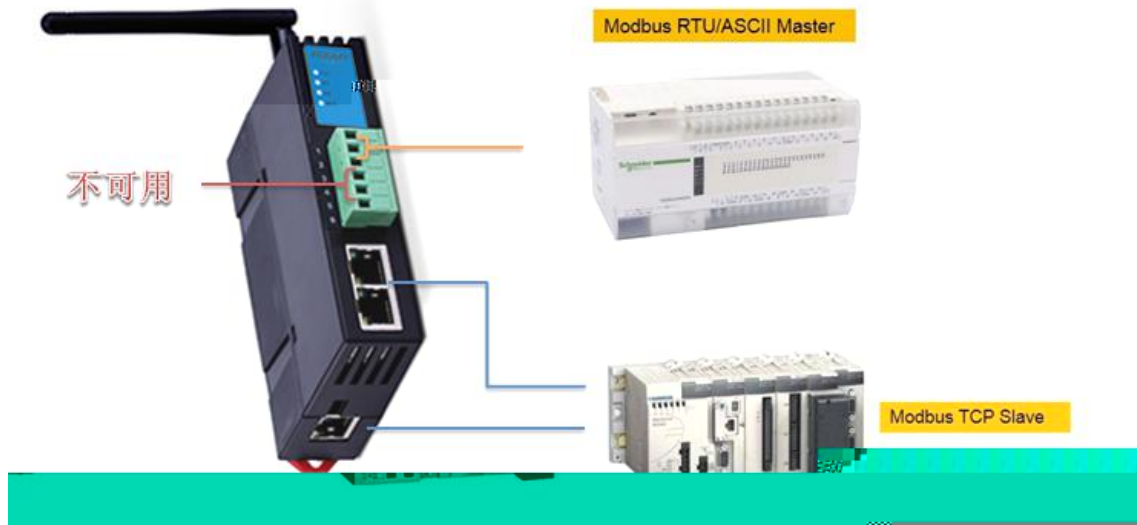


## 1.RVNet-MB-S




# W

ROVIN Automatat



- 1. Modbus RTU/ASCII
- 2. X2 Modbus TCP

RVNet-MB-S X5 6 X6 X1 X2 RJ45 X3 RJ45 X4

X1 3 Modbus RTU/ASCII

<b>RS485</b>	
1	Date+
2	Date-
3	GND

<b>RS232</b>	
1	RD
2	SD
3	GND

X1 9.6k~115.2k

X2 3

Modbus RTU/ASCII

RS485	
4	Date+
5	Date-
6	GND

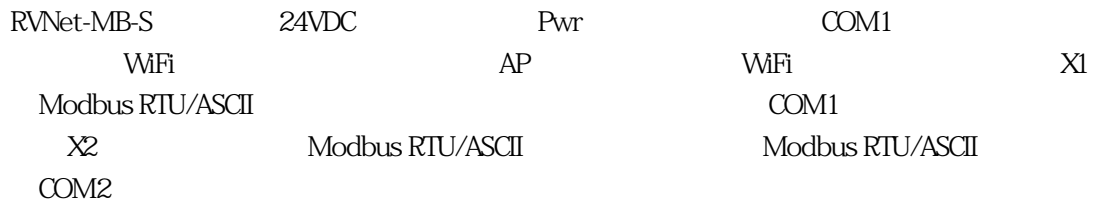
X2

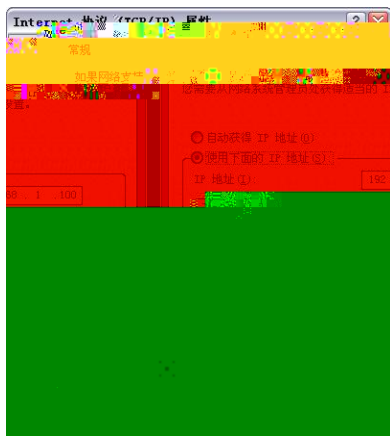
9

RVNet-MB-S COM2	LED LINK	Pwr	COM1	COM2	COM1 WiFi
	Pwr	COM1	COM2	WiFi	

### 3.

RVNet-MB-S





Internet Explorer

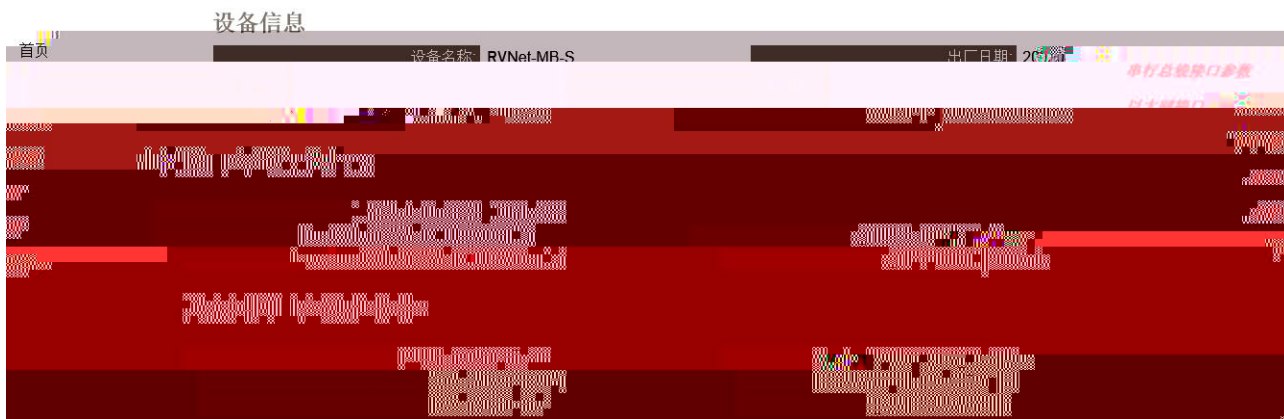
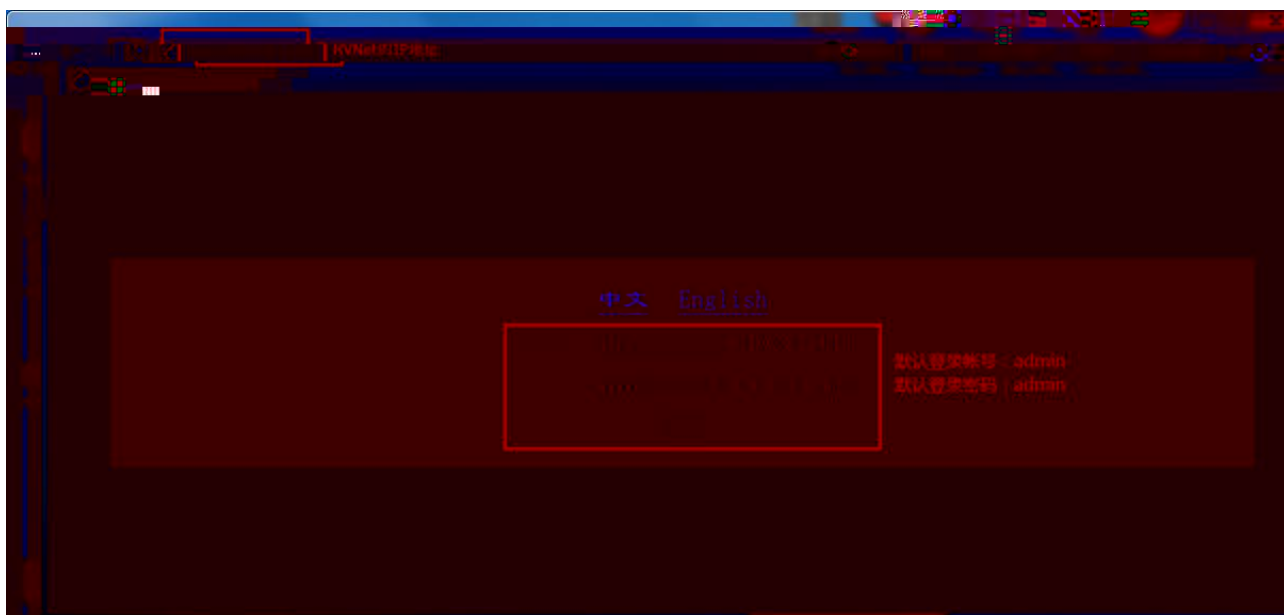
192.168.1.188

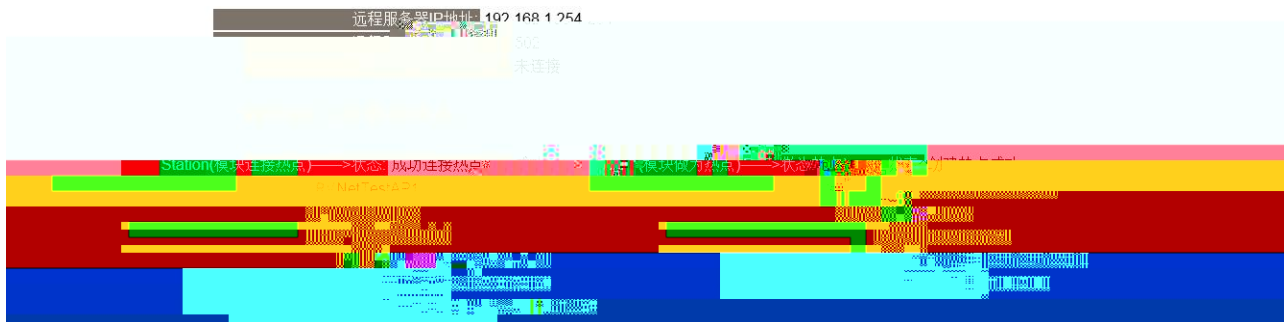
RVNet-MB-S

IP

RVNet-MB-S

Web .





Modbus RTU/ASCII

COM1 COM2

WiFi

WiFi

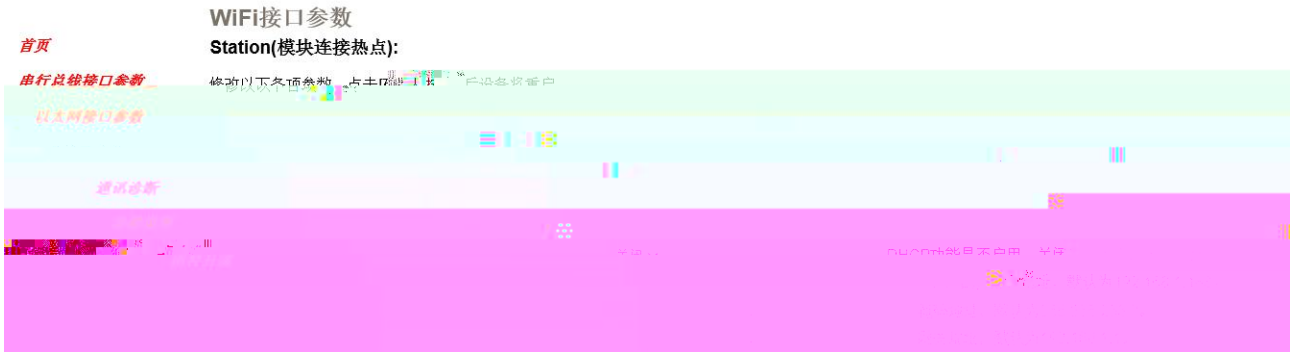
Station AP

É

ö

å





AP(模块作为热点):

设置	描述
AP功能: <input type="checkbox"/> 开启	AP功能是否启用。关闭则不启用创建热点功能。
AP热点名称	AP热点的SSID名称, 最大32个字符。
AP热点IP地址	AP热点的IP地址, 默认为192.168.1.1
掩码: 255 . 255 . 255 . 0	掩码地址, 默认为255.255.255.0。
AP地址池范围: 100 — 200	模块作为AP热点时, 模块可提供的IP地址分配范围。
<input type="button" value="确认"/>	

Station

WiFi

Station

Station

SSID

AP

SSID

32

AP

64

AP

WEP

WPA

WPA2

IP

IP

IP

IP

Station

IP

192.168.1.168

Station

255.255.255.0

Station

192.168.1.1

AP

WiFi

AP

AP

SSID

AP

SSID

32

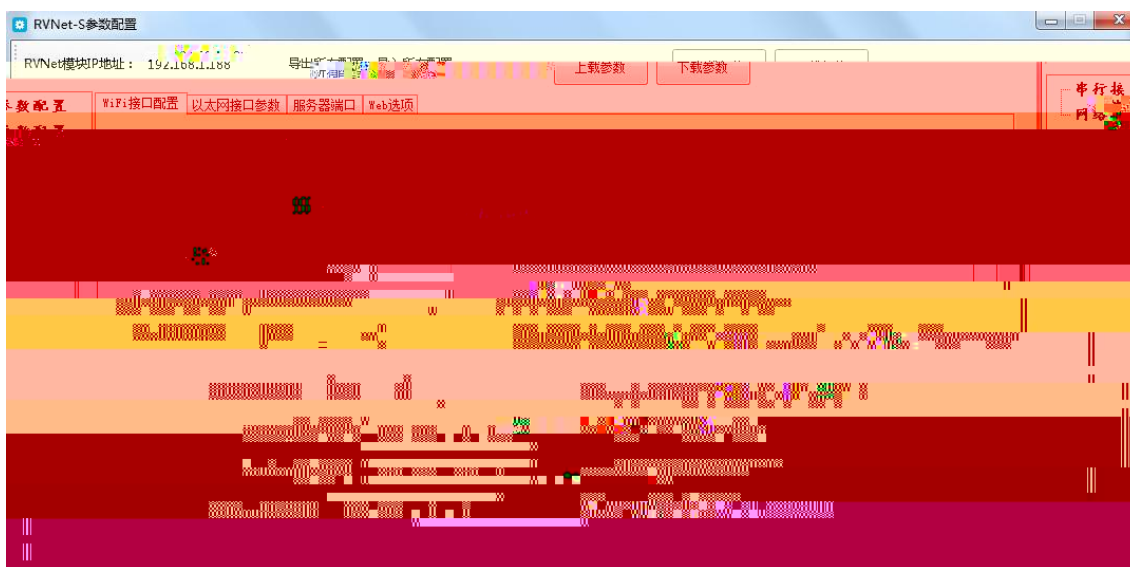
AP

64

TCP/IP—



2. “Station( )” “ AP ”



3. “ ” “ ”



4 “ ” “ ” “ ” “ ”  
 Station IP “ IP ” IP  
 Station DHCP IP “ IP ” IP



5 “ ”



1. AP AP NetDevice



2. Station IP IP (WiFi) (WiFi) PLC Station AP



NetDevice

>>"Station( )"

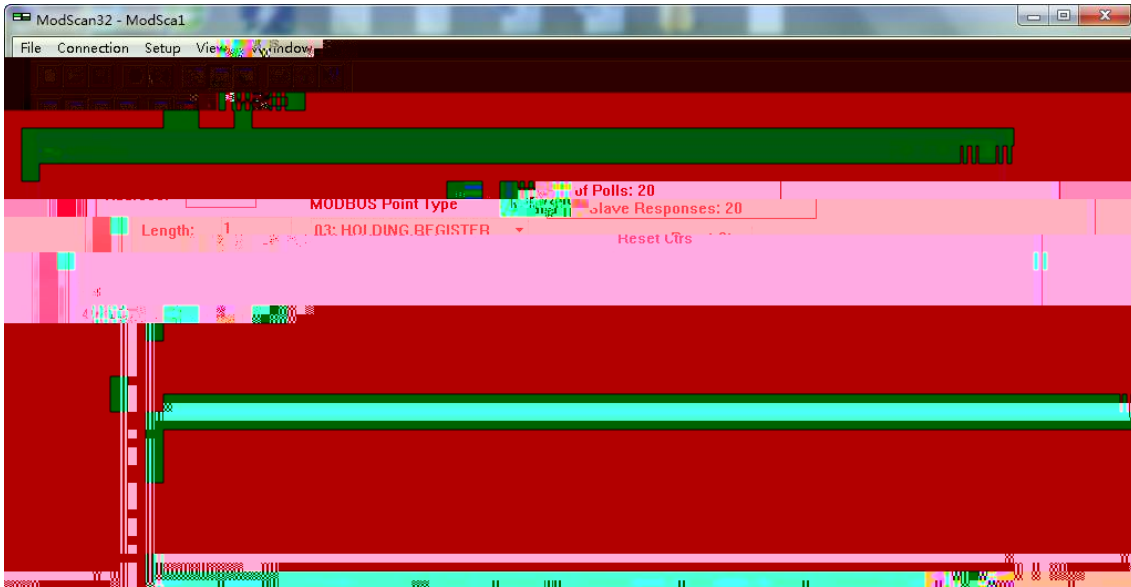
-OdNm( )" IP

Station

"192.168.1.168"

B) MODBUS TCP

RVNet-MB-S COM1



C)

“5.SCADA ”

IP

Station

IP

RVNet-MB-S

AP

WiFi

Station

PLC

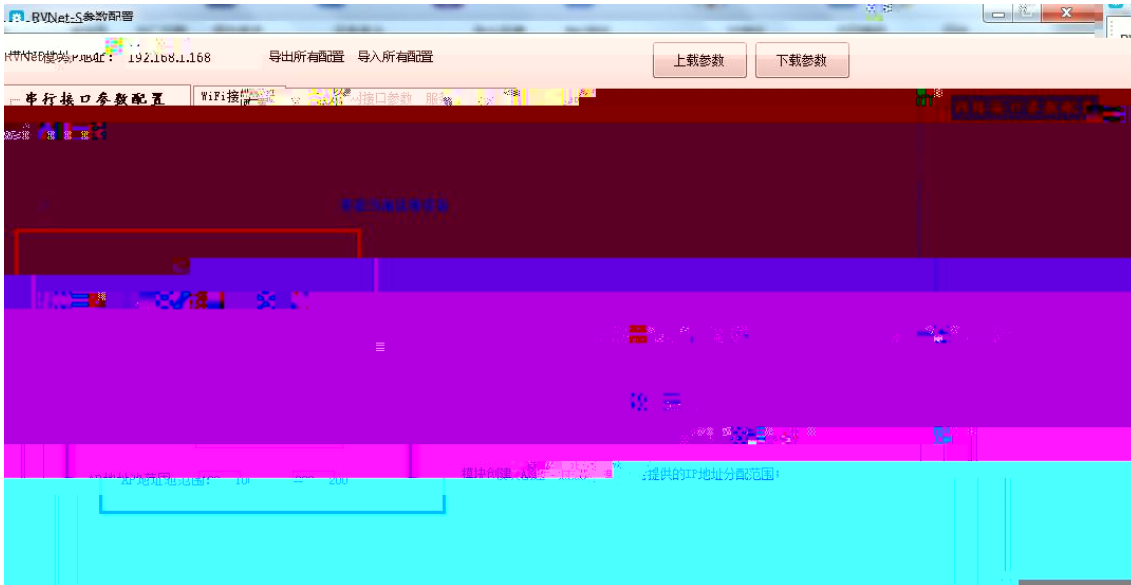
1. NetDevice



2 “AP( )” “ AP ”



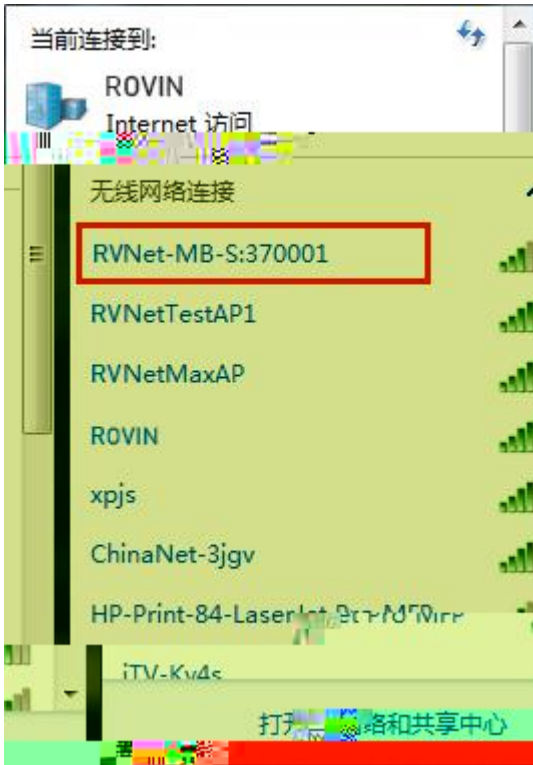
2 AP



- A “ ” “RVNet-MB-S:XXXXXX” “XXXXXX”
- B “ ” “12345678” 8
- C “ ” WEP WPA WPA2 WAP2
- D “AP IP ” AP IP 192.168.3.1 255.255.255.0
- E “AP ” DHCP 100—200



1. “RVNet-MB-S:XXXXXX”

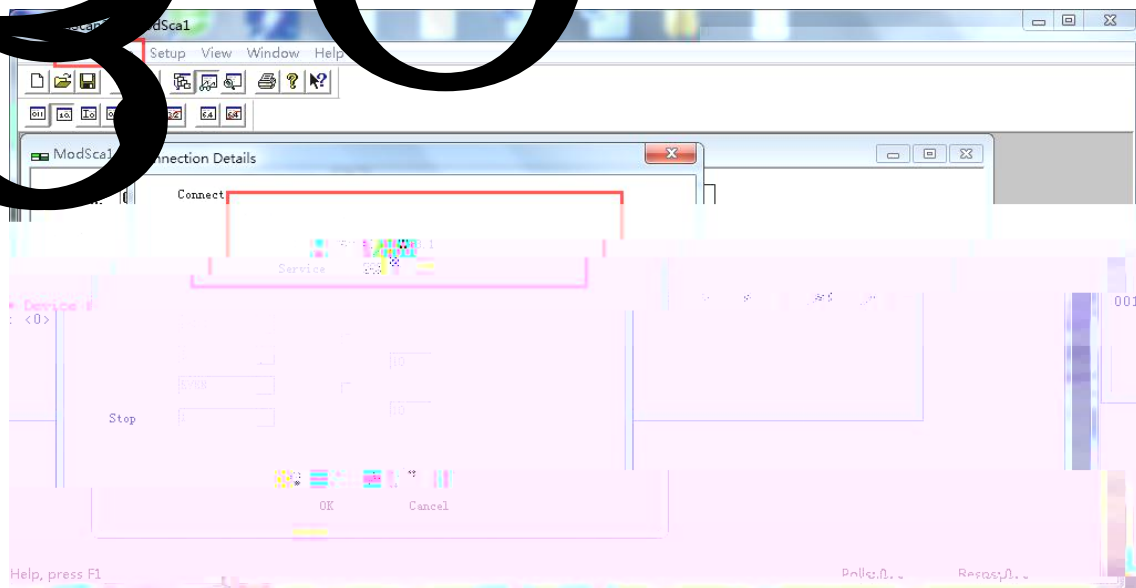
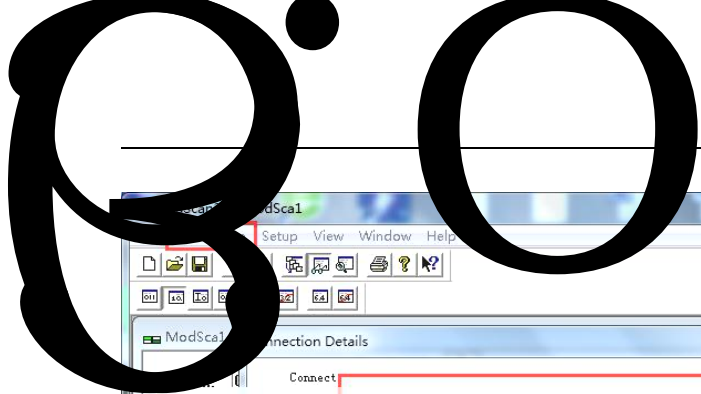


2 "RVNet-MB-S:XXXXXX" RVNet  
 192.168.3.100 IP IP 192.168.3.1

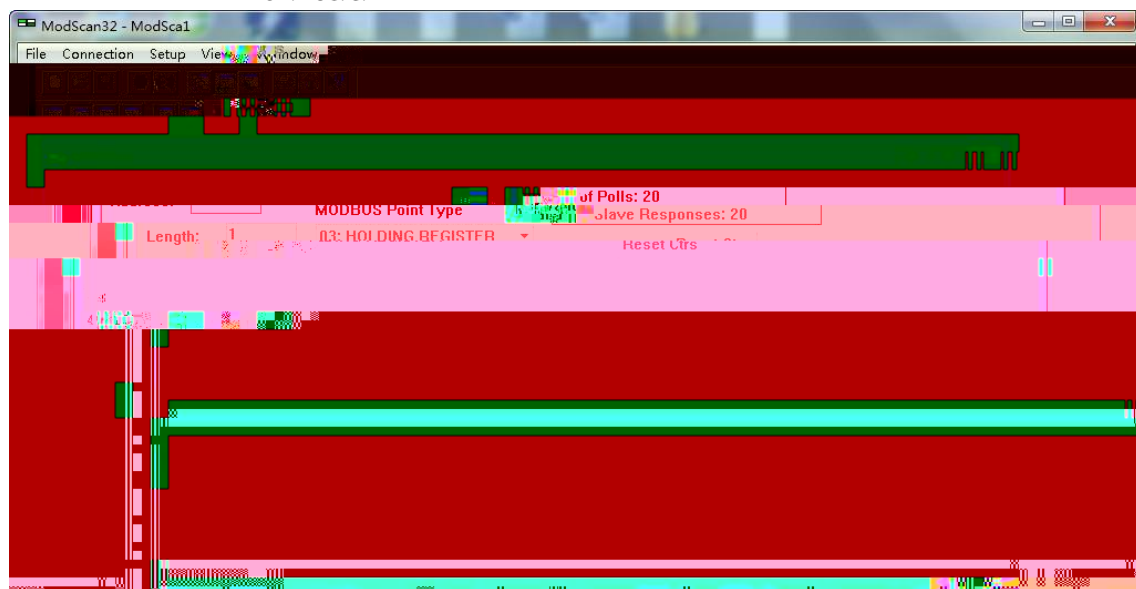


3 IP PING  
 ping 192.168.3.1 RVNet-MB-S

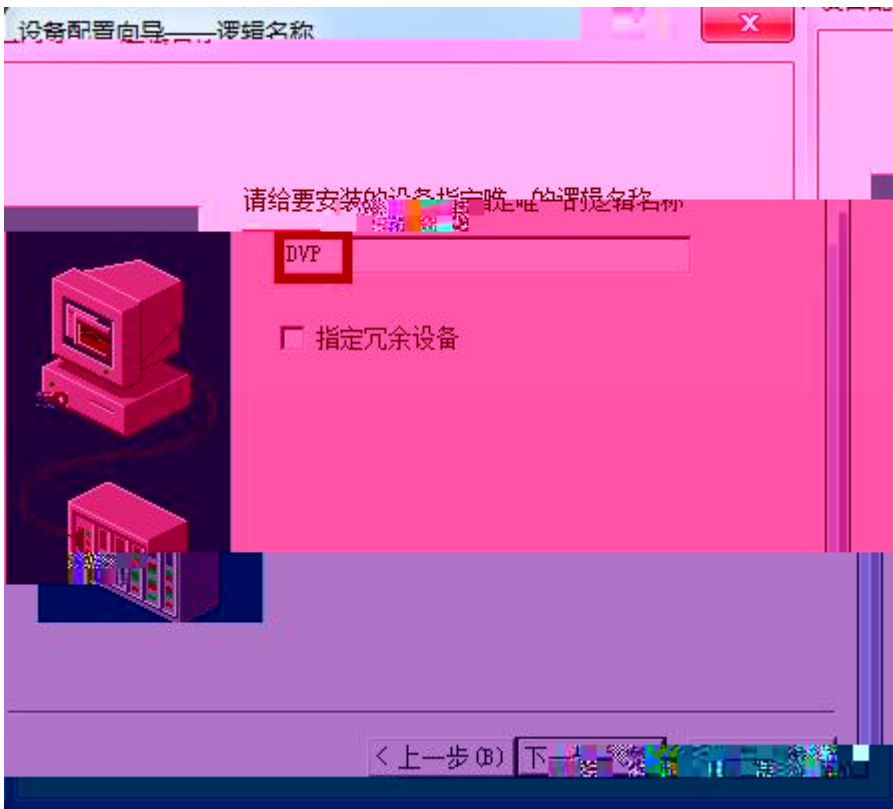
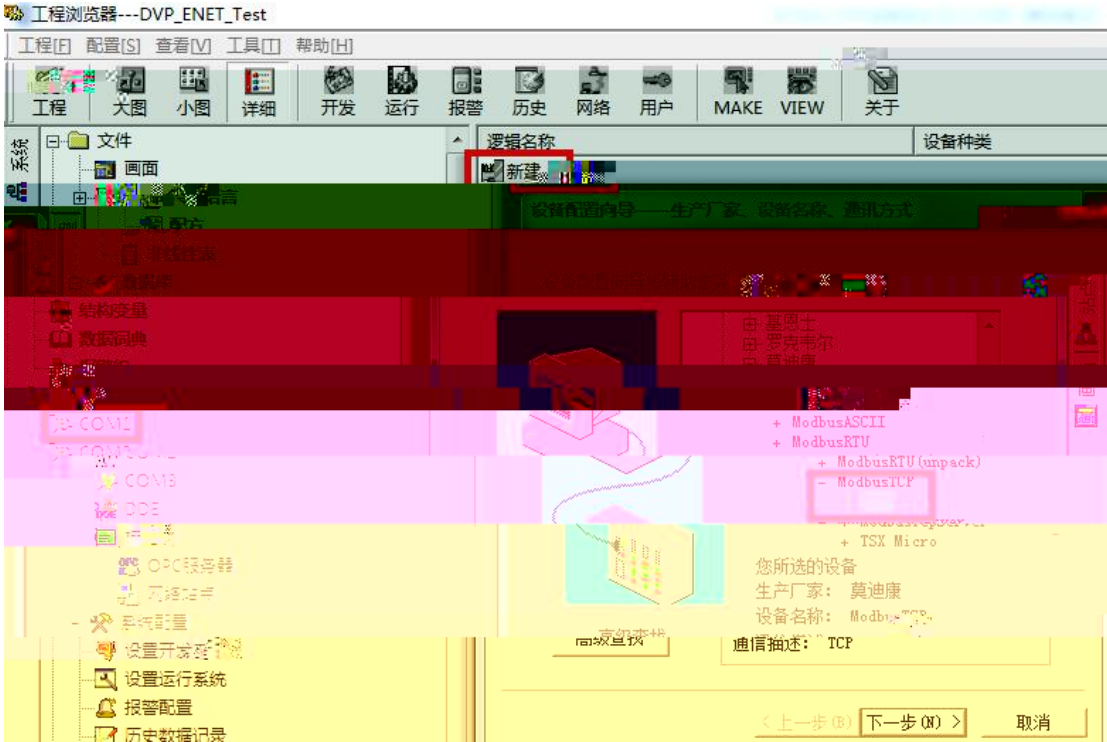




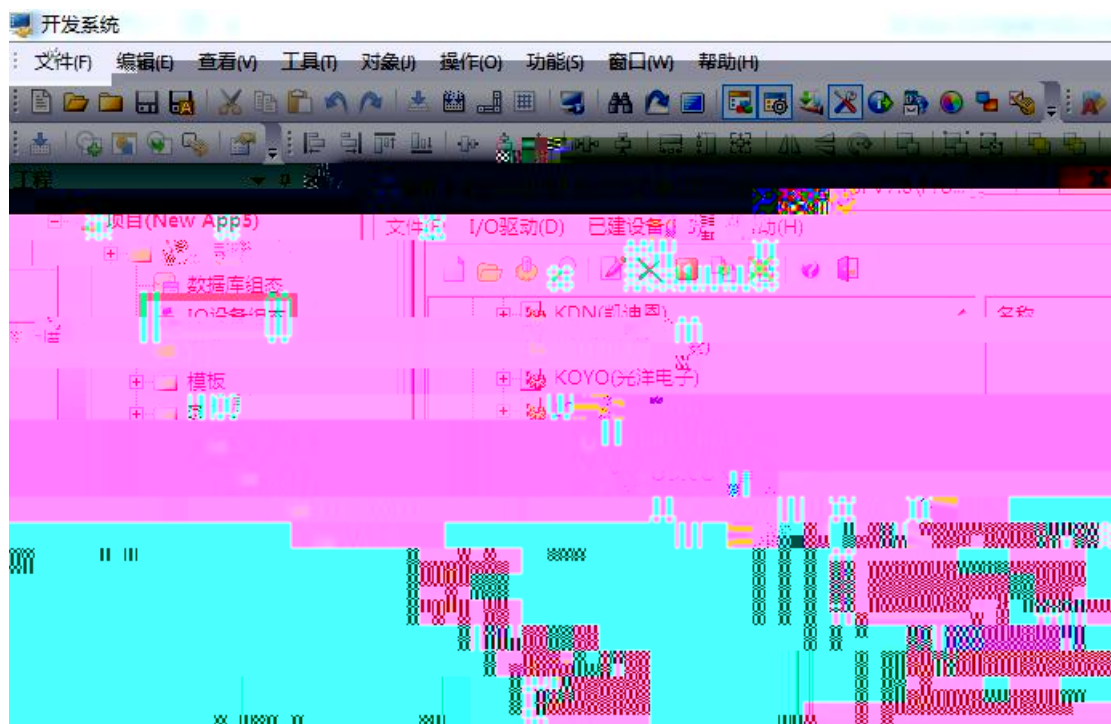
IP 192.168.3.1 AP IP

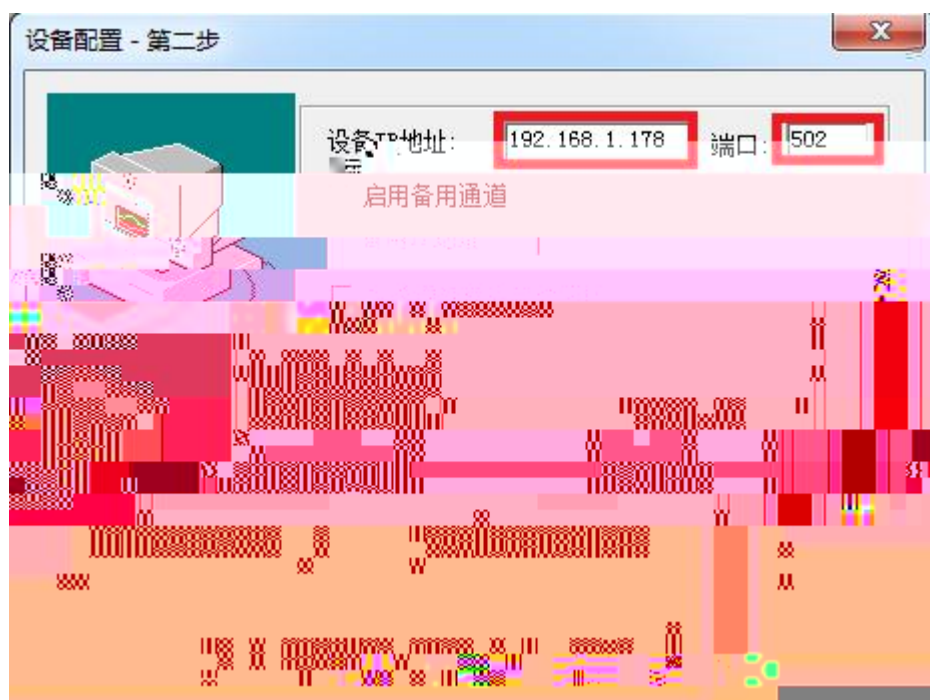


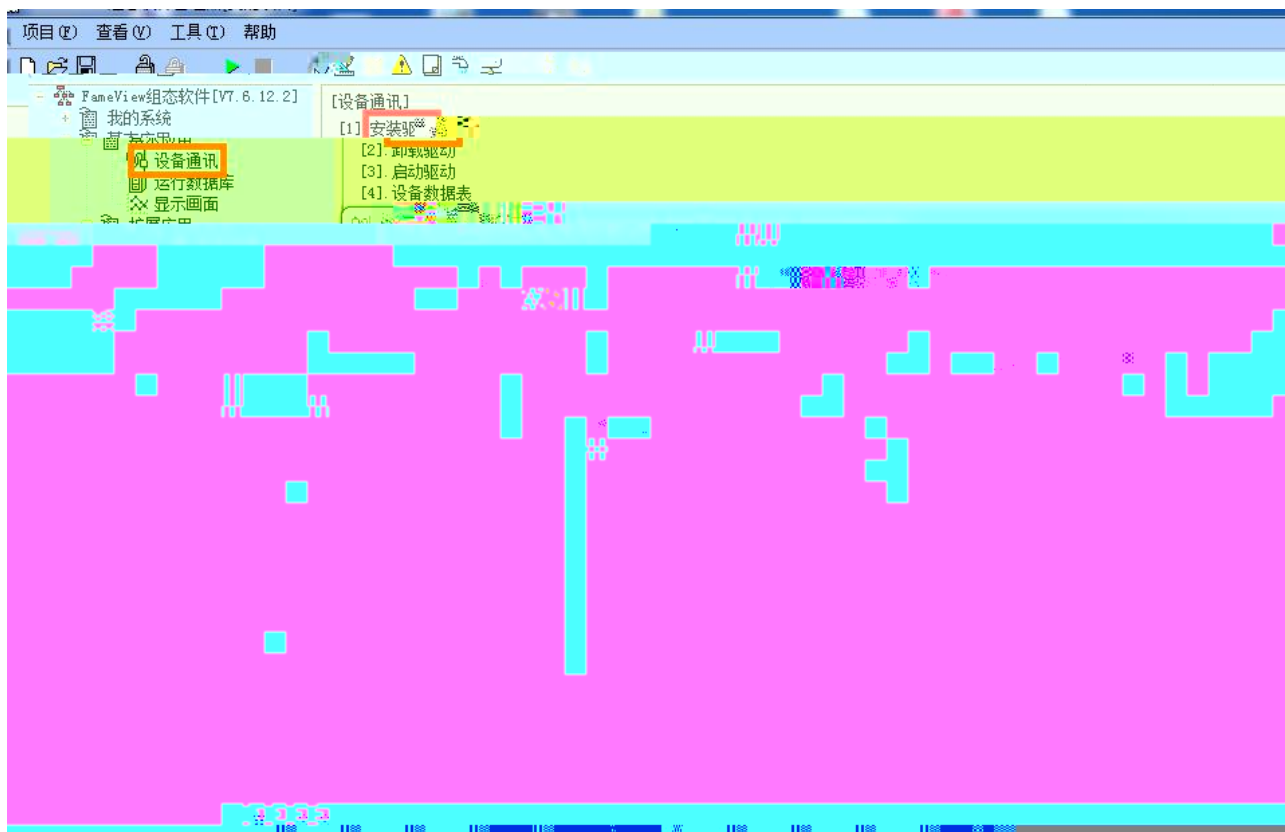
C

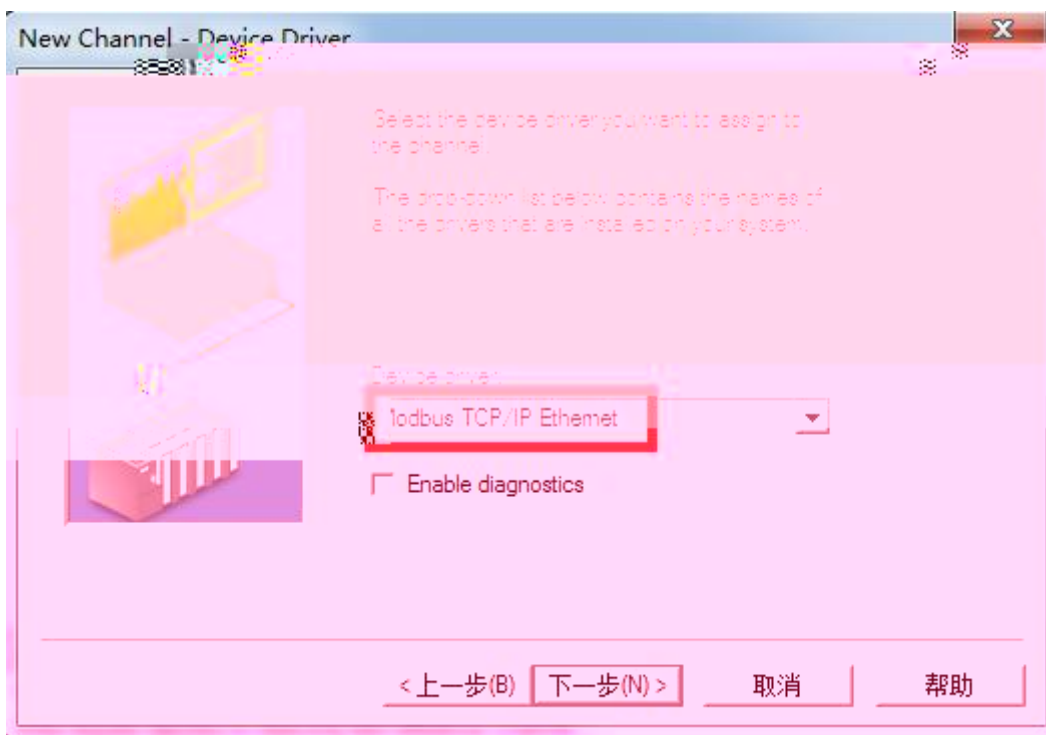
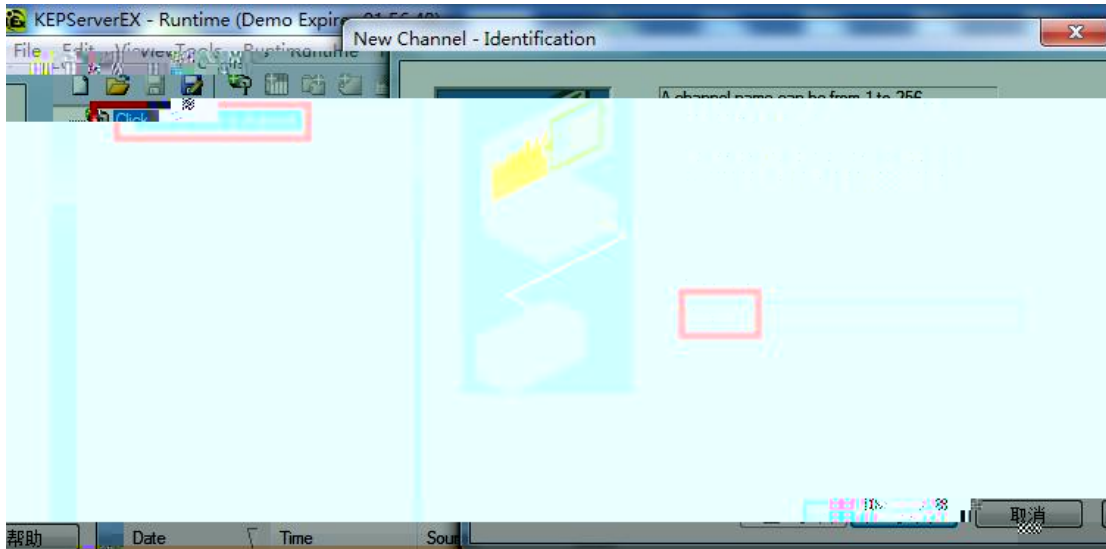


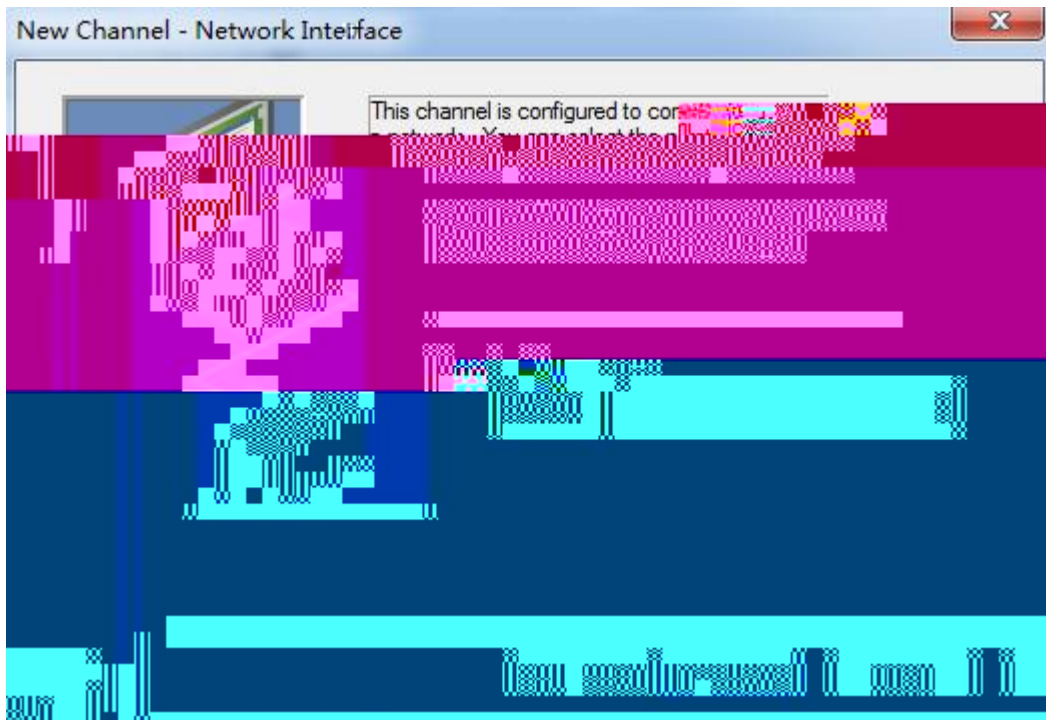




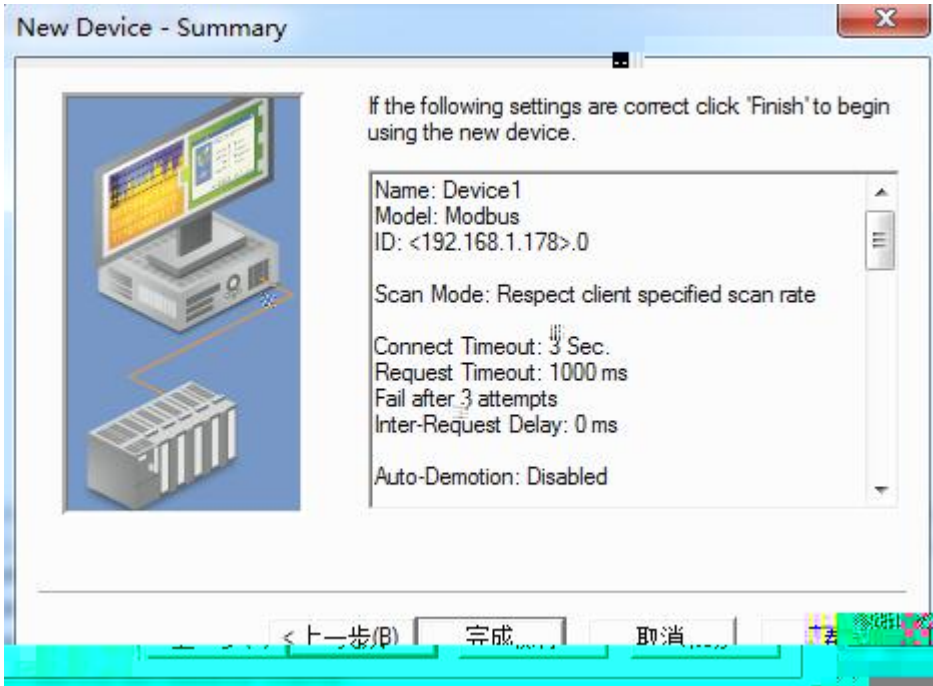




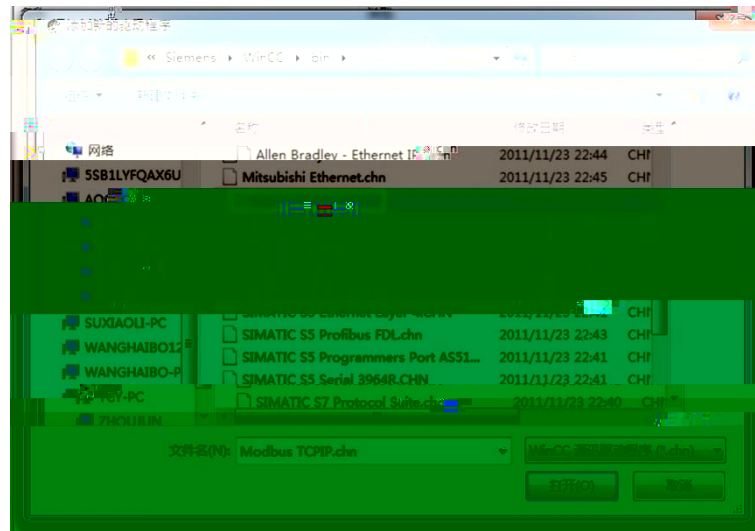








1. WinCC  
“Modbus TCP/IP.chn”



2. “Modbus TCP/IP/IP #1” “ ” “ ”  
CPU 984 “ ” RVNet-MB-S IP 502  
Modbus



## 6.

RVNet-MB-S

Modbus

Pwr Com1 Com2 WiFi

Link/Active

RJ45

10/100Mbps

ModbusTCP ModbusUDP

TCP 32

WiFi 802.11 b/g/n 2.4G-2.5G

+26dBm(MAX,2.4G 802.11b/g/n)

-89dBm(802.11b) -74dBm(802.11g) -72dBm(802.11n)

Station/AP

WPA-PSK/WPA2-PSK/WEP

ModbusTCP ModbusUDP

TCP

32

X1

7.

2766

250101

0531-88689022

0531-88689022

88

266107

0532-68894021 83029299

0532-83029299

18753243991 [garywei@dingtalk.com](mailto:garywei@dingtalk.com)

[www.qiyuanauto.cn](http://www.qiyuanauto.cn)

