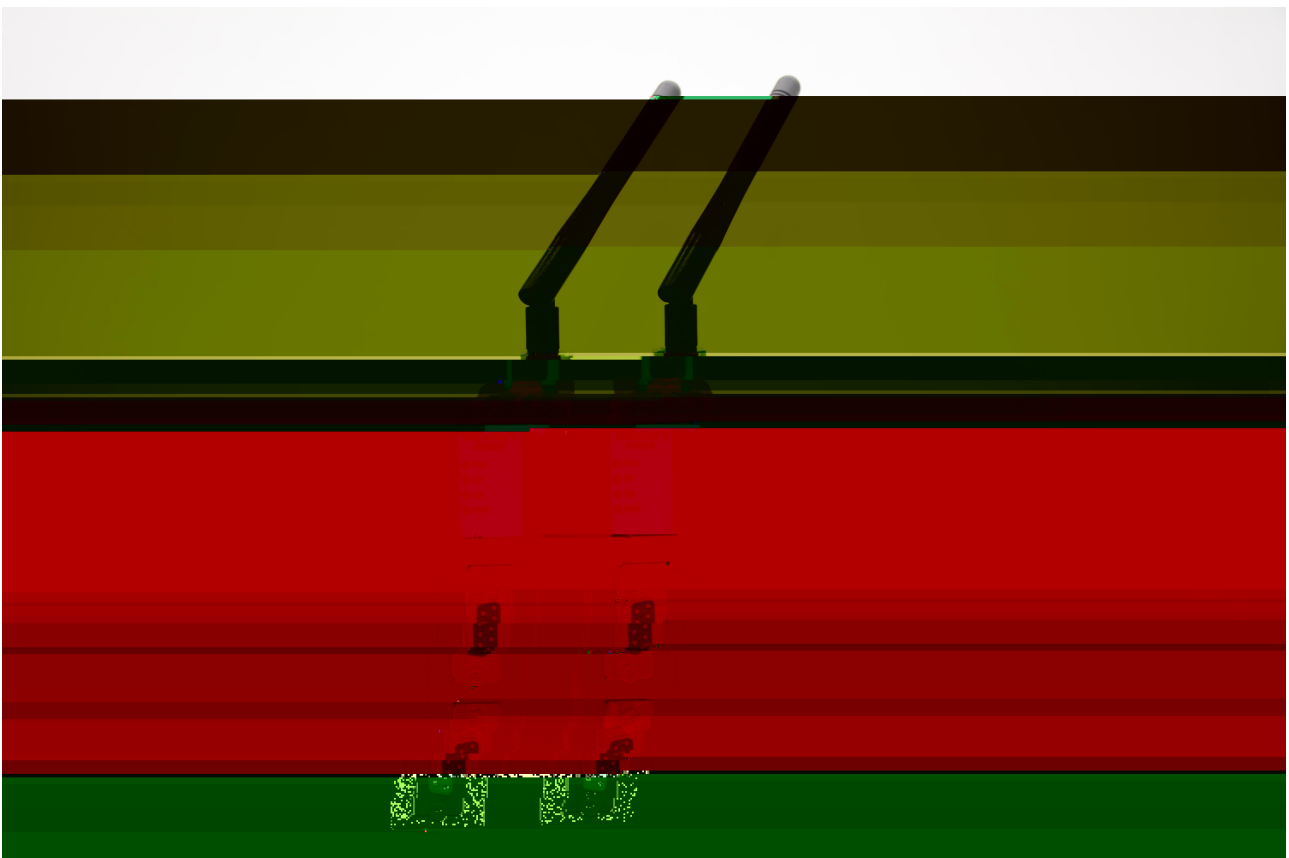


---

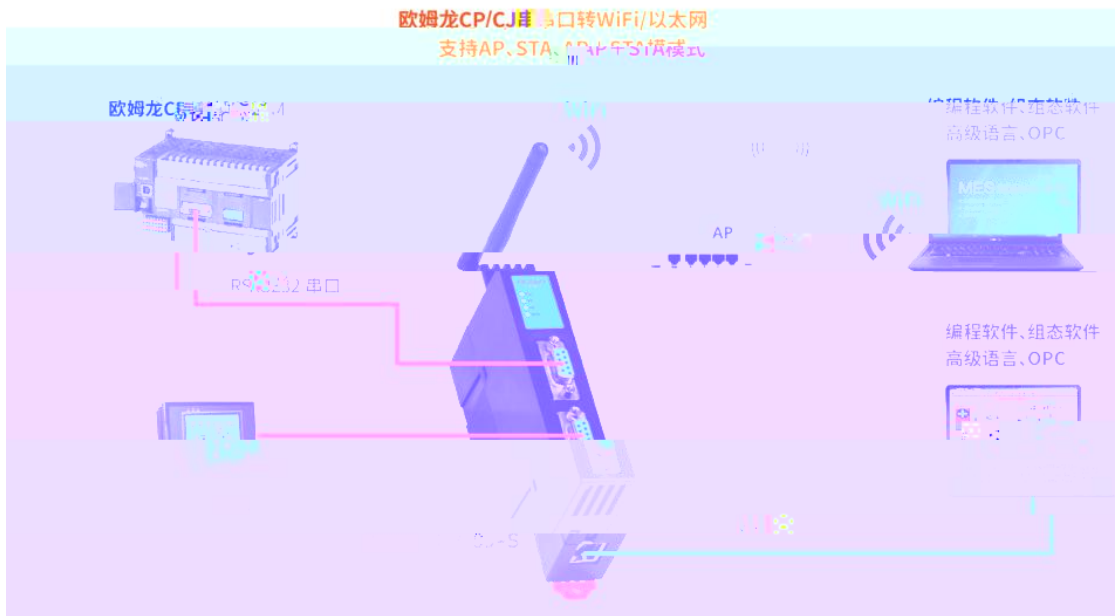
**ROUIN**

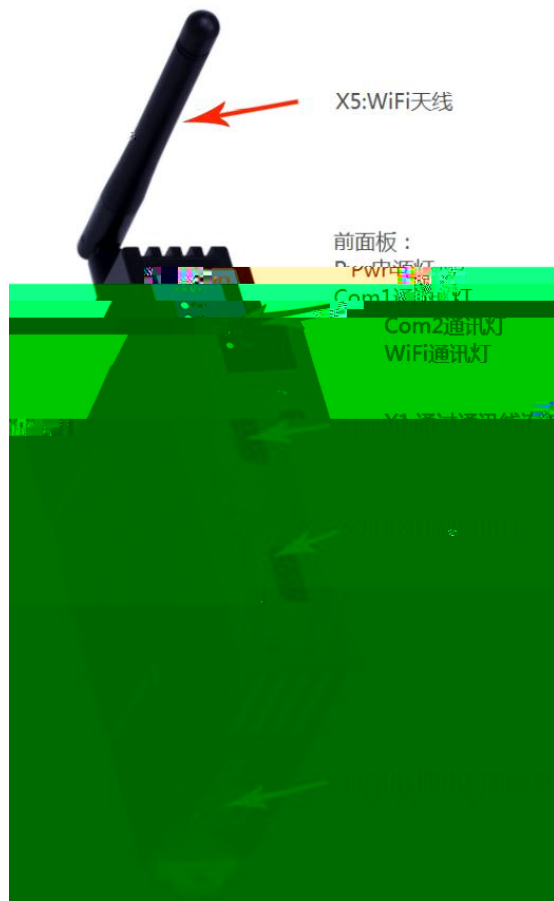
CP/CJ      PLC

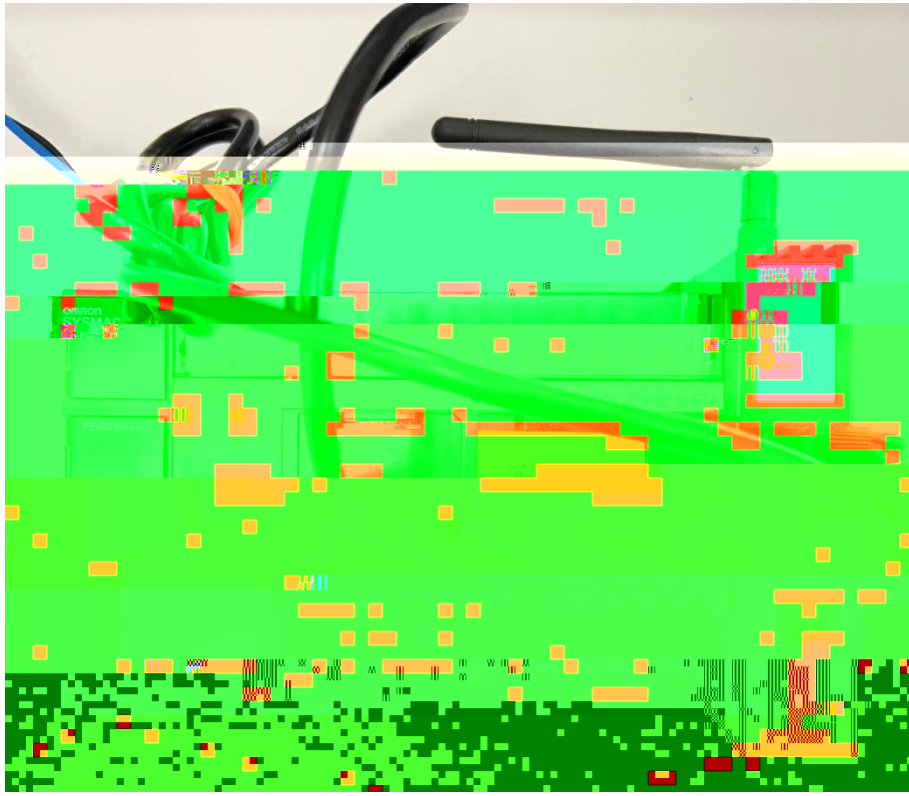




欧姆龙CP/CJ系列串口转WiFi/以太网  
支持AP、STA、AP+STA模式







---

---

---

---

---

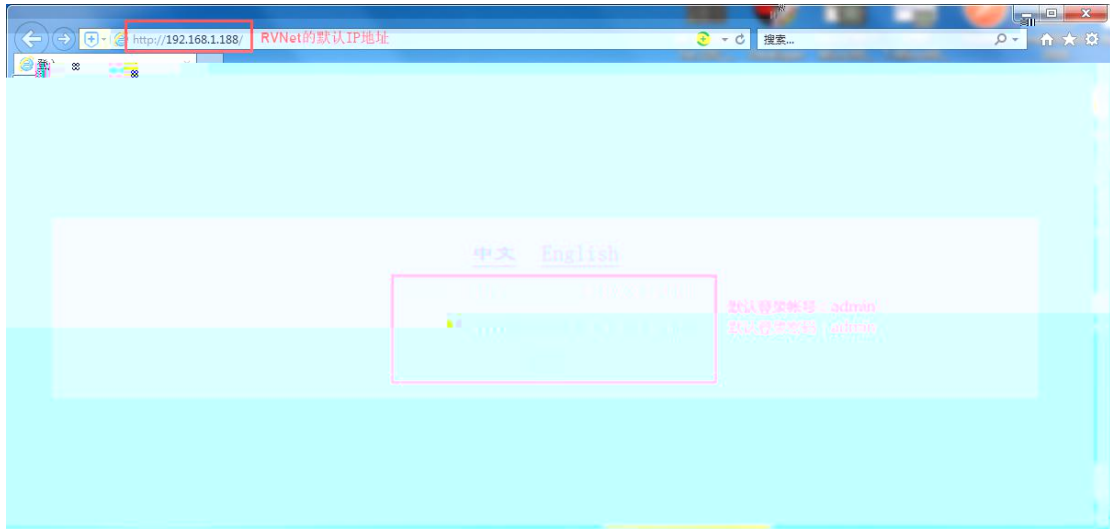

---

1

---

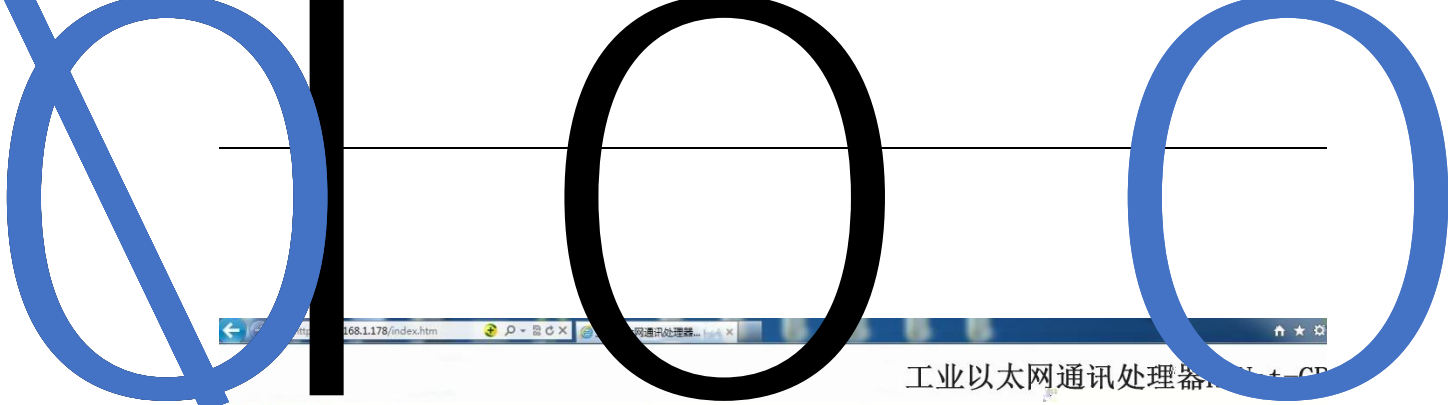
---

|



#### WiFi接口参数和状态:

Station(模块连接热点)——>状态	成功连接热点	AP(模块做为热点)——>状态	创建热点成功
SSID名称	RVNetMaxAP	SSID名称	RVNet-CP/CJ-S:350044
加密方式	WPA2	加密方式	WPA2
DHCP状态	获取成功	IP地址	192.168.3.1
IP地址	192.168.1.167	子网掩码	255.255.255.0
子网掩码	255.255.255.0		



168.1.178/index.htm

### 工业以太网通讯处理器

支持PLC串行通信参数自适应,也可关闭后手动选择PLC(COM1)的通讯波特率、数据位、校验位和停止位。

支持HMI串行通信参数自适应,也可关闭后手动选择HMI(COM2)的通讯波特率、数据位、校验位和停止位。

RVNet-CP

设置	描述
PLC串行通信参数自适应 <input type="checkbox"/>	支持PLC串行通信参数自适应,也可关闭后手动选择PLC(COM1)的通讯波特率、数据位、校验位和停止位。
HMI串行通信参数自适应 <input type="checkbox"/>	支持HMI串行通信参数自适应,也可关闭后手动选择HMI(COM2)的通讯波特率、数据位、校验位和停止位。

数据位 [8bit] COM1数据位选择, 可选7位或8位校验位。

校验位 [Even] COM1校验位选择, 可选偶校验、奇校验和无校验。

停止位 [2bit] COM1停止位选择, 可选一位或两位停止位。



---

---

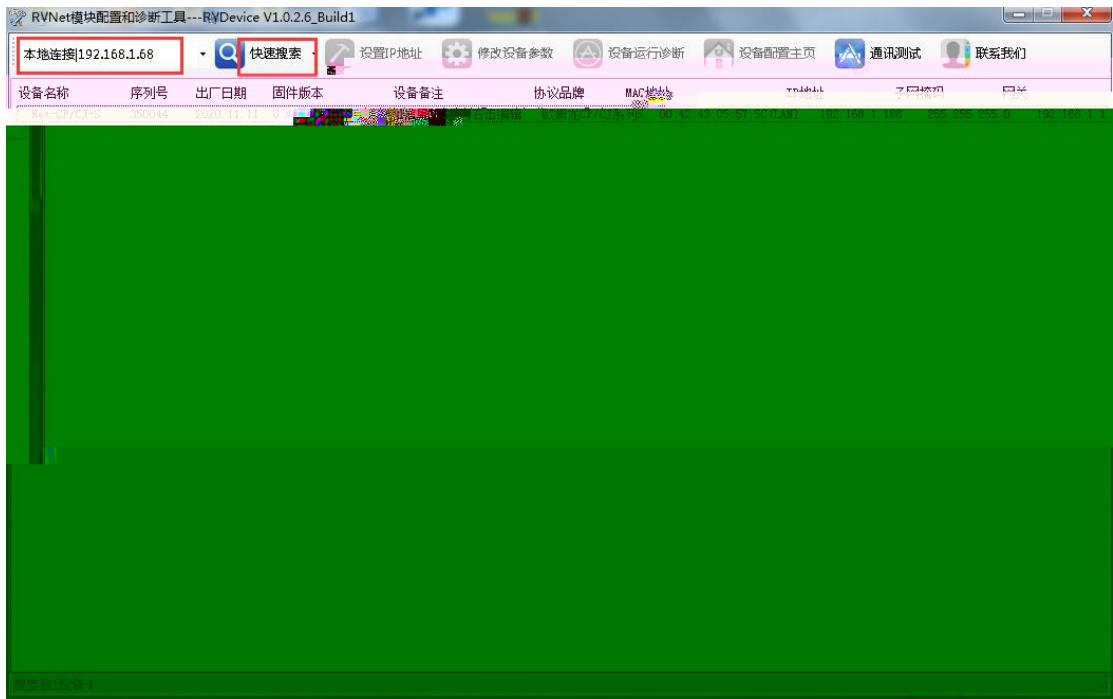
|

---

---

|

0  
1  
2  
3  
4  
5  
6  
7  
8  
9

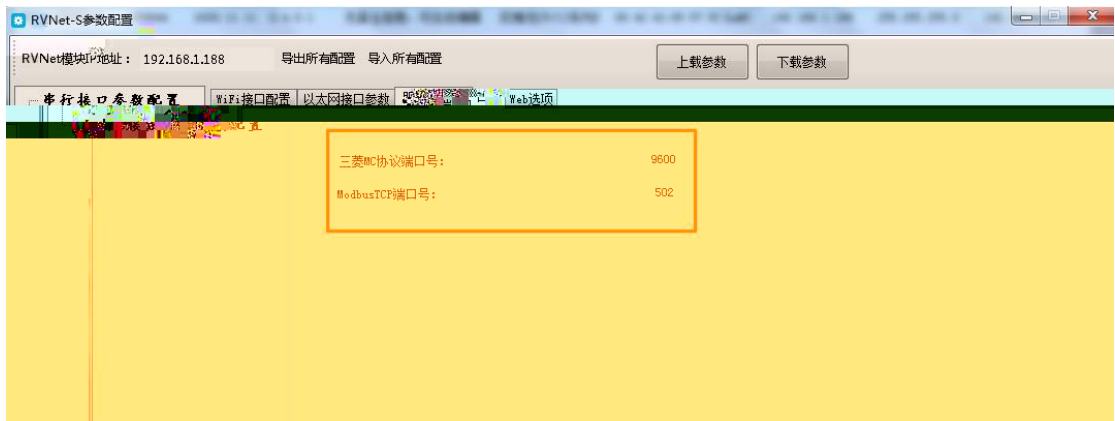
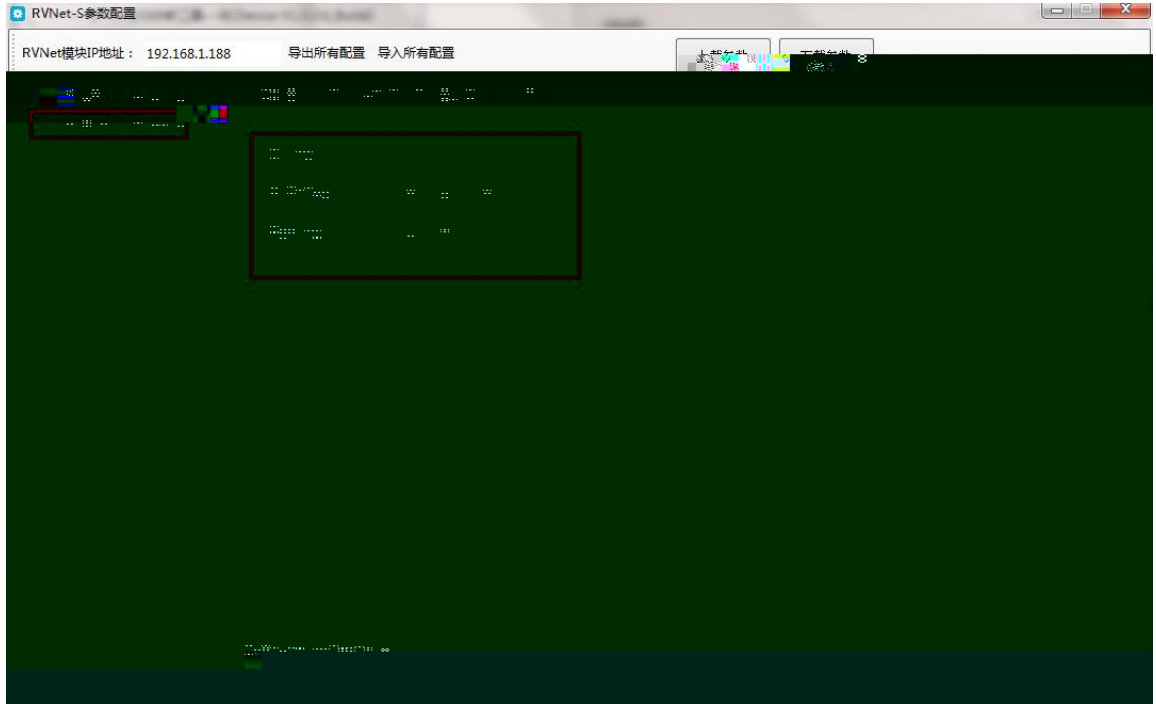


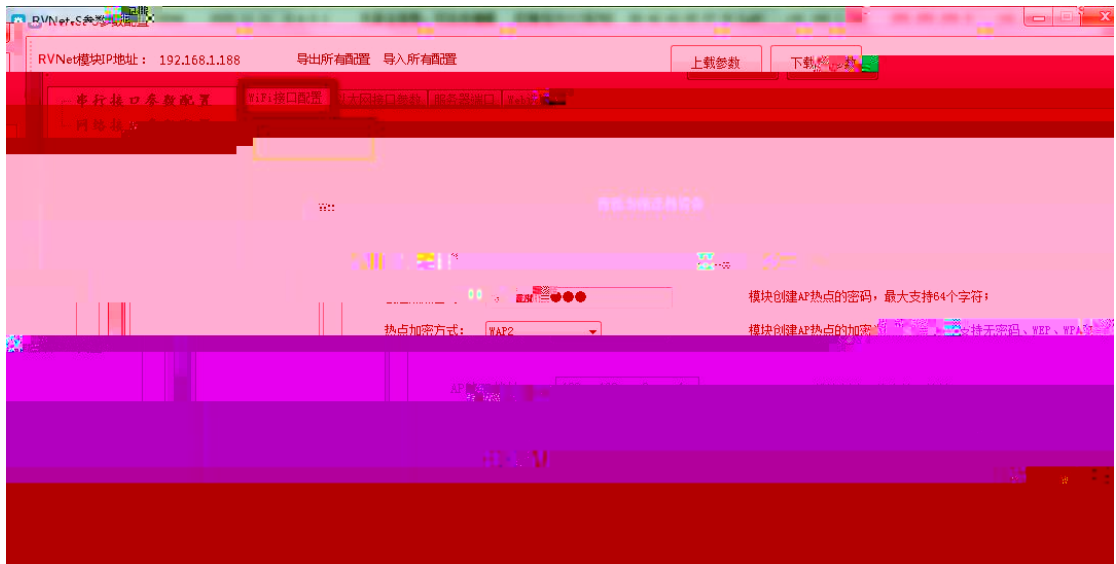
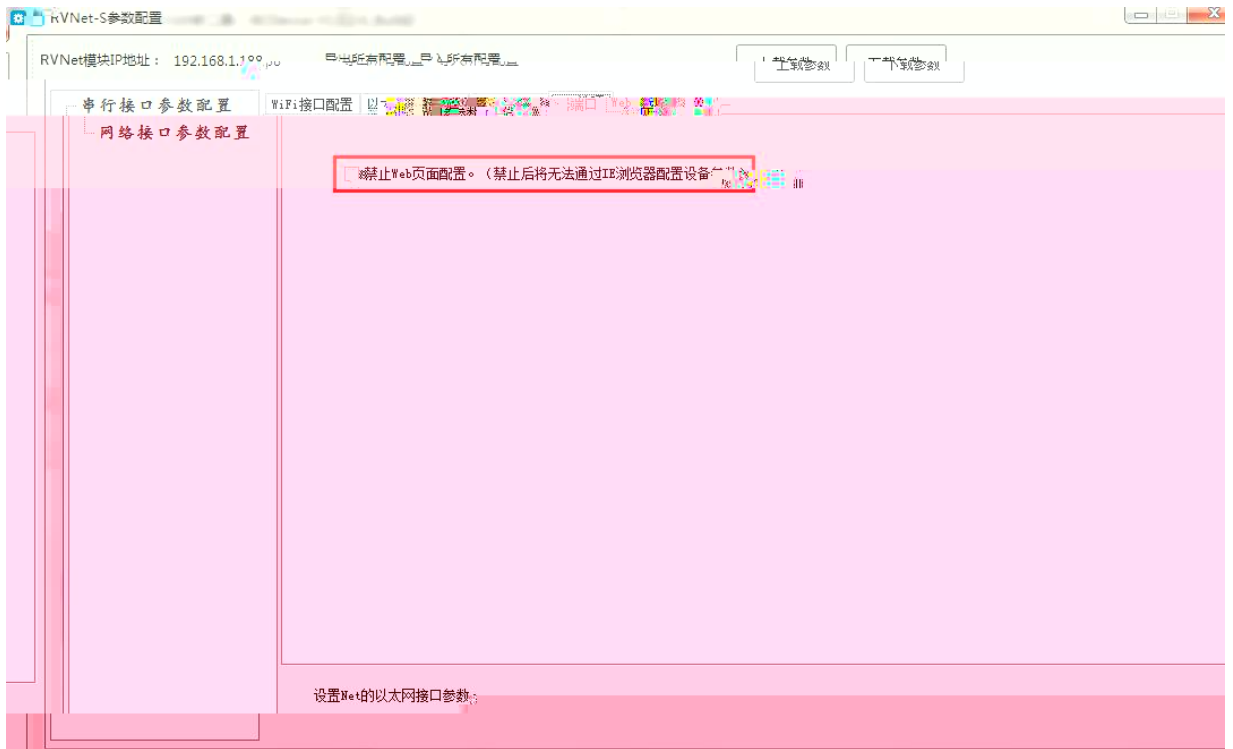
[Redacted]

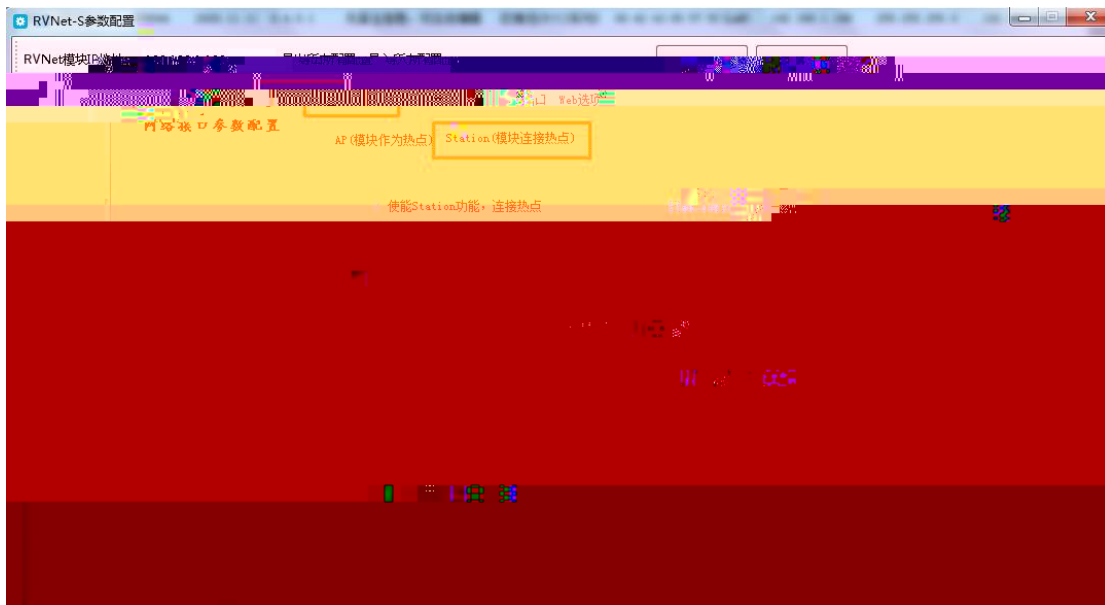
[Redacted]

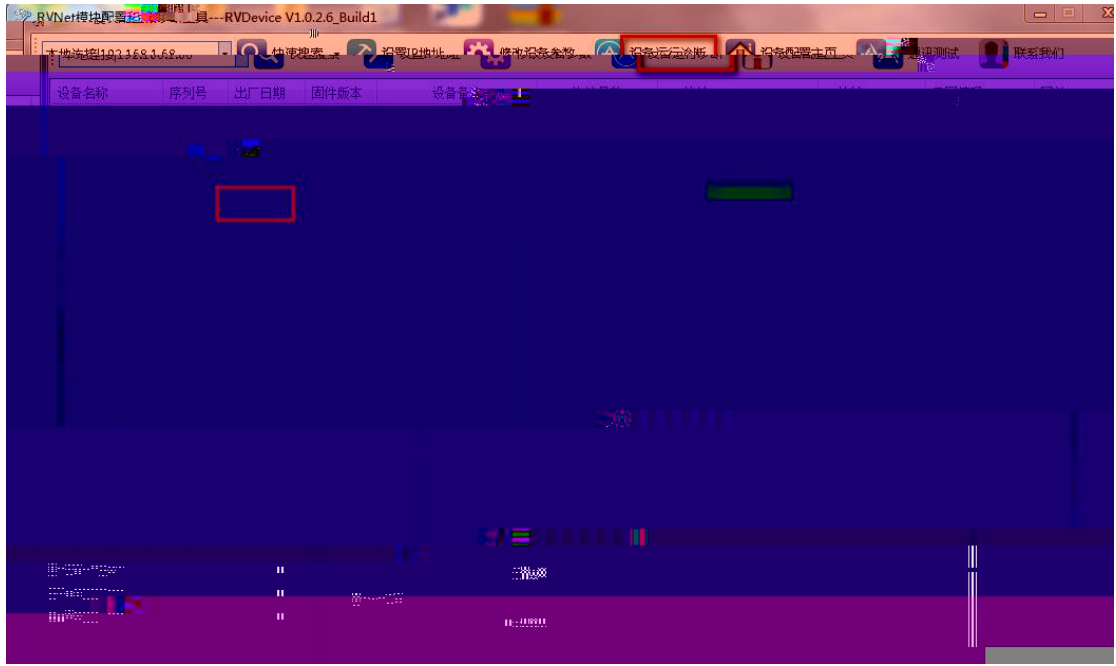


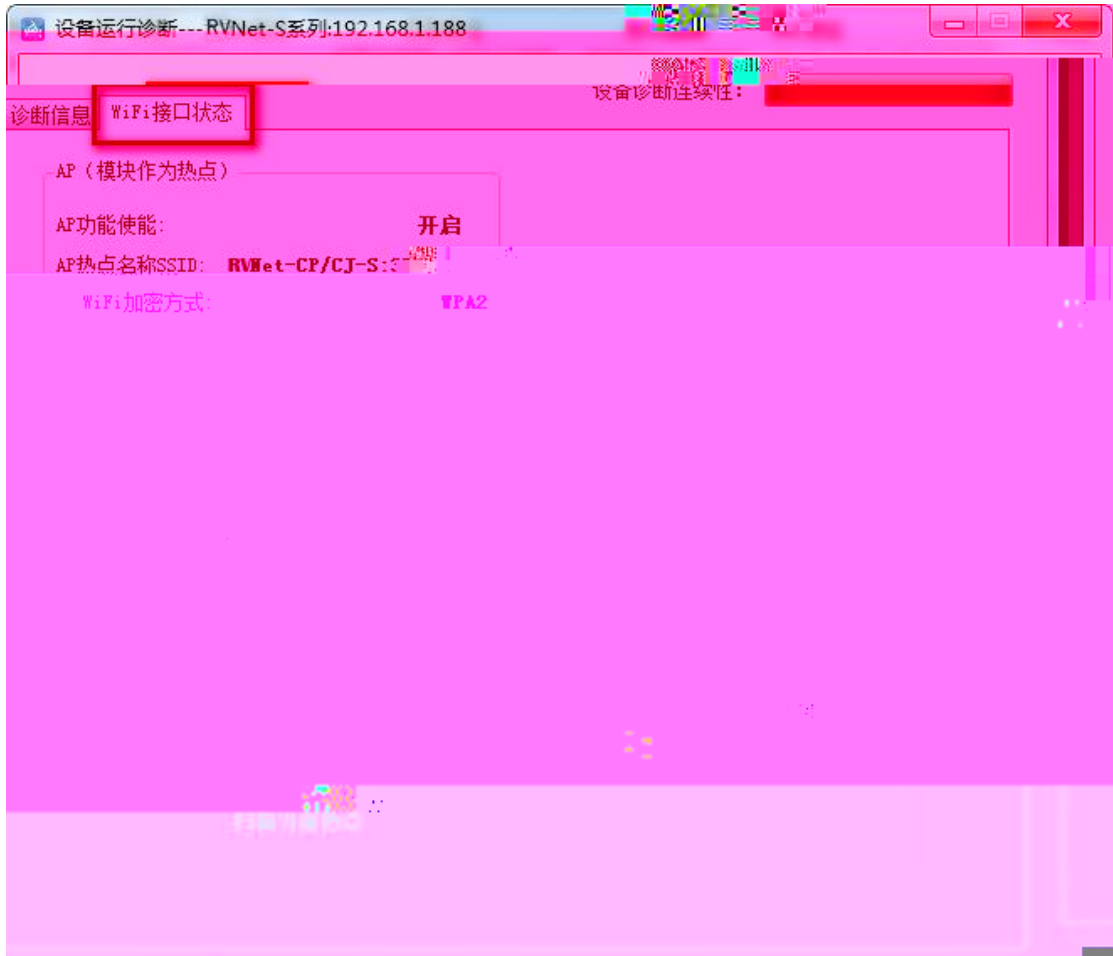




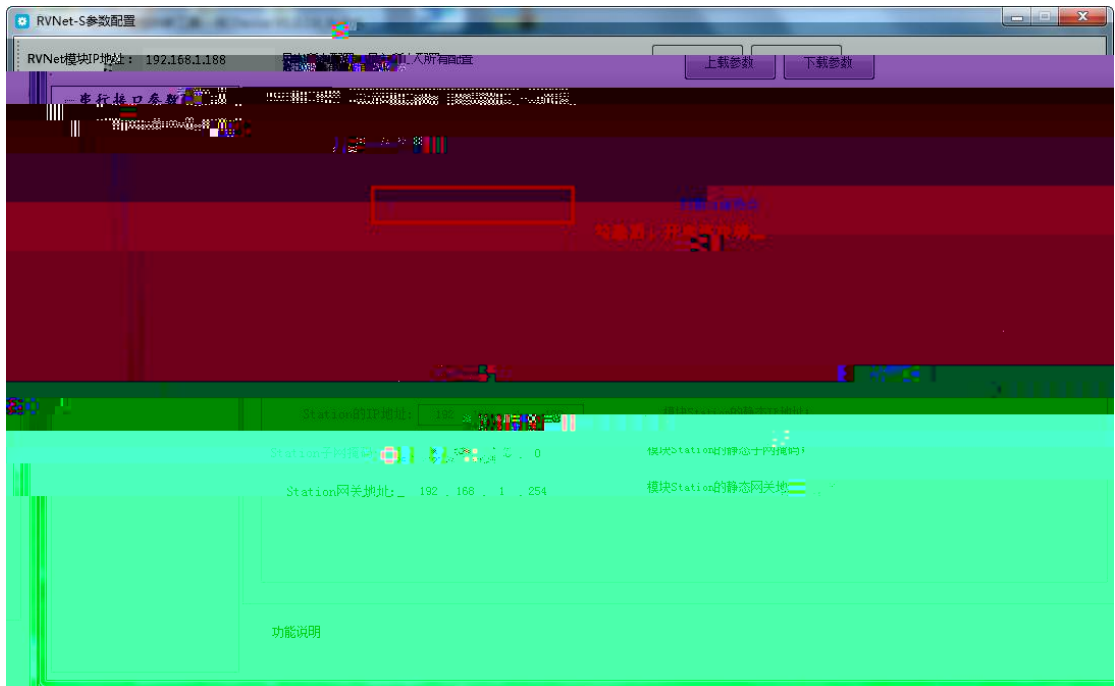


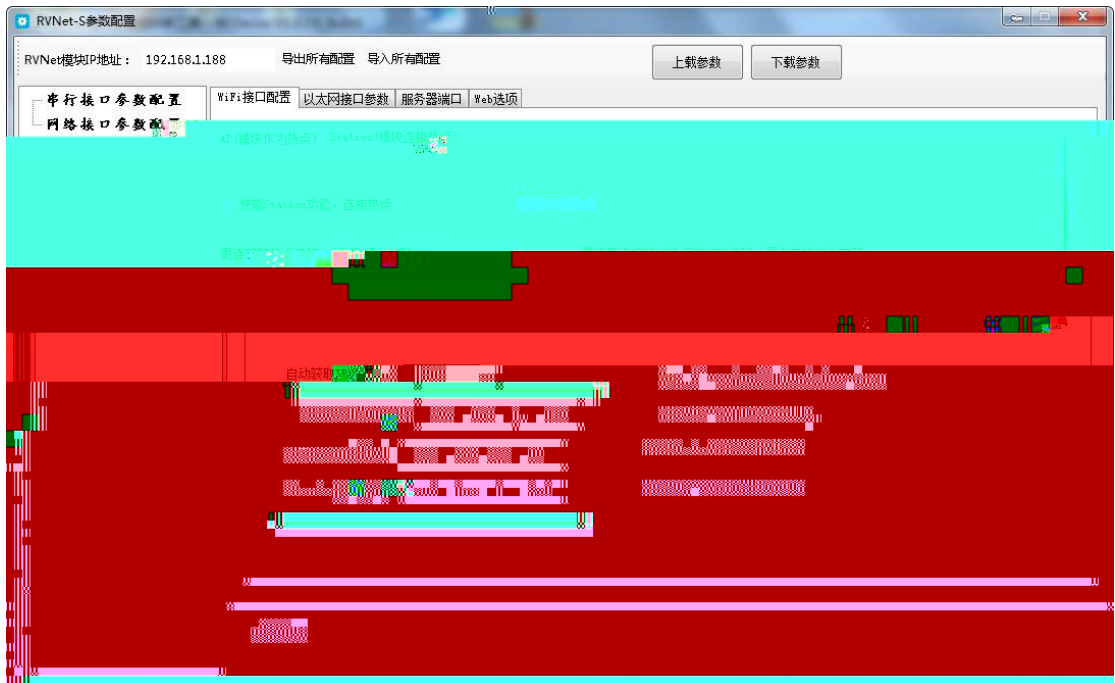
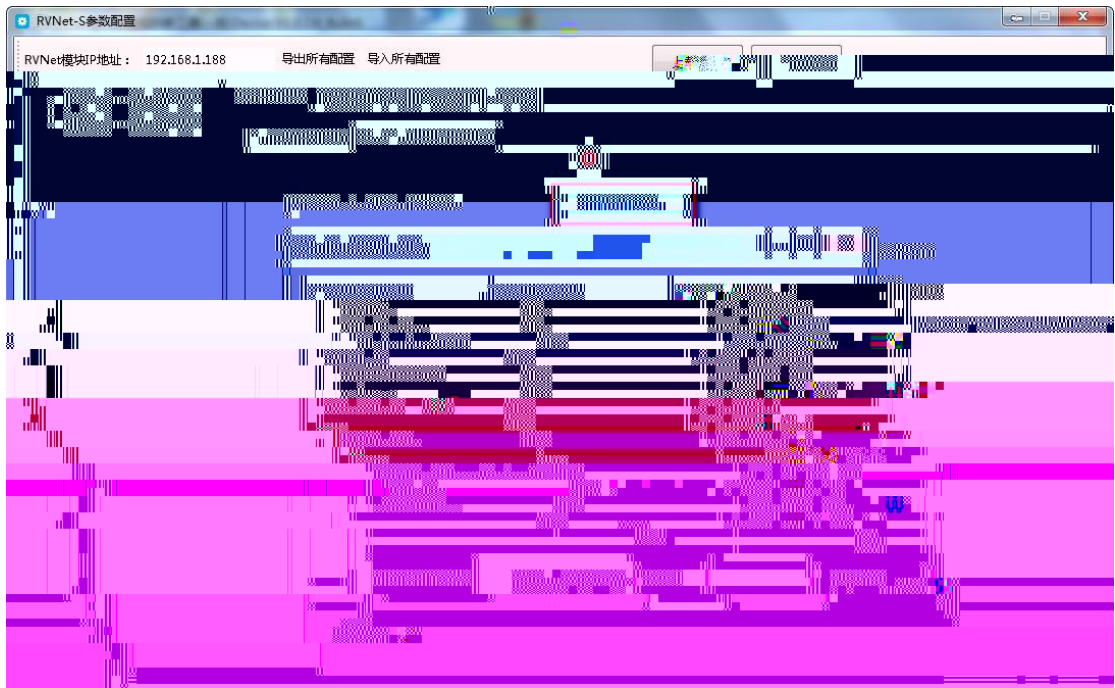


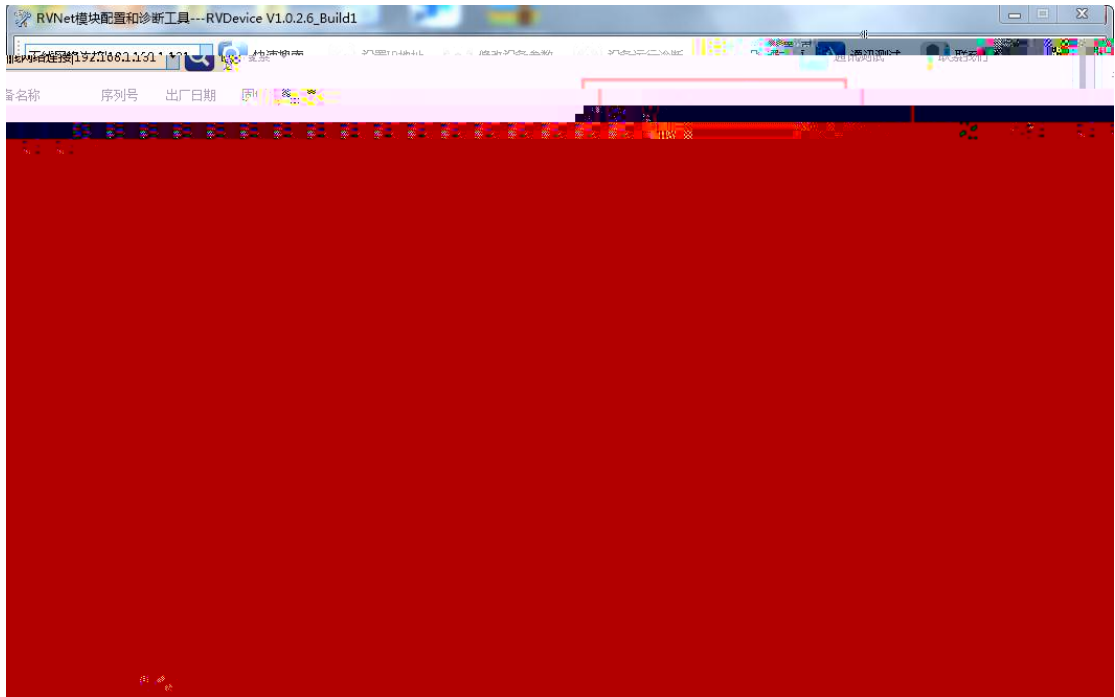
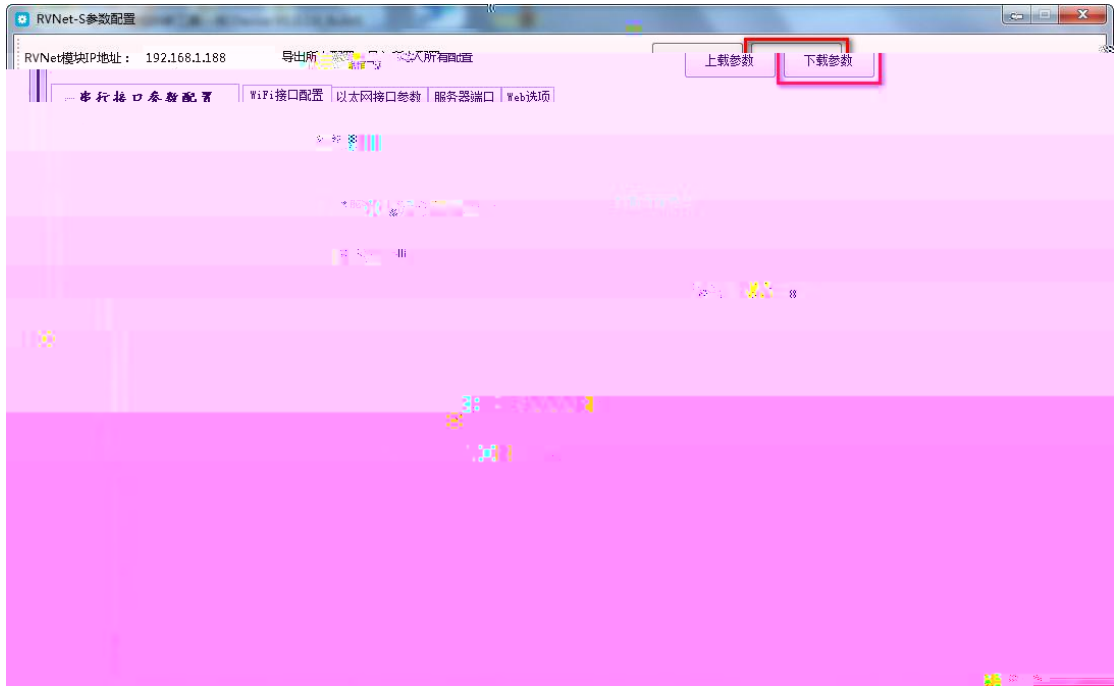


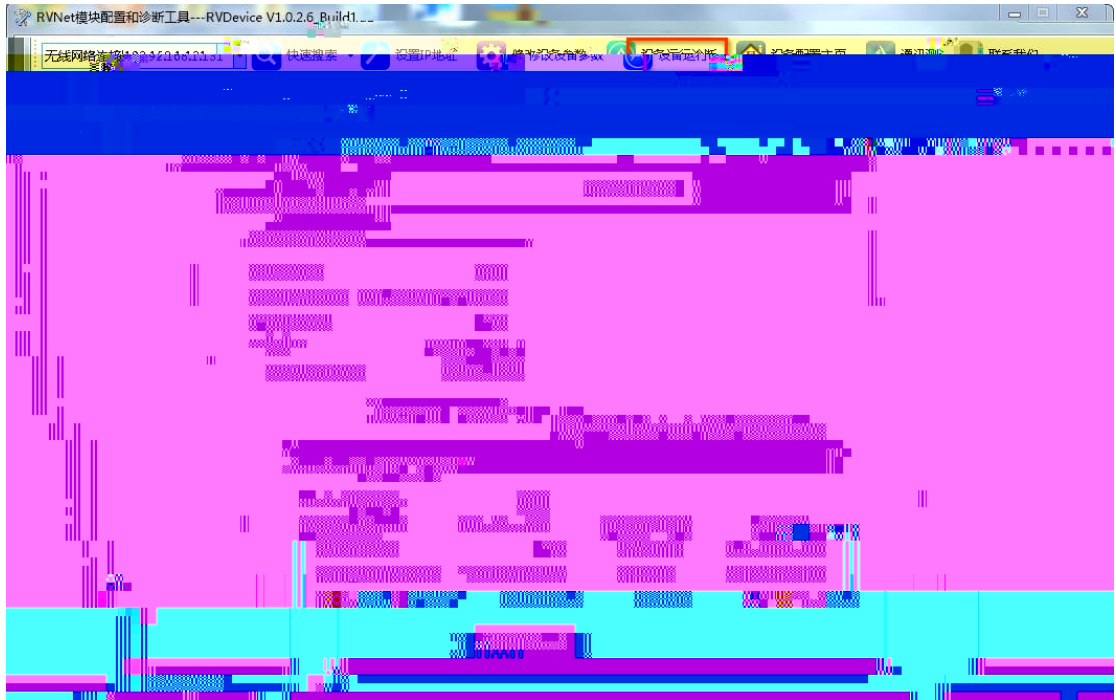
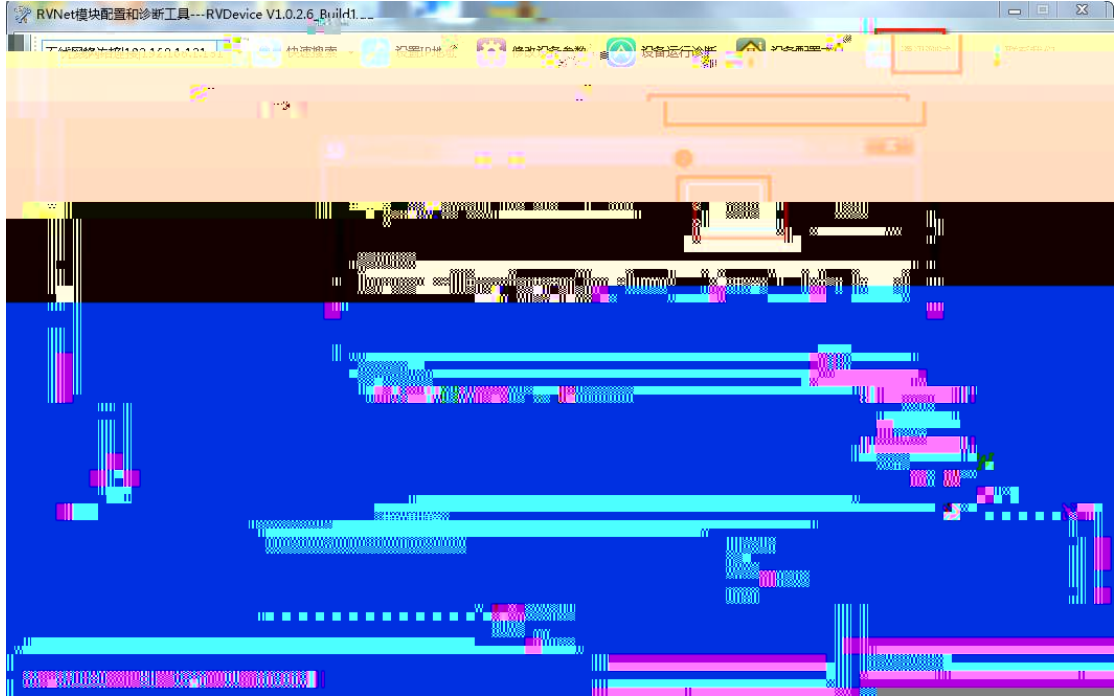


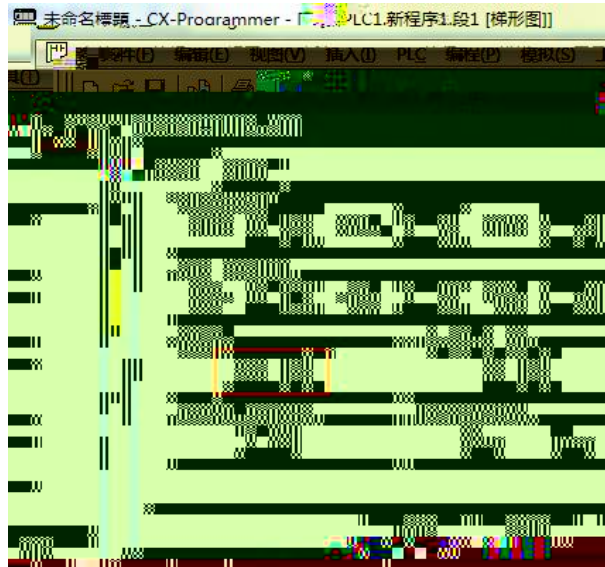


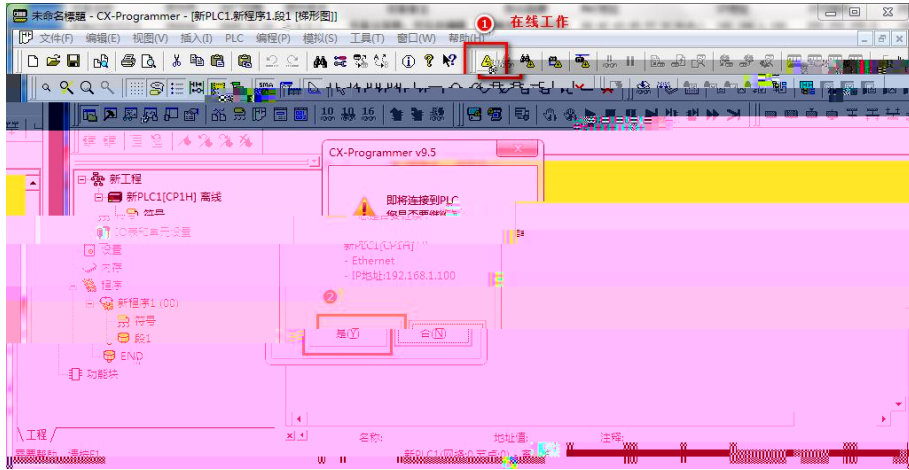






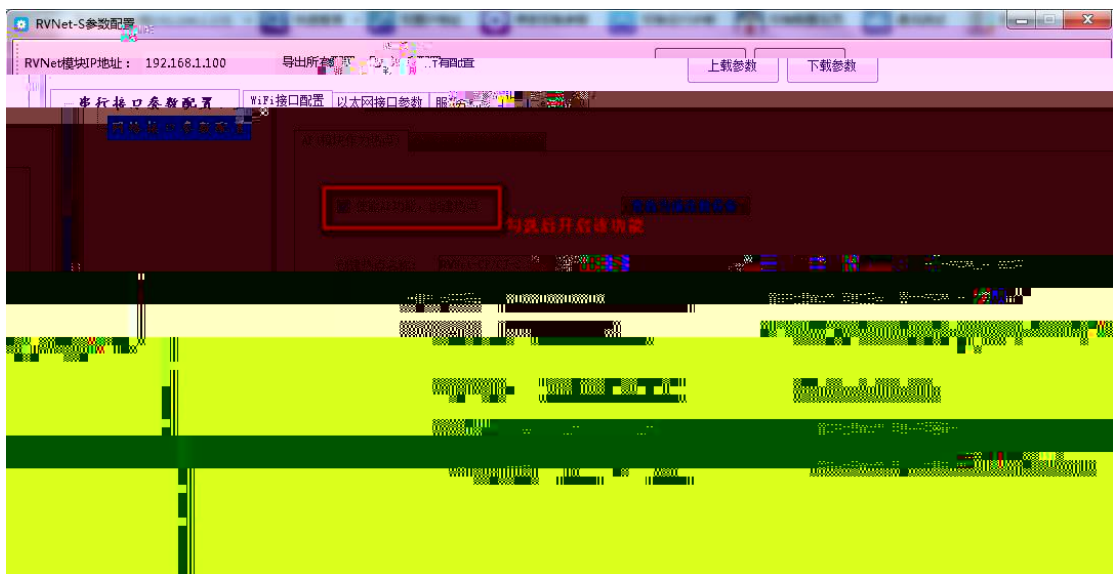
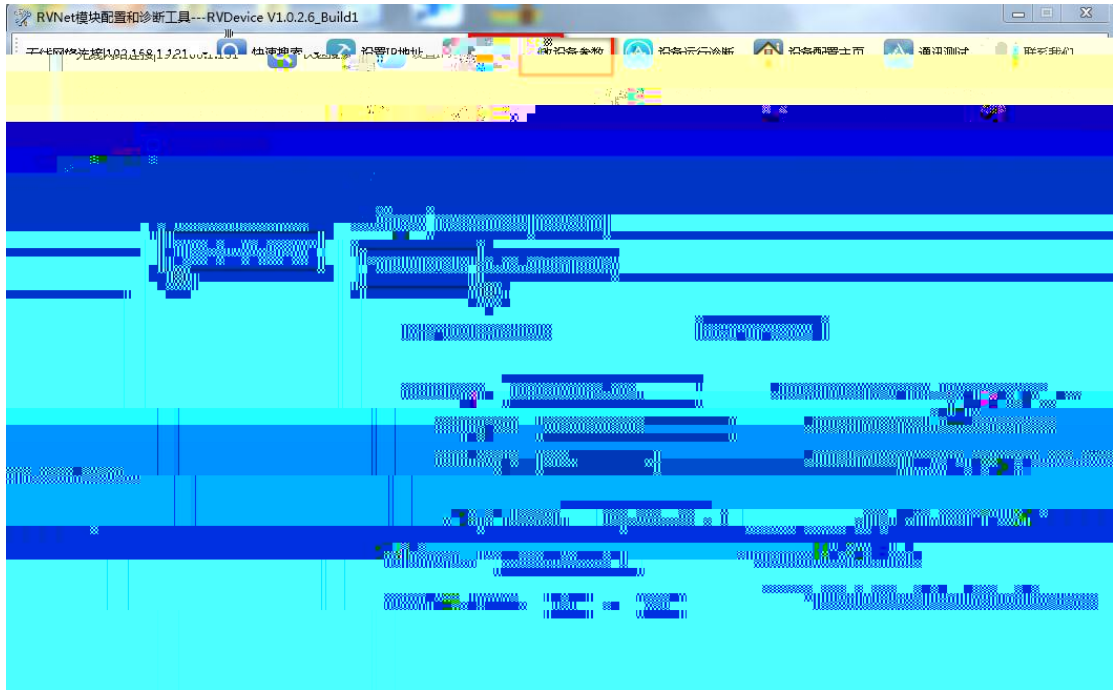






"

"

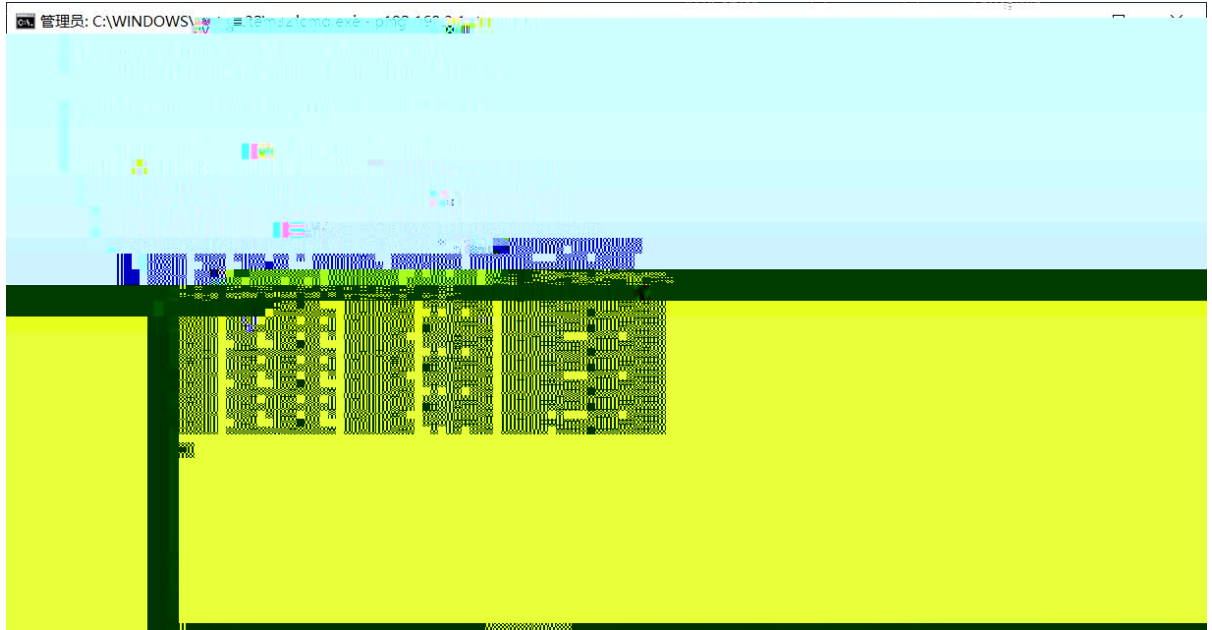


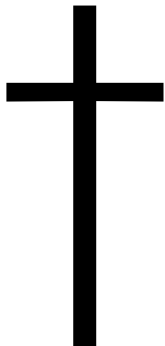
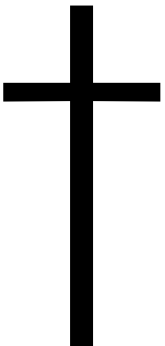


---

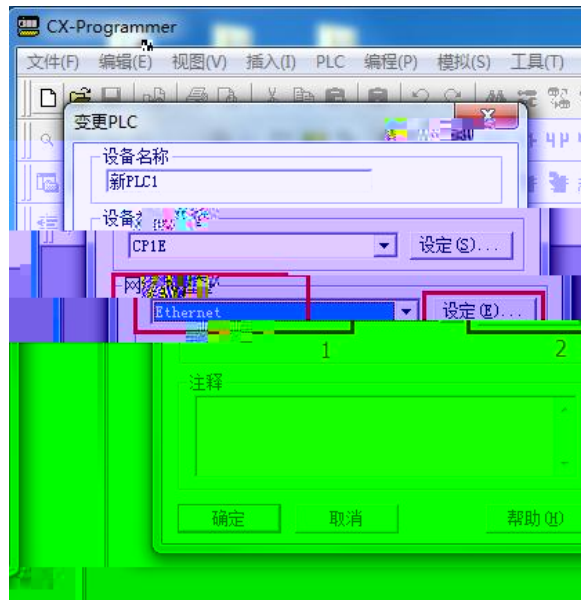
---

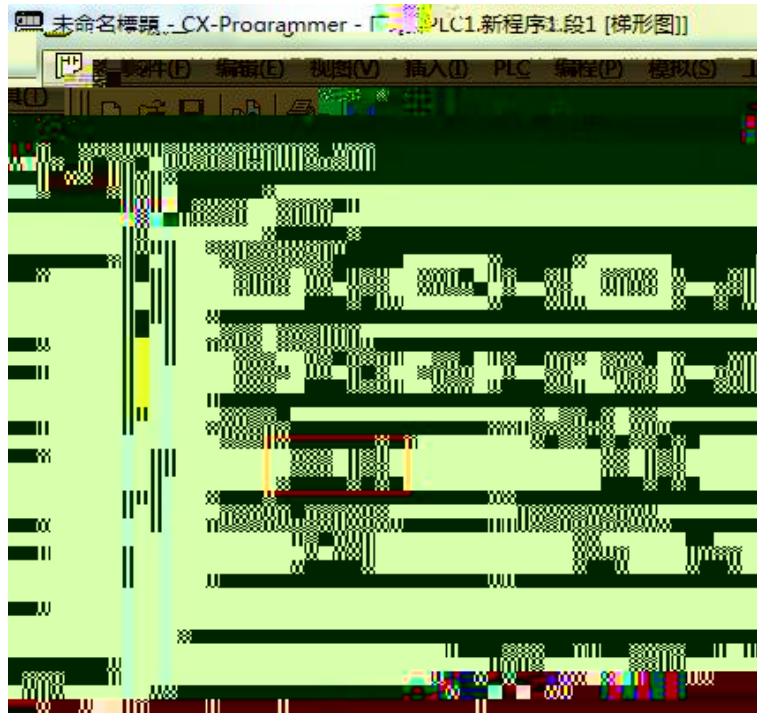
|





---

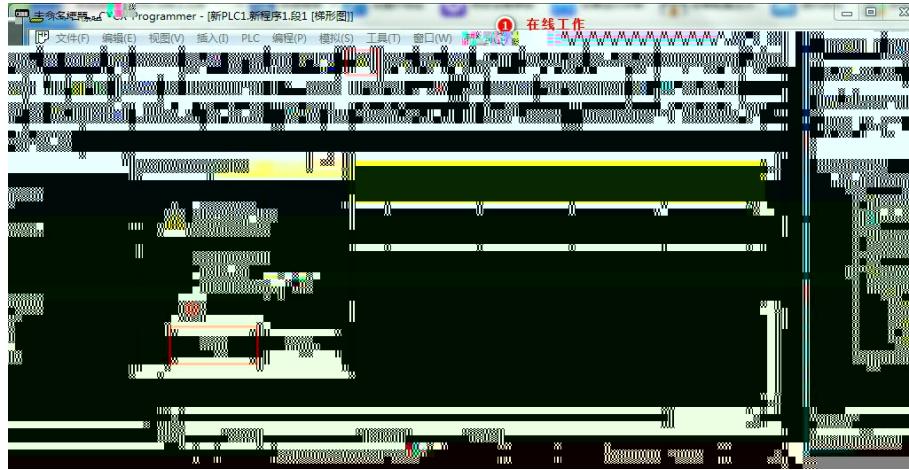




" "



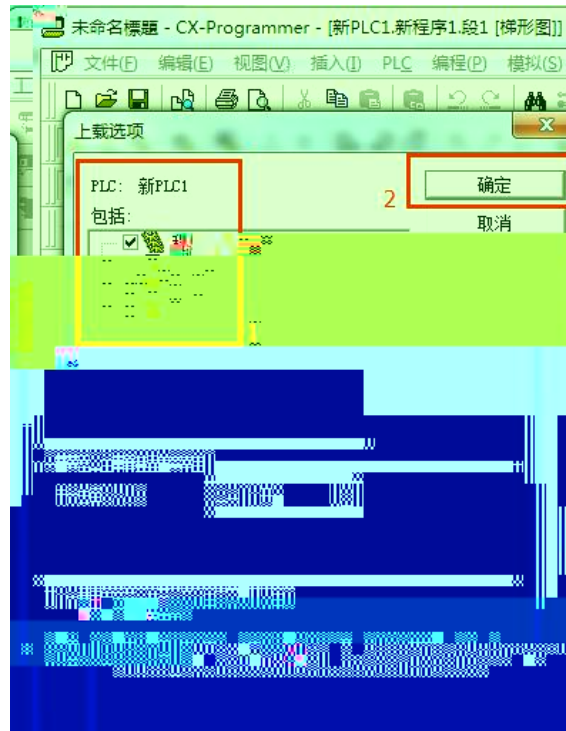
" "



“ “ “ “ “ “ “

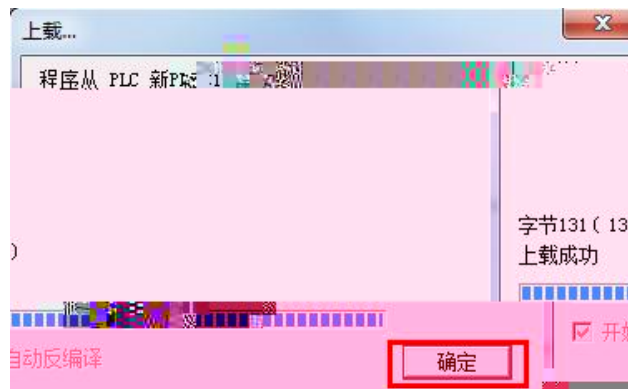


“ “

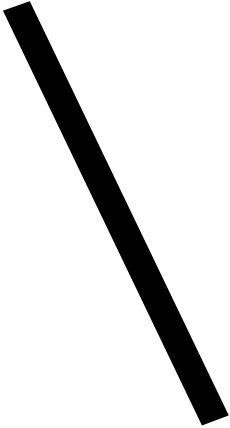
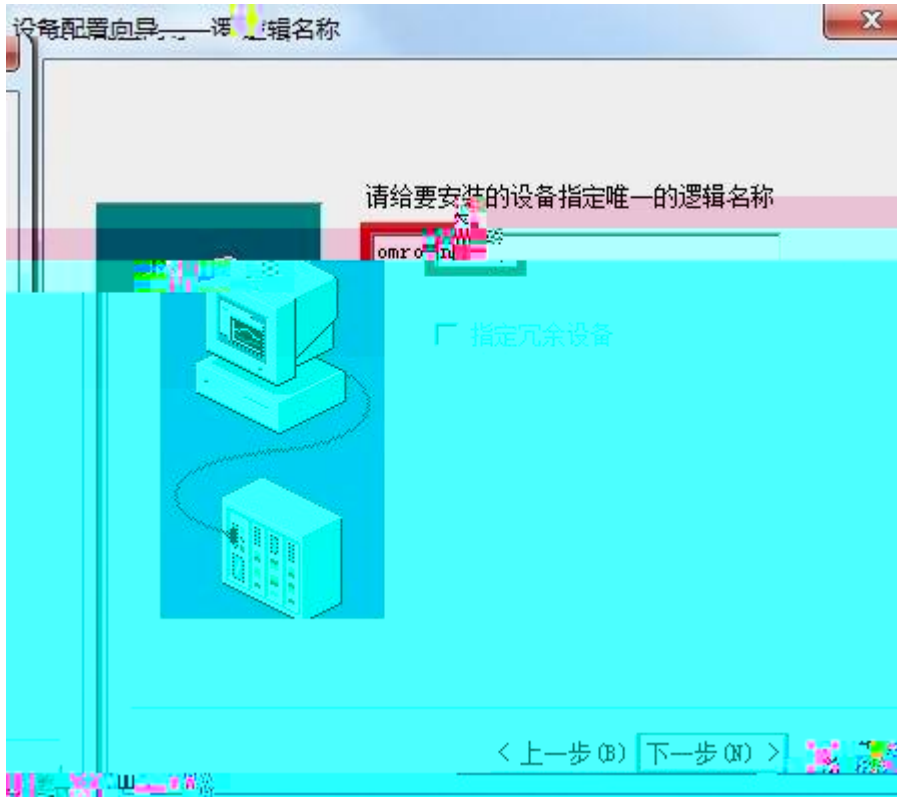


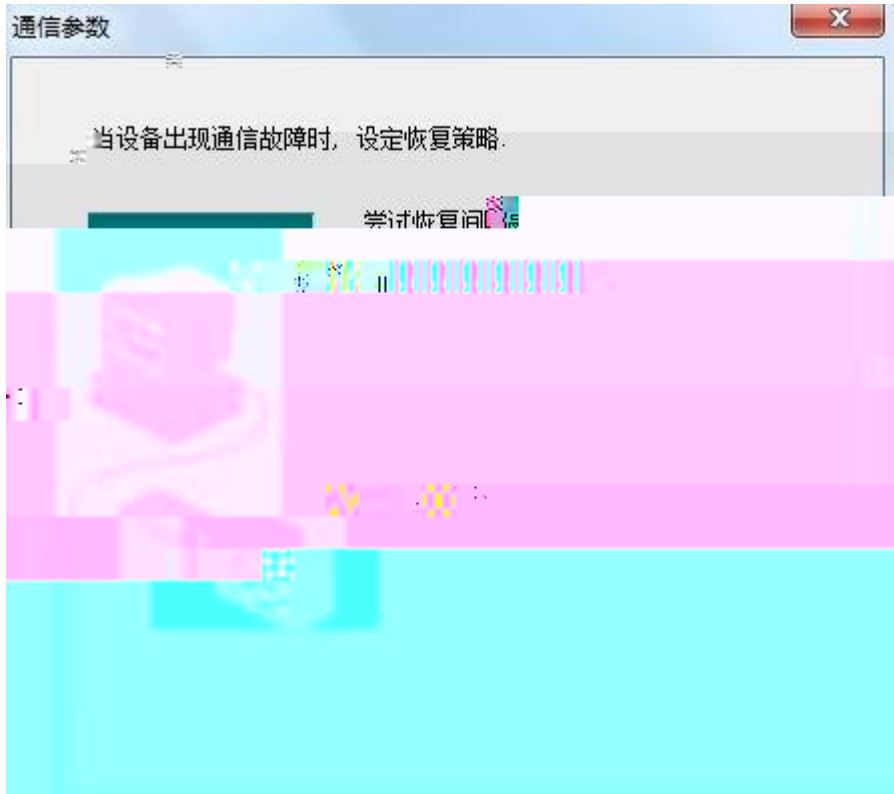
" "

" "

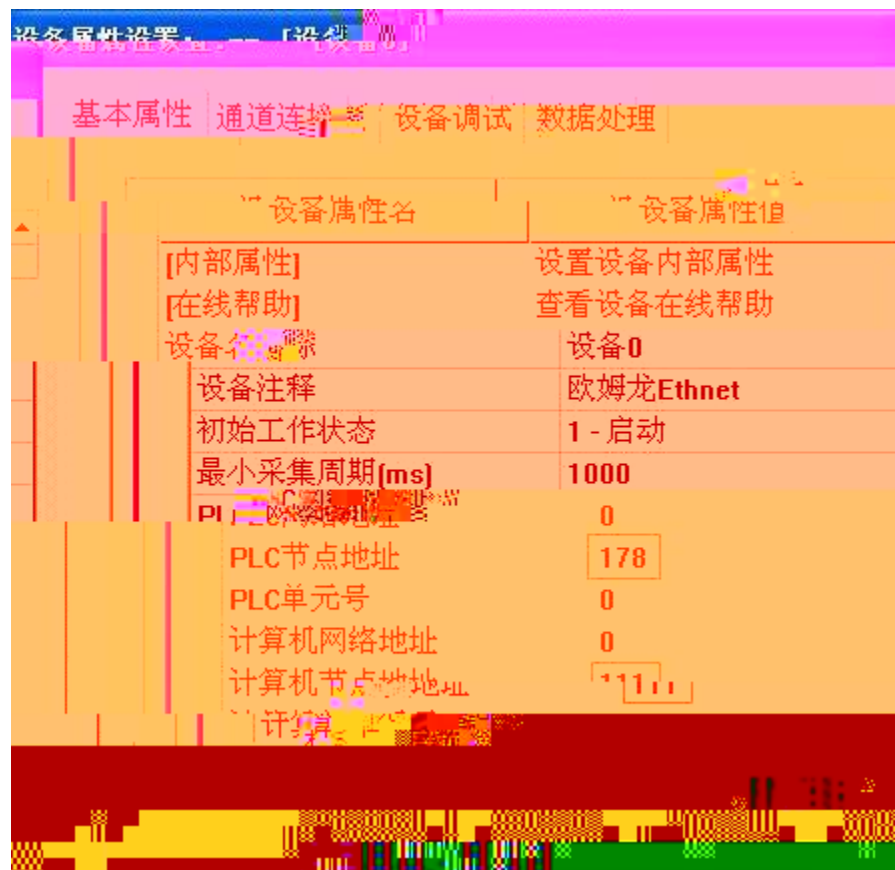
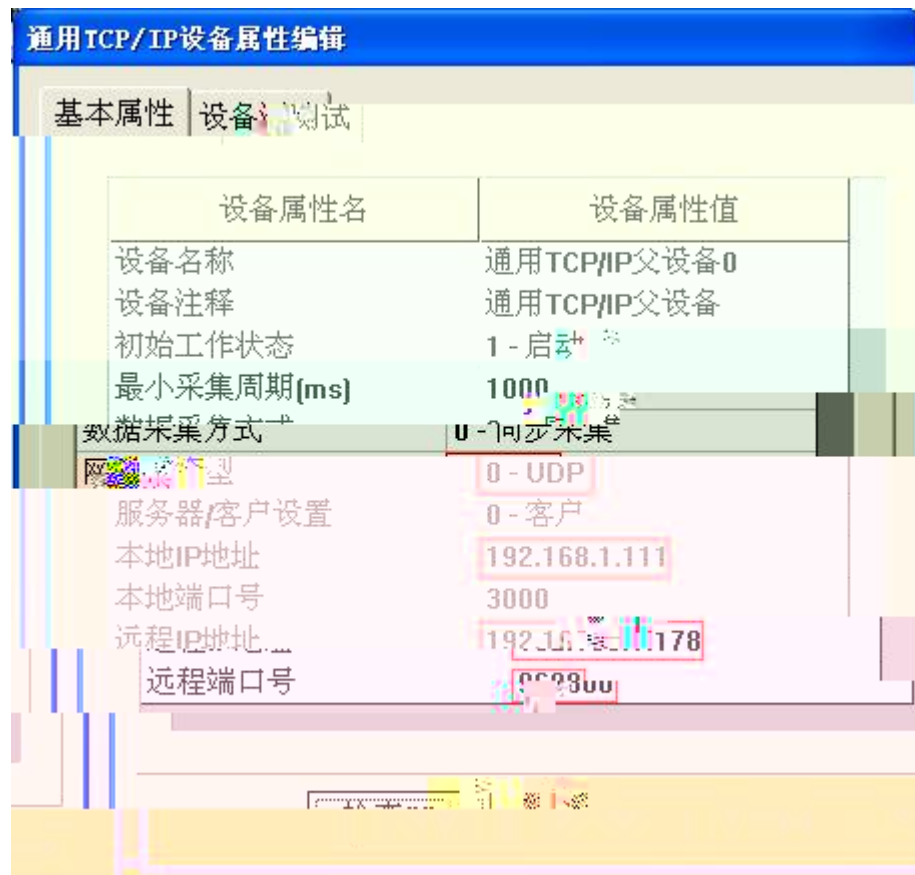


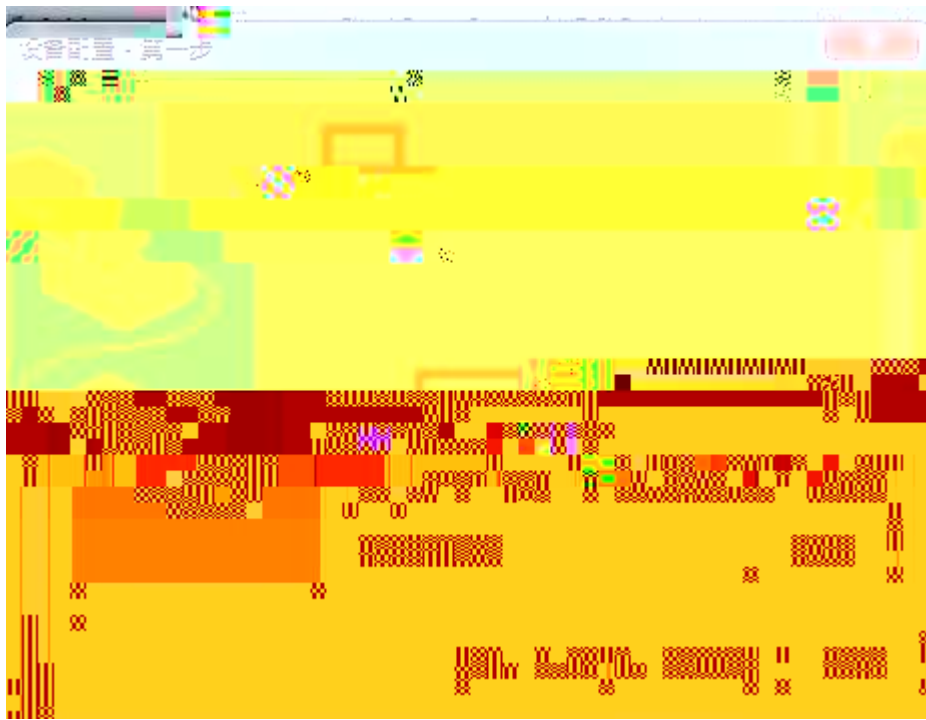




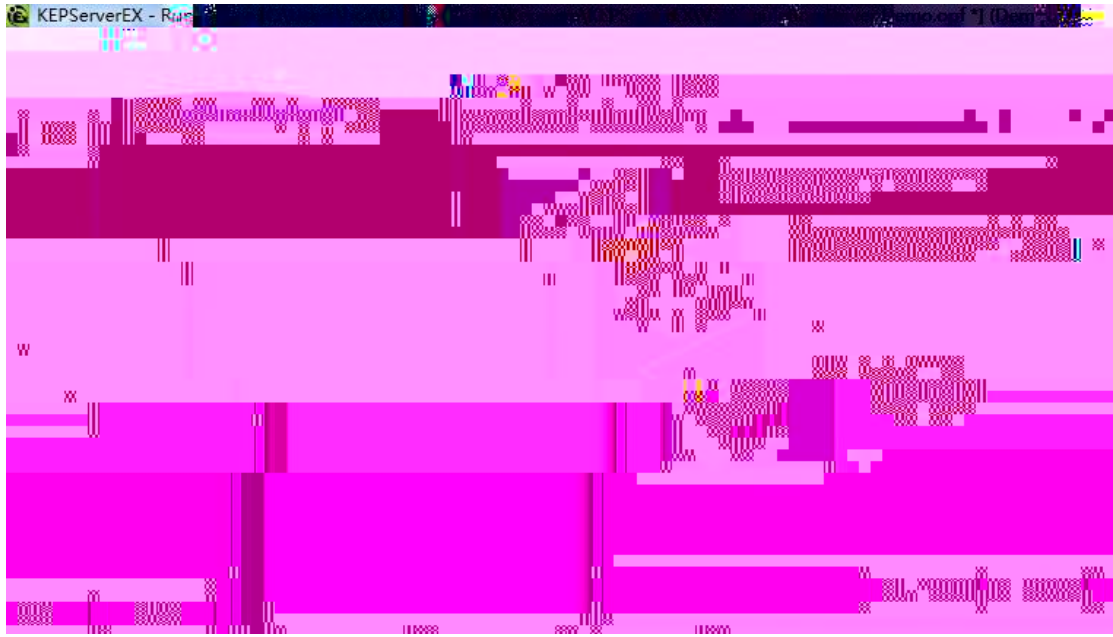




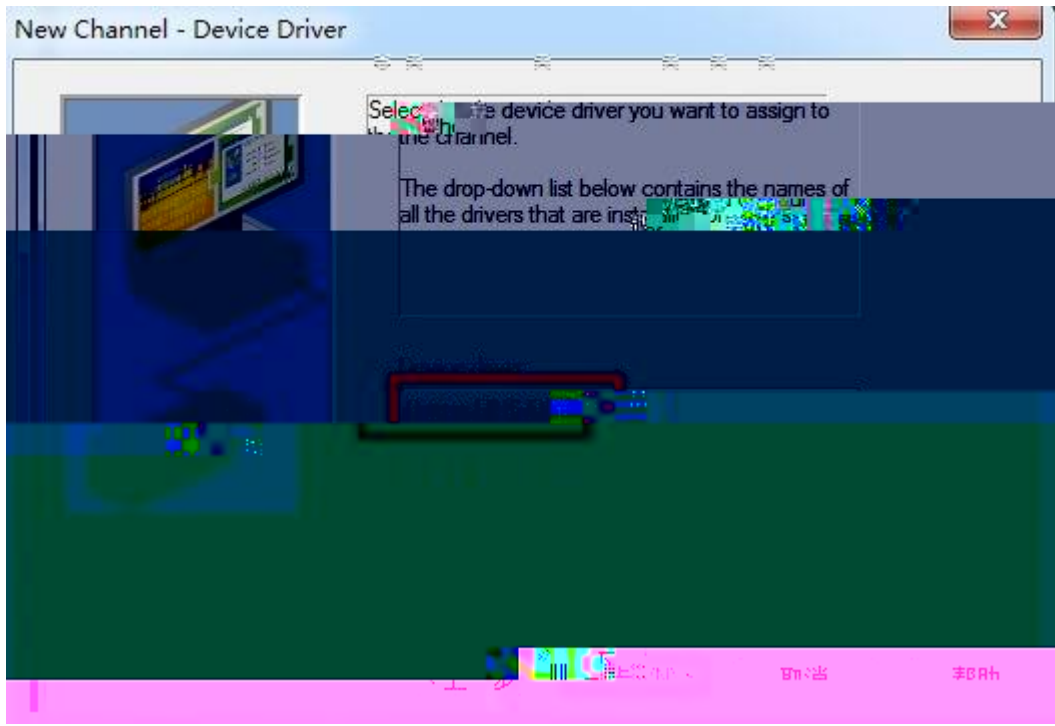




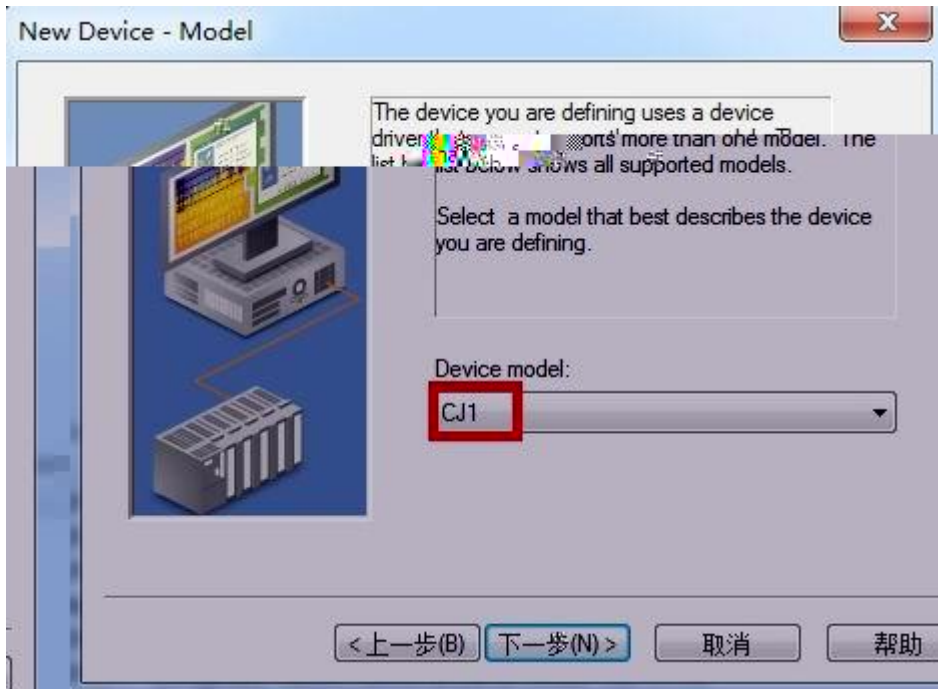
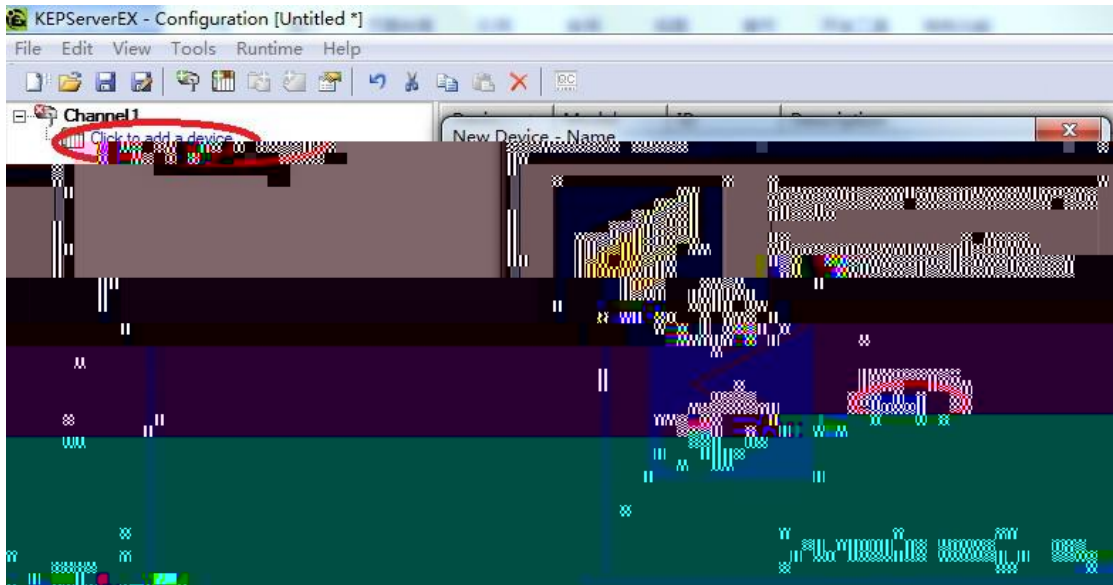




" " " "









---


1



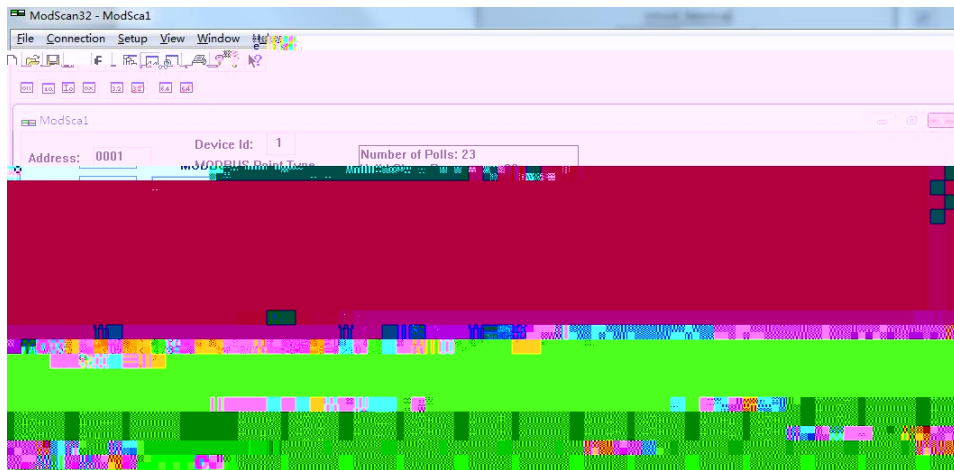
$\text{Modbus}$       0      01604       $CI\ 0100.3$      $m=100\ n=3$        $000001+100*16+3=001604$

2      ModScan32





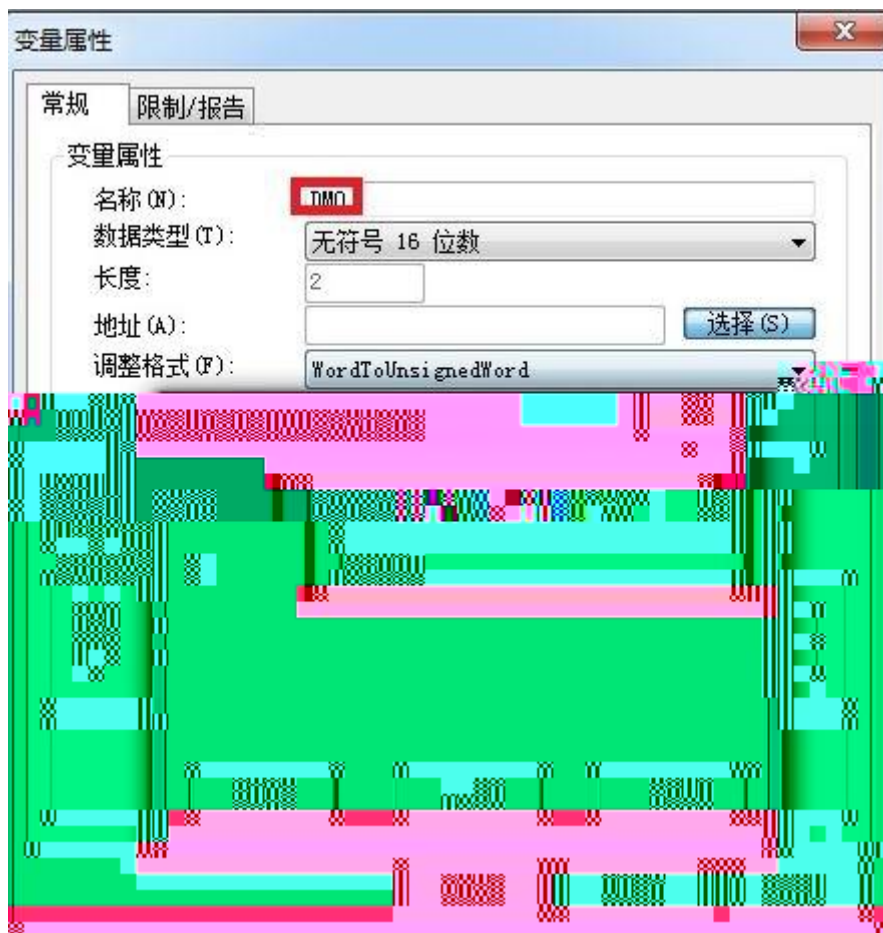
" "



---

---

|



---

---

|

---

--	--

\_\_\_\_\_

\_\_\_\_\_

