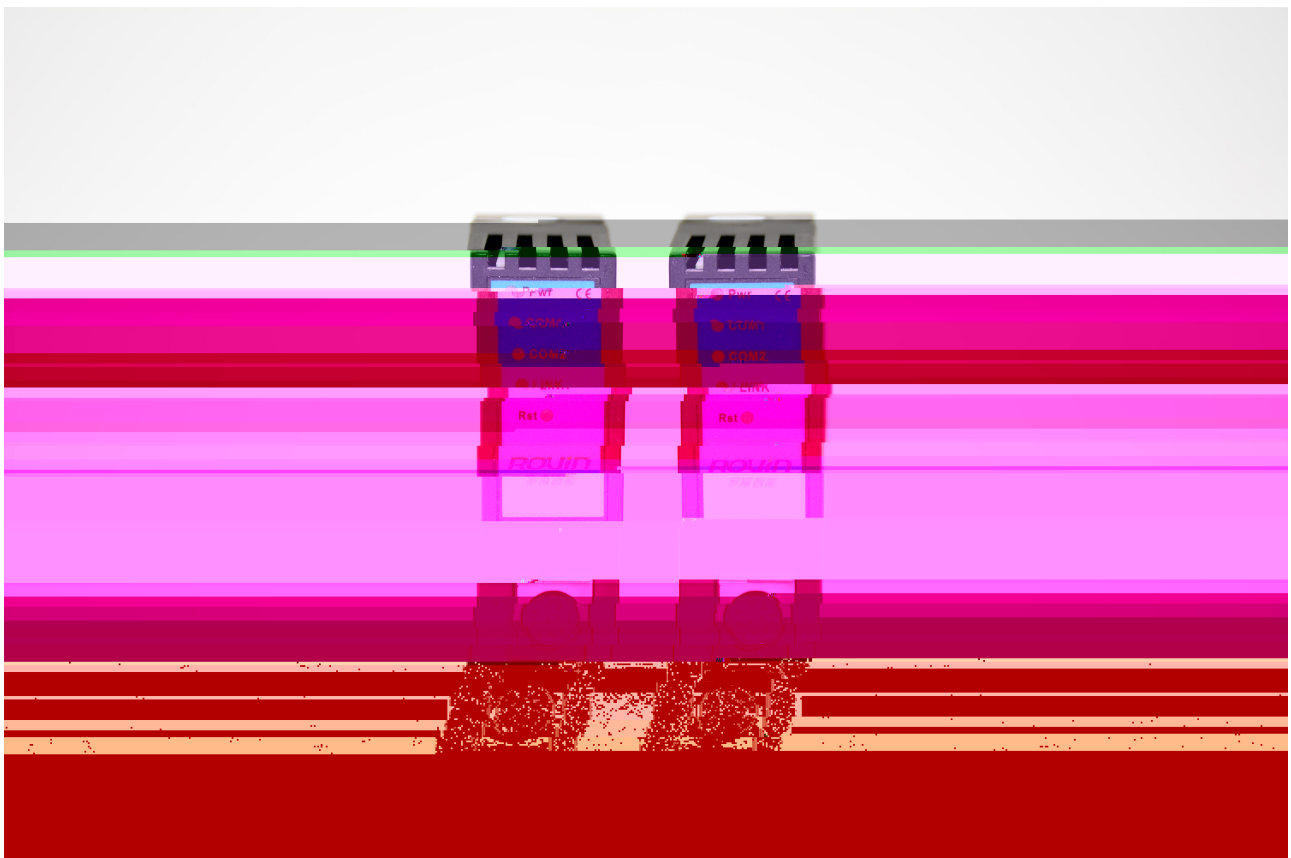




RVNet-FX



1. RVNet-FX

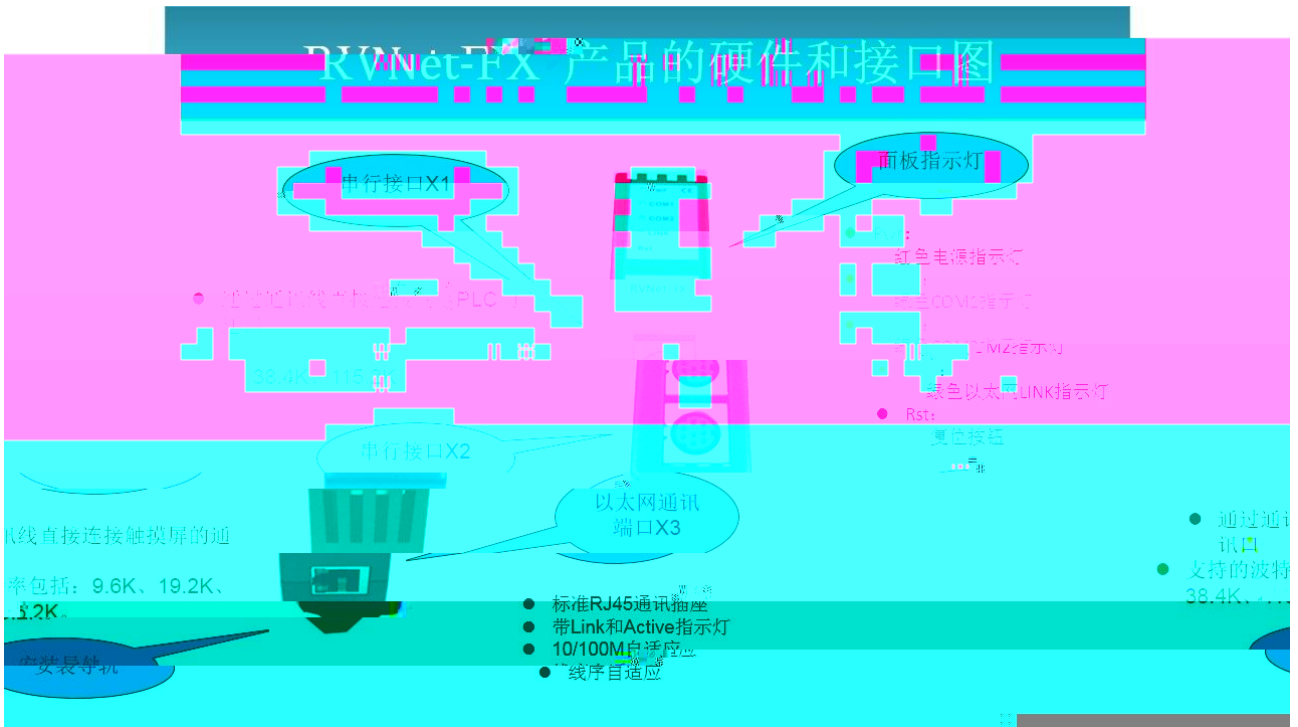
1.1

1.21

	FX	PLC		PLC
MCGS		RVNet		PLC

2

2.1



2.2



2.3

RVNet-FX MD8 X1 MD8 X2 RJ45 X3 X4

2.3.1 X1

X1 MD8 PLC

1	—————	TXD-
2	—————	GND
4	—————	RXD-
5	—————	5V
7	—————	RXD+

X1 9.6k 19.2k 38.4K 115.2k

2.3.2 X2

X2 MD8

1	—————	RXD-
2	—————	RXD+
3	—————	GND
4	—————	TXD-
7	—————	TXD+

X2 9.6k 19.2k 38.4K 115.2k

2.3.3 X3

RJ45

1	—————	TX+
2	—————	TX-
3	—————	RX+
6	—————	RX-

Link Active 10/100M T568A/
T568B

2.3.4 24VDC X4

X4 RVNet-FX 24VDC 24VDC±20%/100mA



Internet Explorer

RVNet-FX

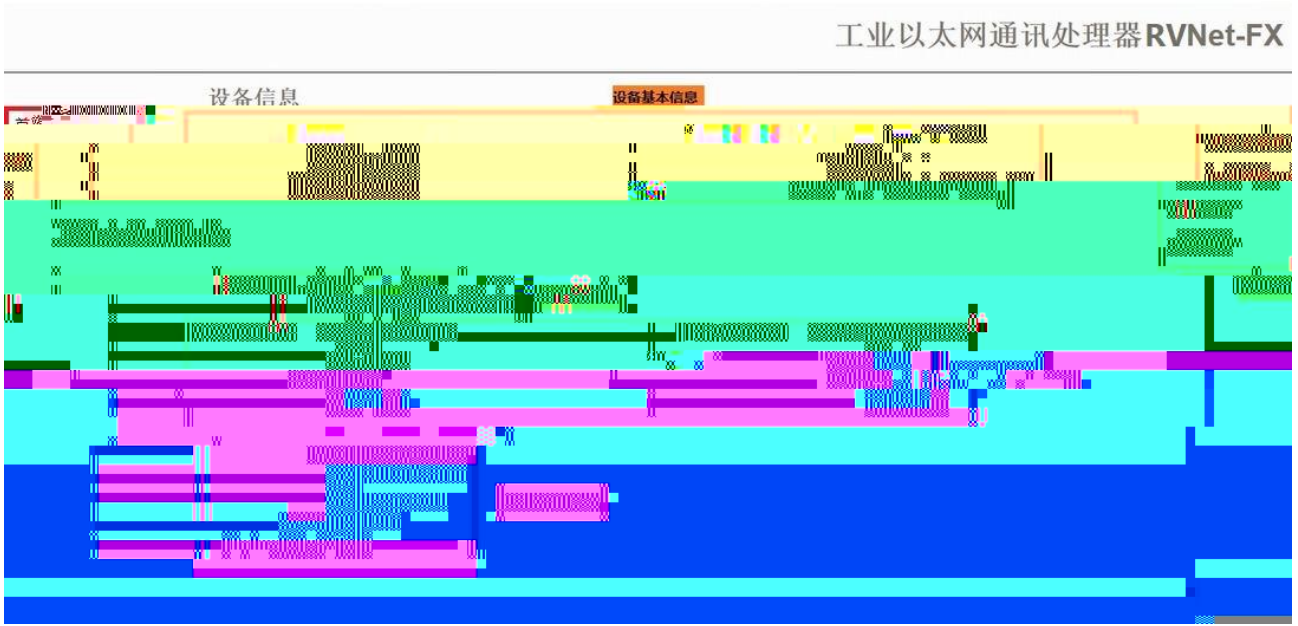
Web

192.168.1.178

RVNet-FX

IP



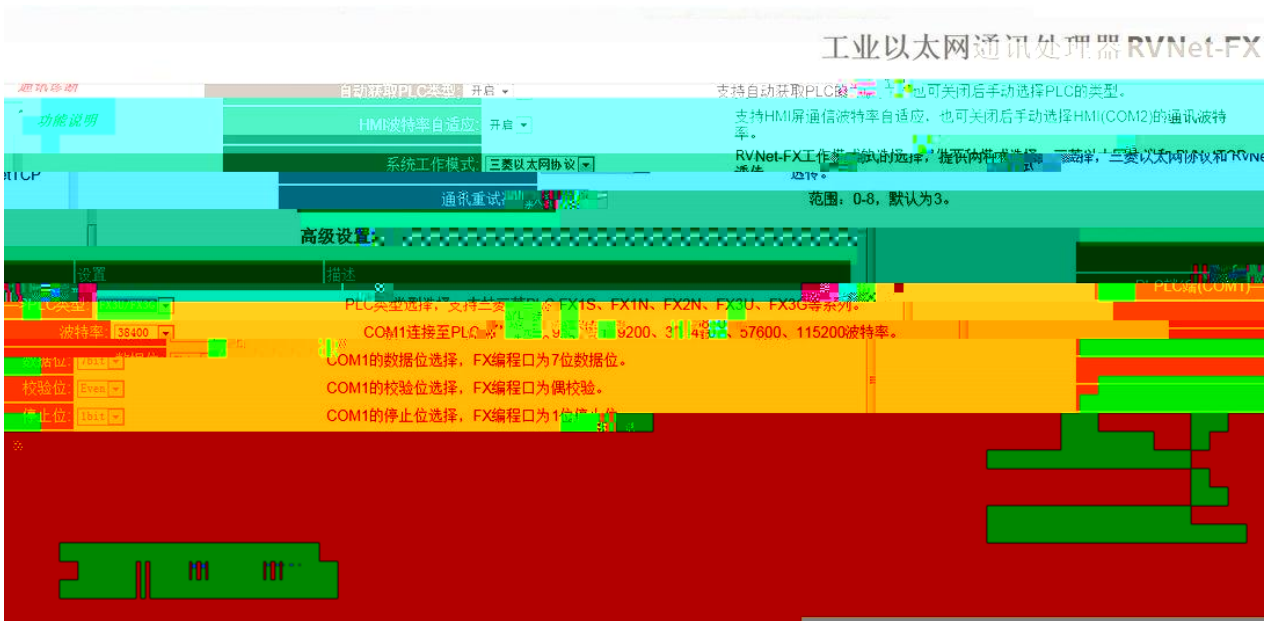


PLC

PLC

COM1 COM2

3.2.1



PLC

“PLC (COM1)——>PLC”

PLC

HMI

“HMI (COM2)——>”

HMI

RVNet-FX
"RVNetTCP"

" " "RVNetTCP" "

RVNet-FX 3

PLC (COM1) —> PLC
PLC " " "

PLC FX1S FX1N/FX2N FX3U/FX3G

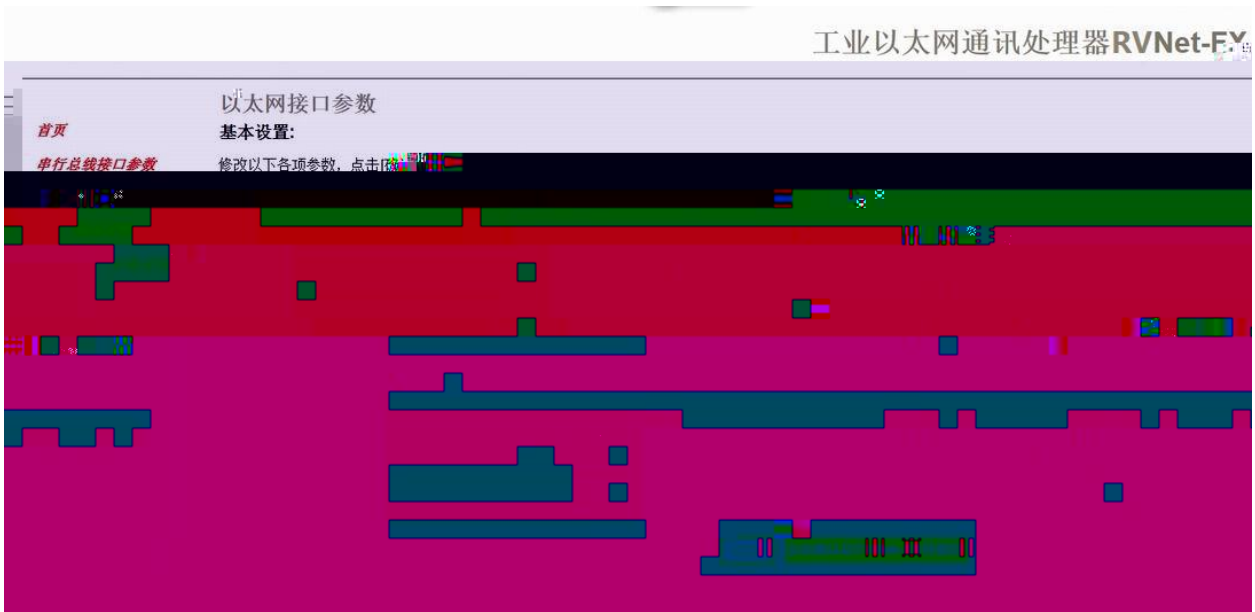
PLC (COM1) —>
"FX1N/FX2N" [

38400 19200 PLC PLC

HMI (COM2) —>
"HMI

"HMI " " " HMI

3.2.2



RVNet-FX IP

[] RVNet-FX

IP

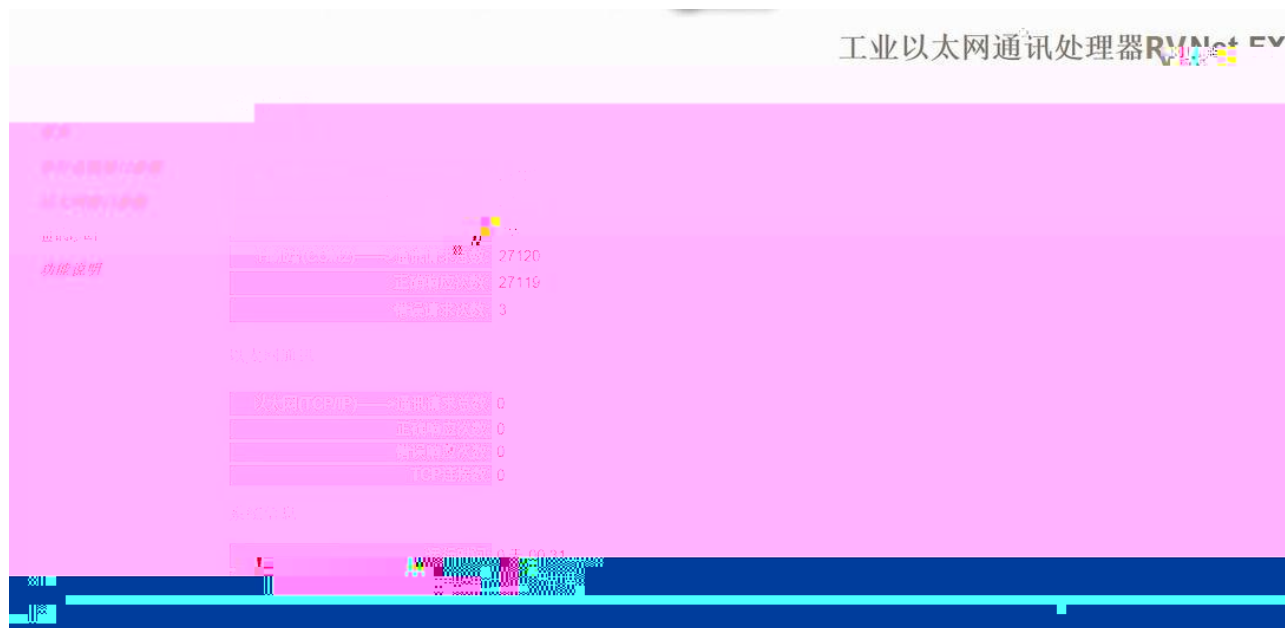
5551

"RVNetTCP"

M

6f-EX

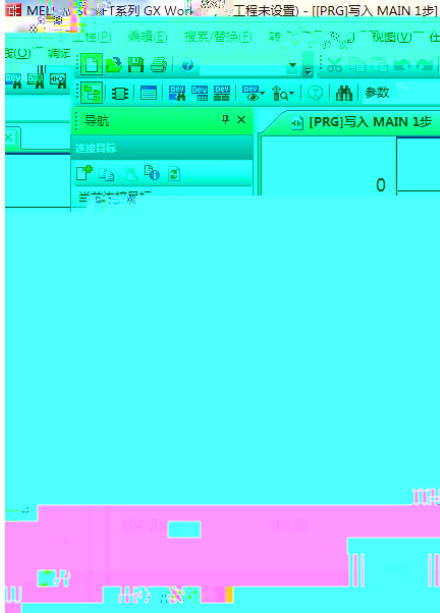
3.2.3



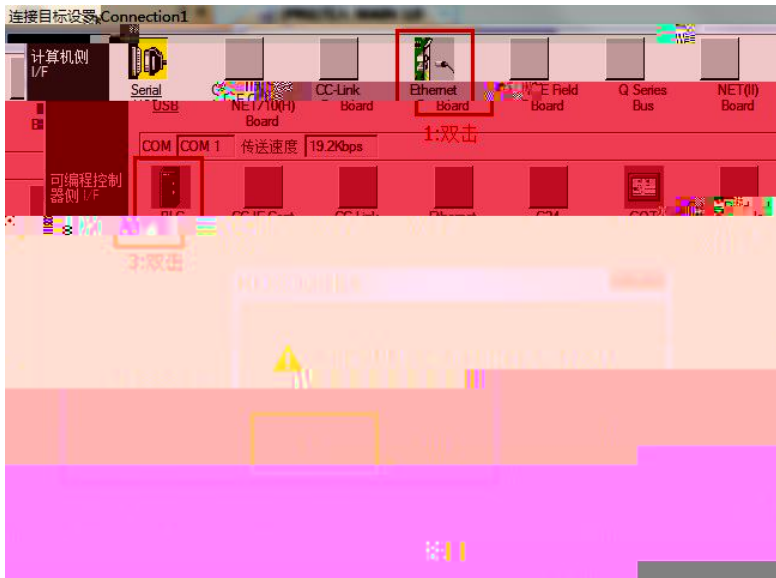
4.1.1 FX3G/3GC FX3S FX3U/3UC

FX3G/3GC FX3S FX3U/FX3UC 3 FX RVNet-FX GXWorks2

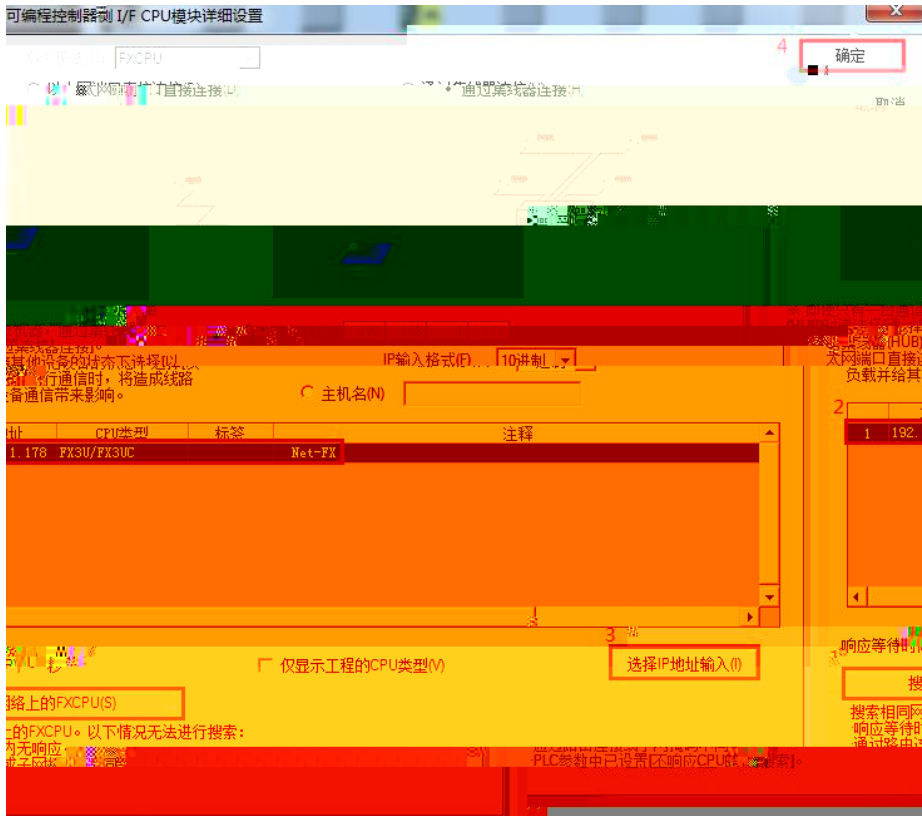
1. FX3U FX3UC Connection



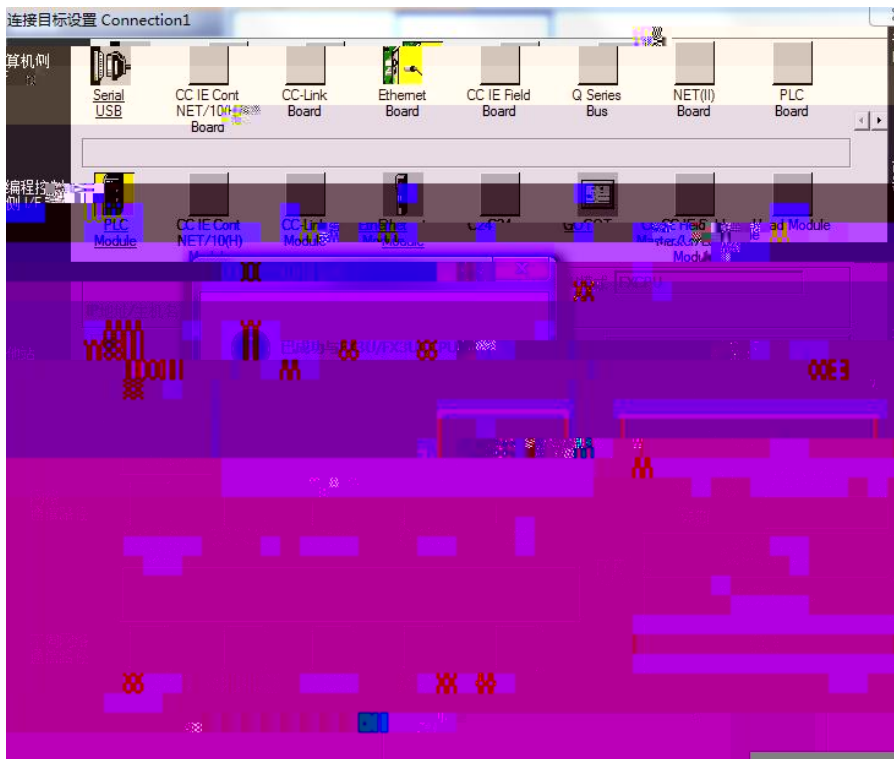
2. EthernetBoard PLC Module



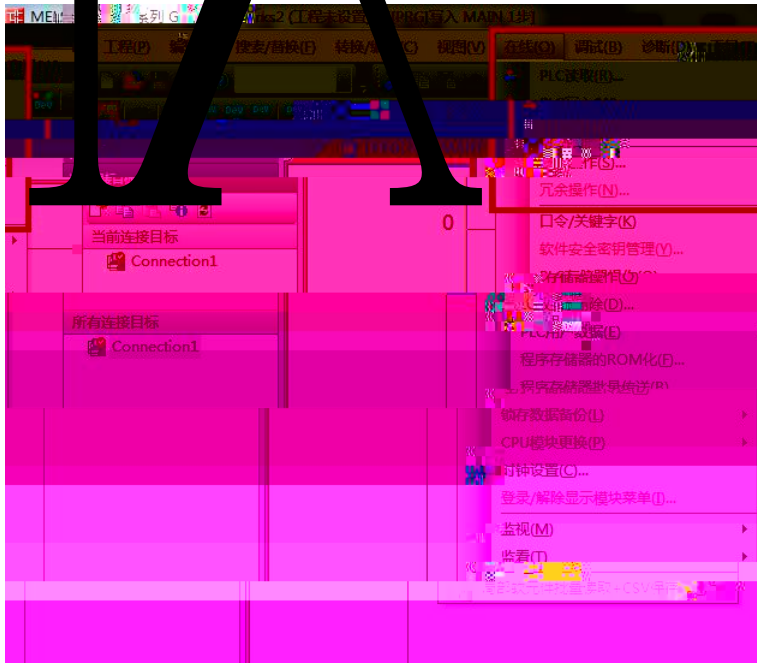
3. FXCPU(S) RVNet-FX FX3UC



4. IP FX3UCCPU



5. PLC



4.1.2 FX1N/1NC FX2N/2NC FX1S

		FXCPU		FX1N	FX2N	FX1S	FXPLC
RVNet-FX	GXV2N	b	X				

GOT



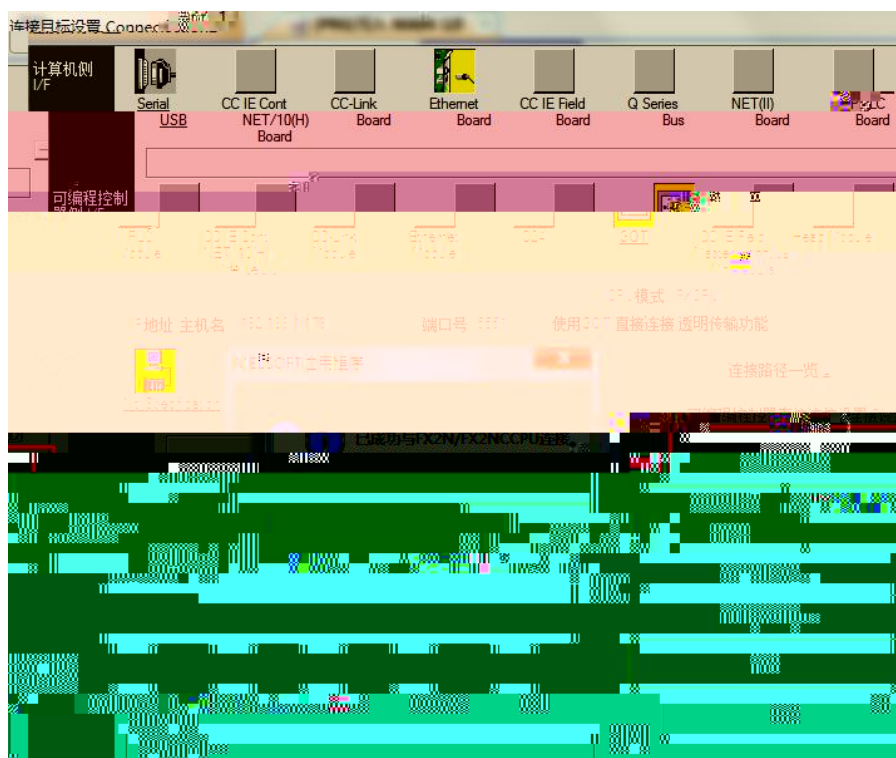
3

IP

4

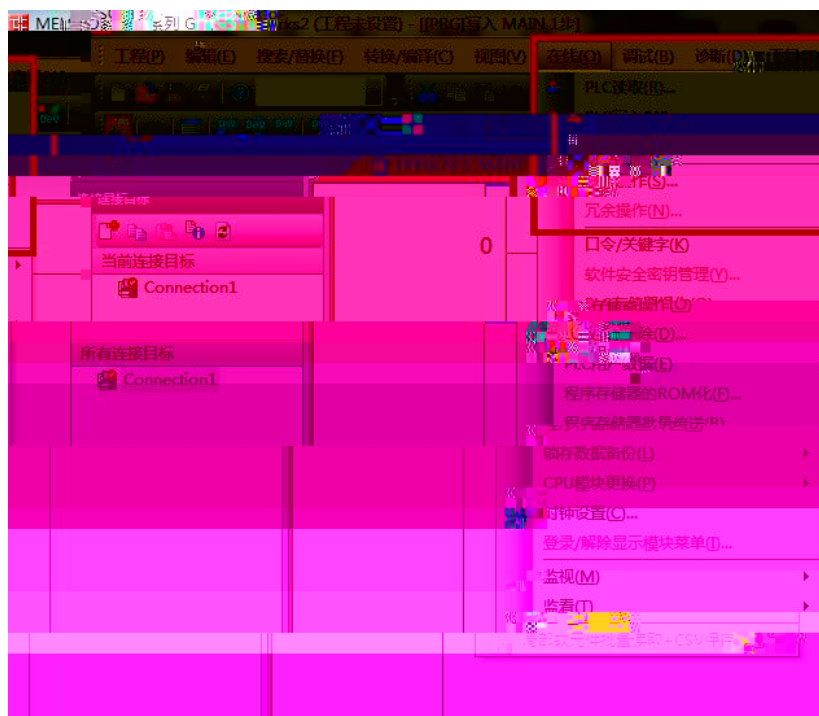
IP

FX2NCCPU



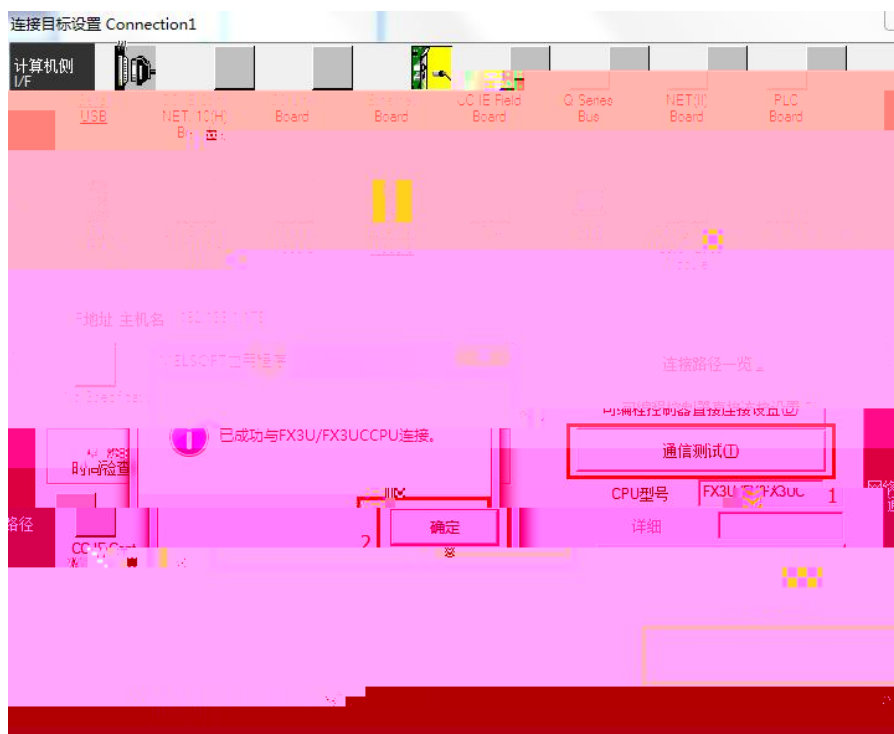
5

PLC

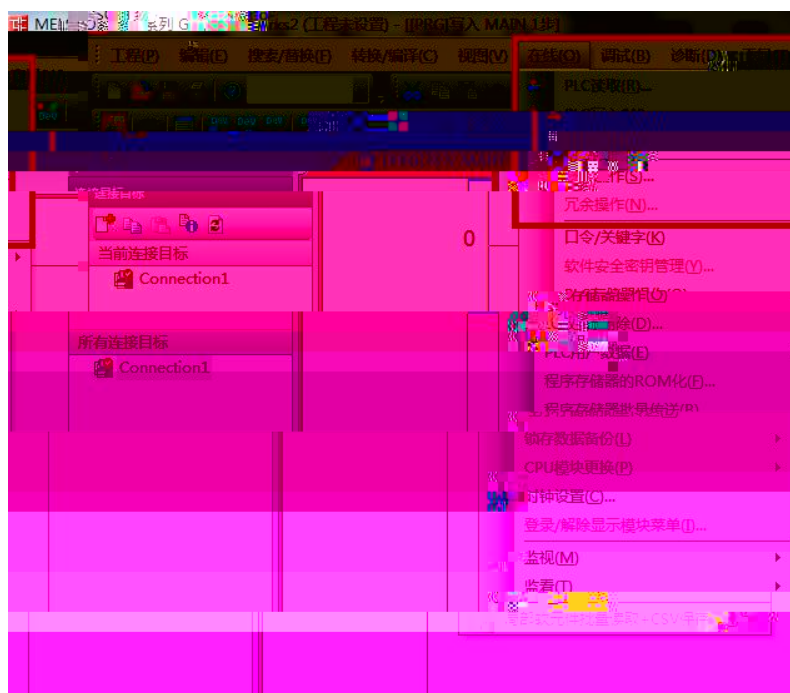




4. IP FX3UCCPU



5. PLC



4.2 RVNet-FX

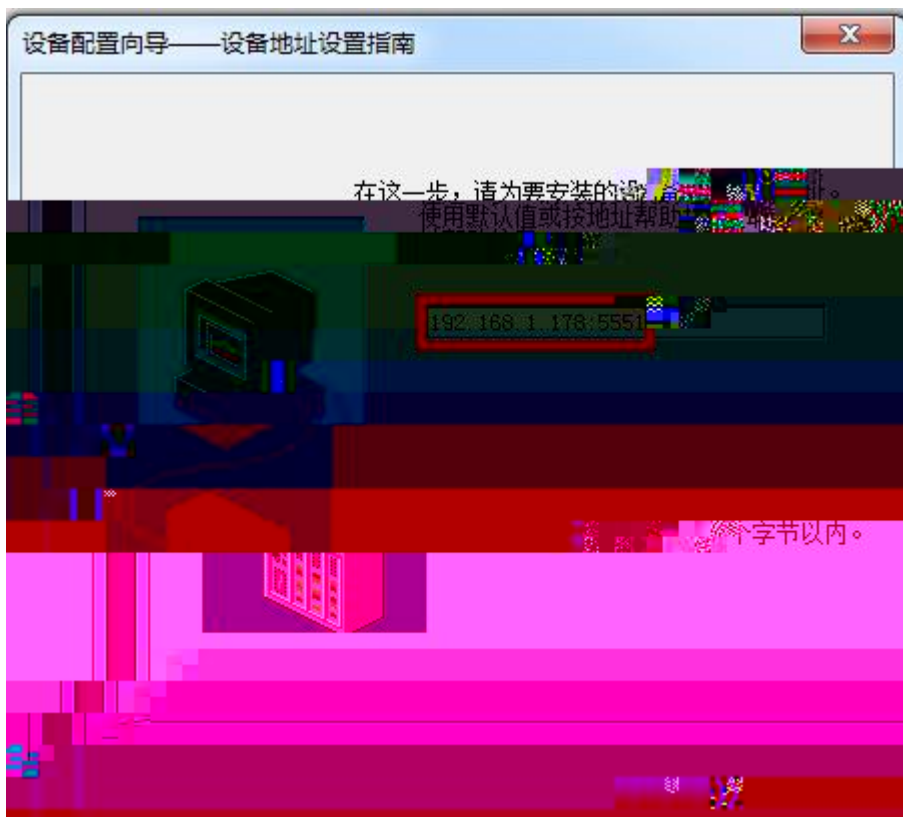
- 1.
2. COM1 FX3u_16M_Ethernet----TCP



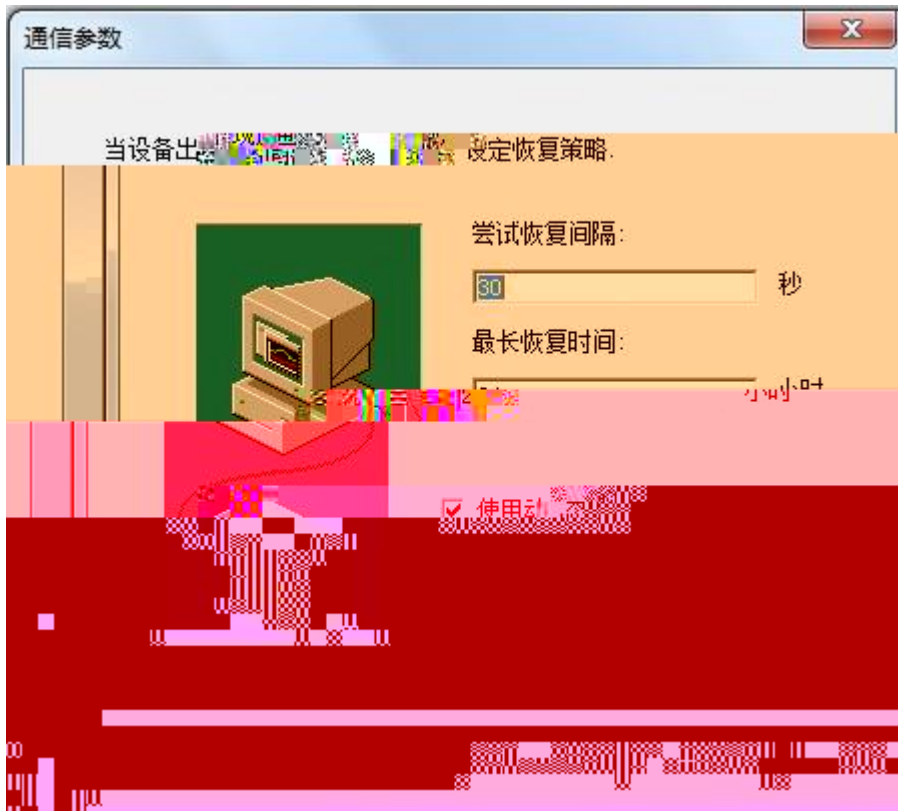
- 3.



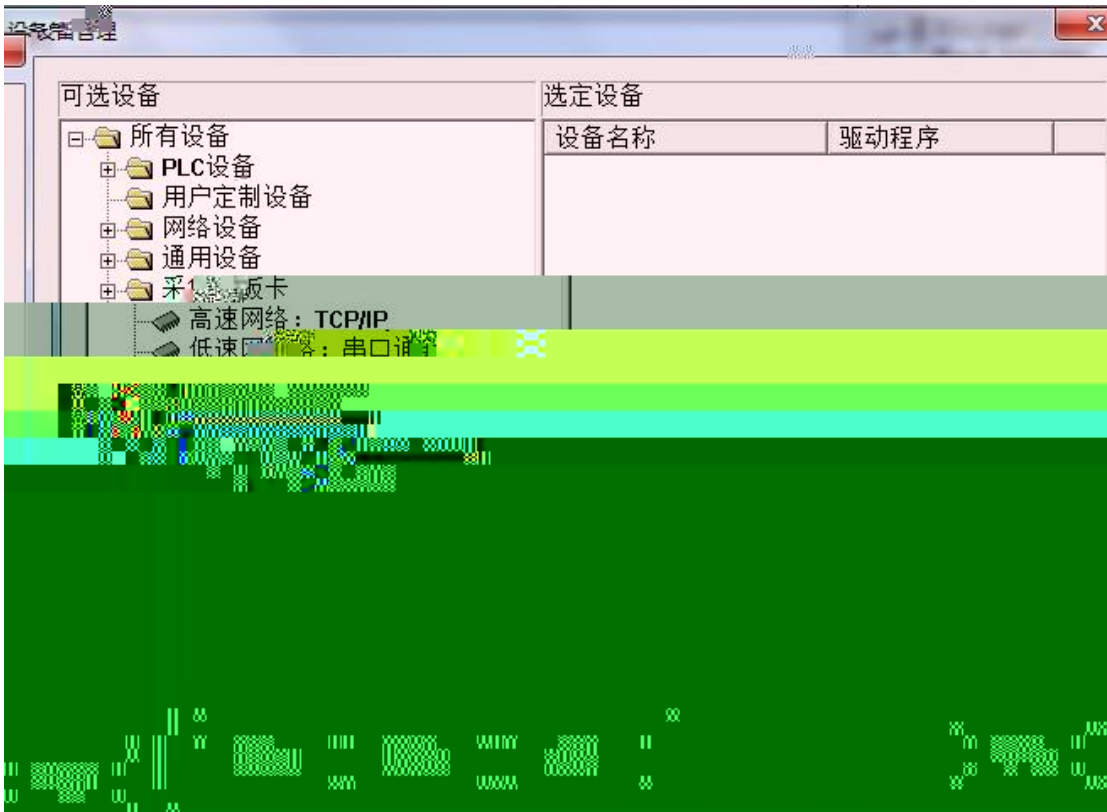
4. RVNet-FX IP PLC 5551



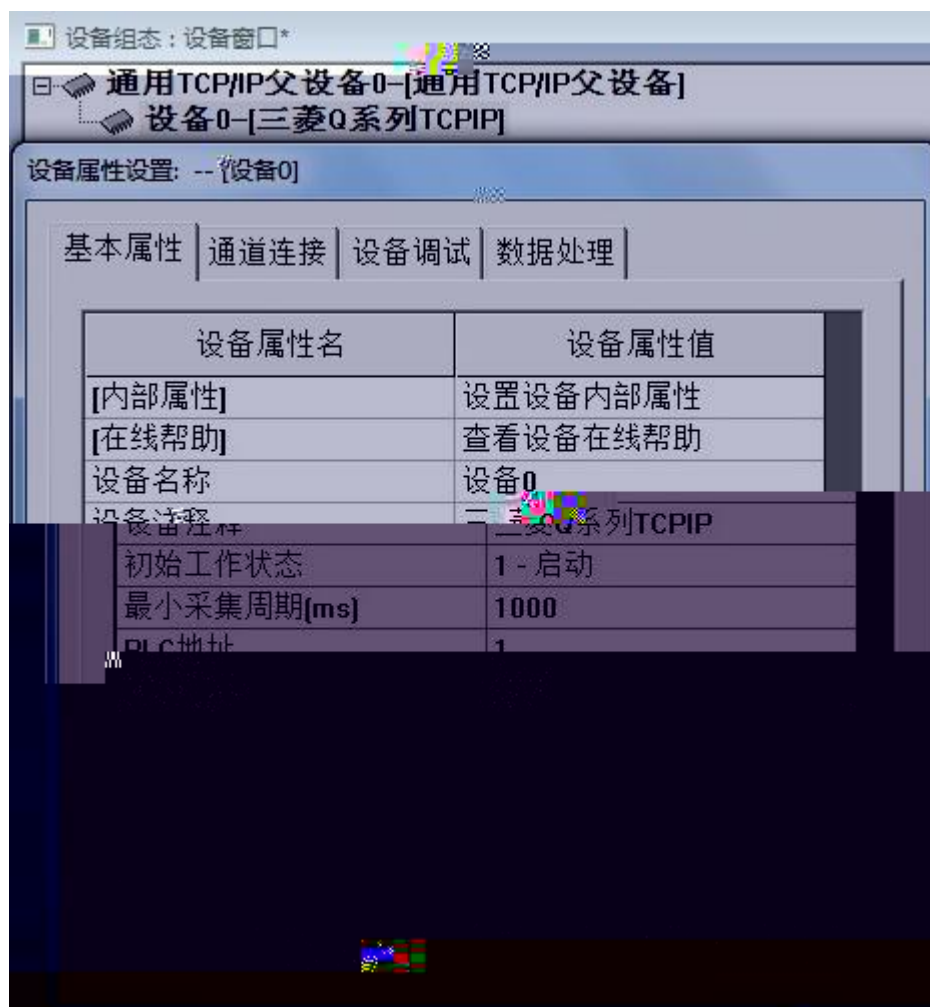
5.



4.3 RVNet-FX MCGS

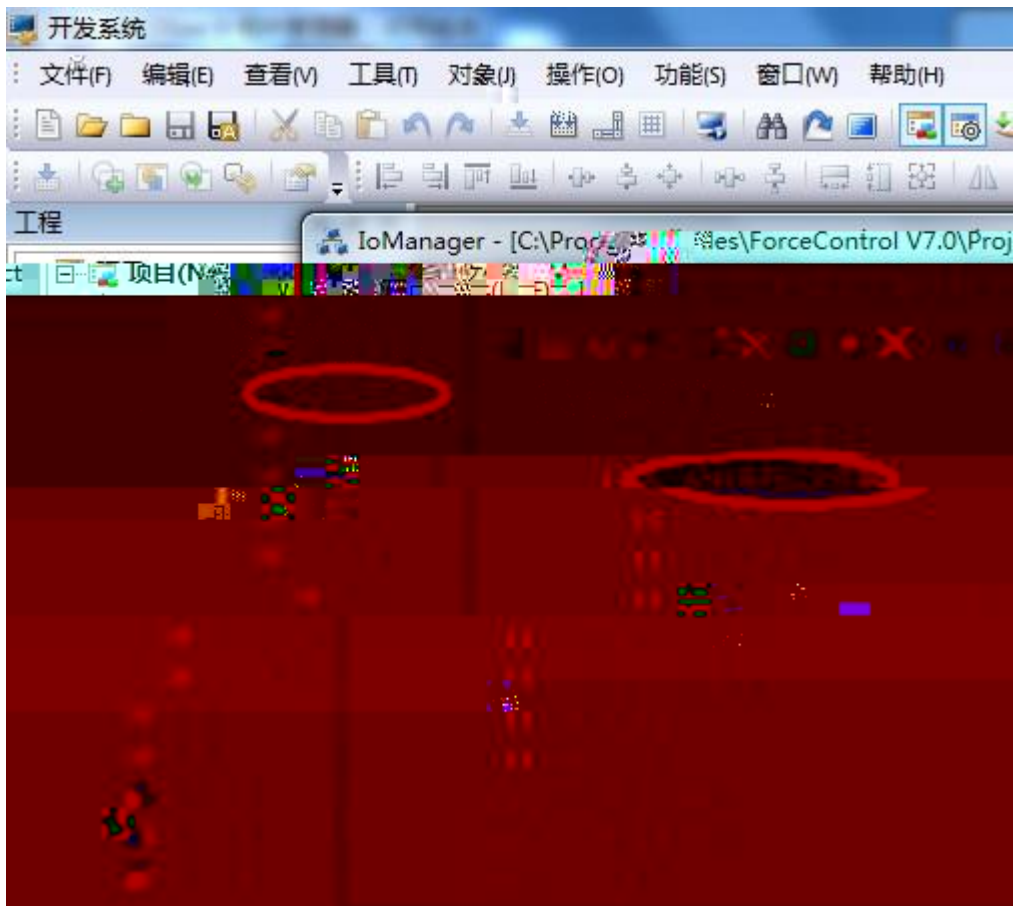


2-IP 5551 TCP/IP 0-IP TCP/IP IP RVNet-FX IP 1-TCP

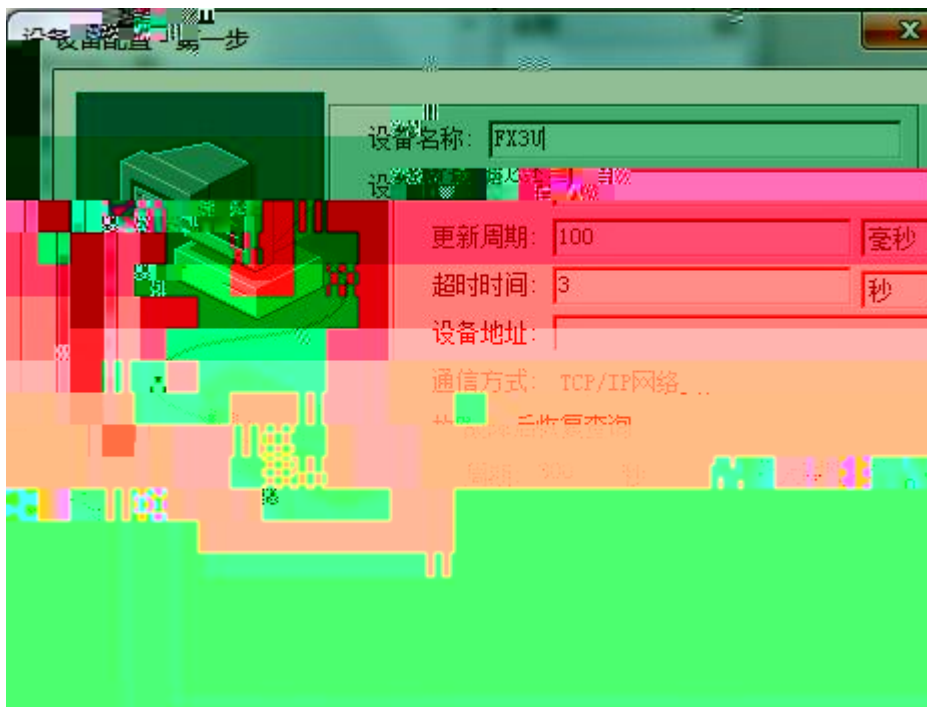


4.4 RVNet-FX

1. IO PLC MITSUBISHI -A
ANA



2



3

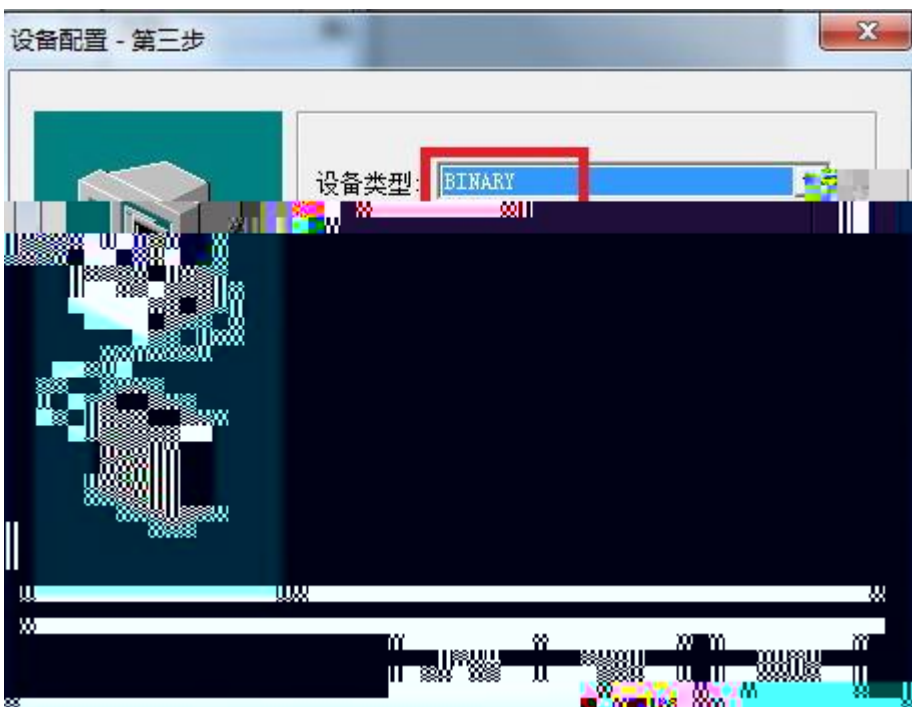
IP

RVNet-FX

IP



4. BINARY

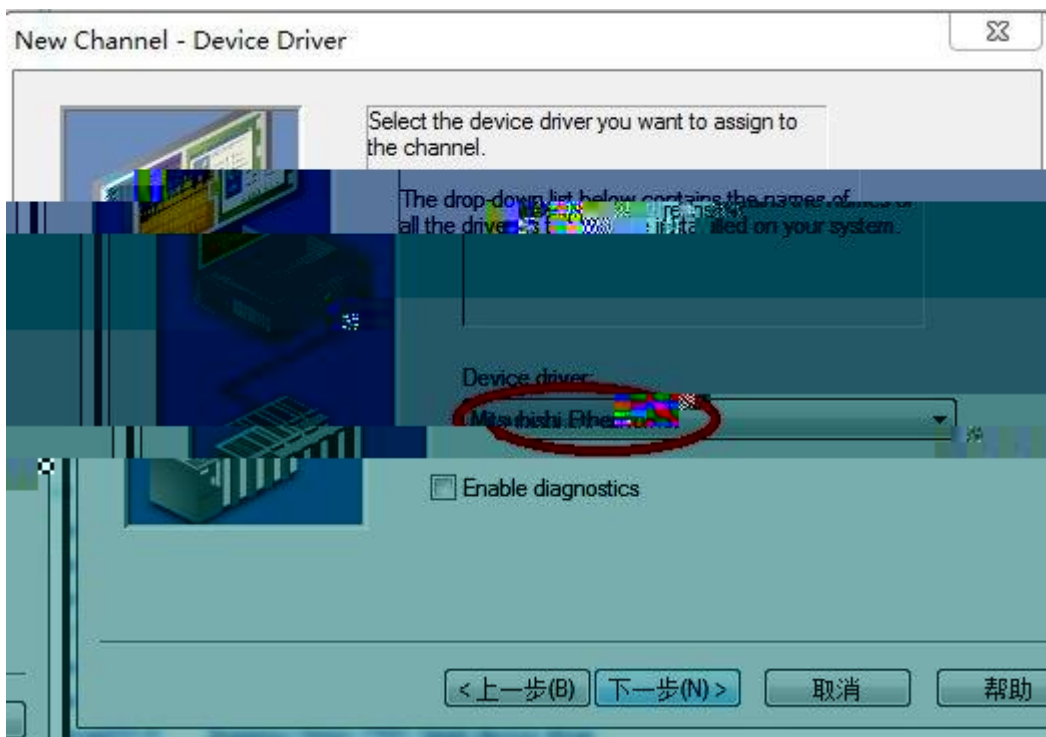


4.5 RVNet-FX Keware opc

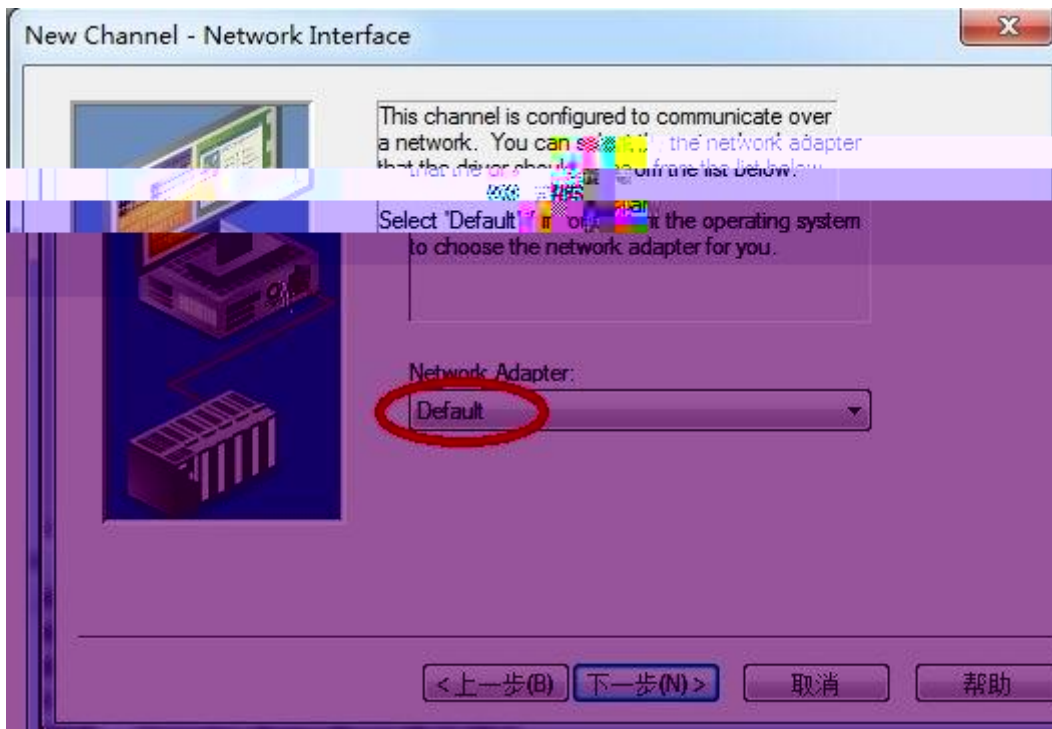
1. KEPServerEX Click to add a channel



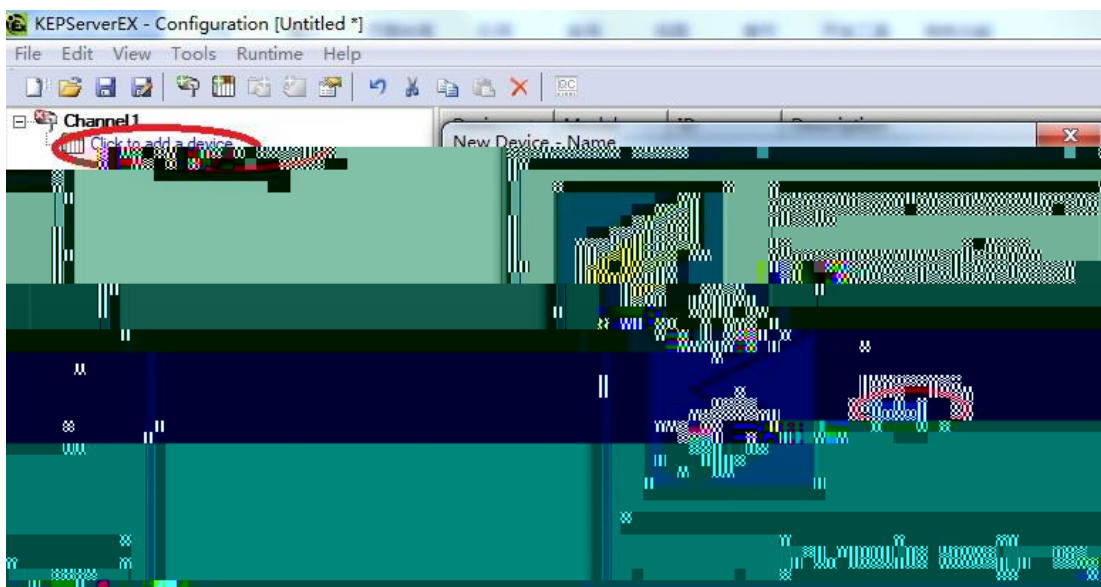
2 Mitsubishi Ethernet



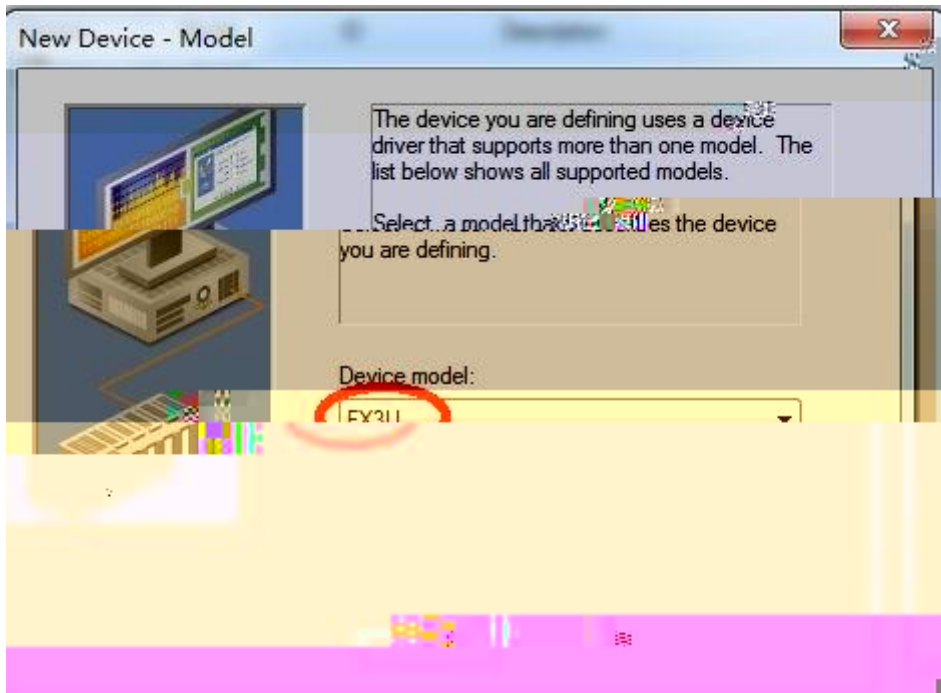
3 "Default"



4 click to add a device ,



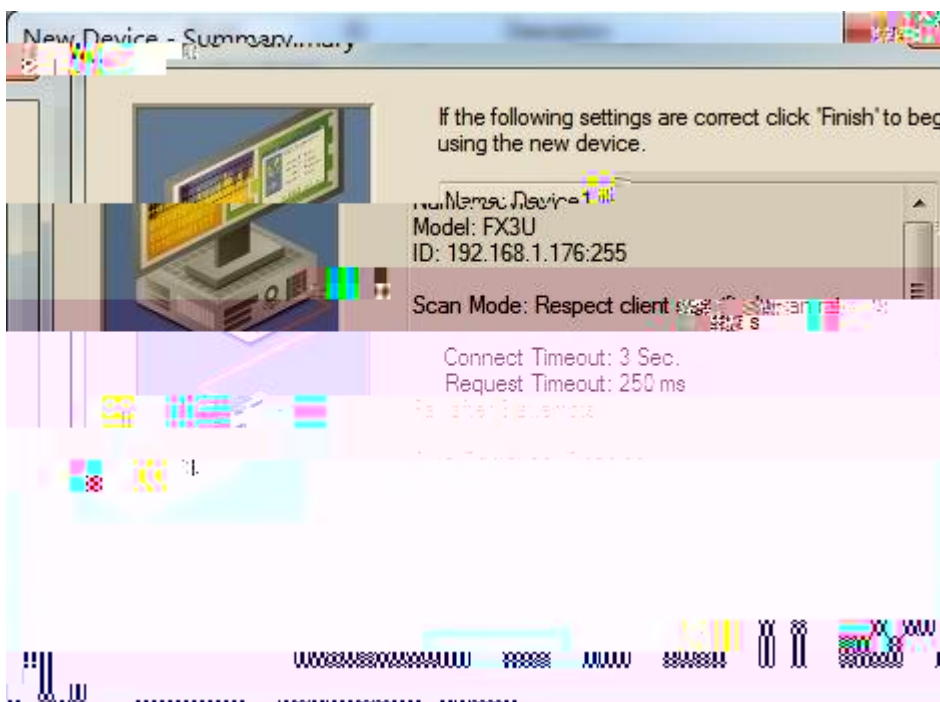
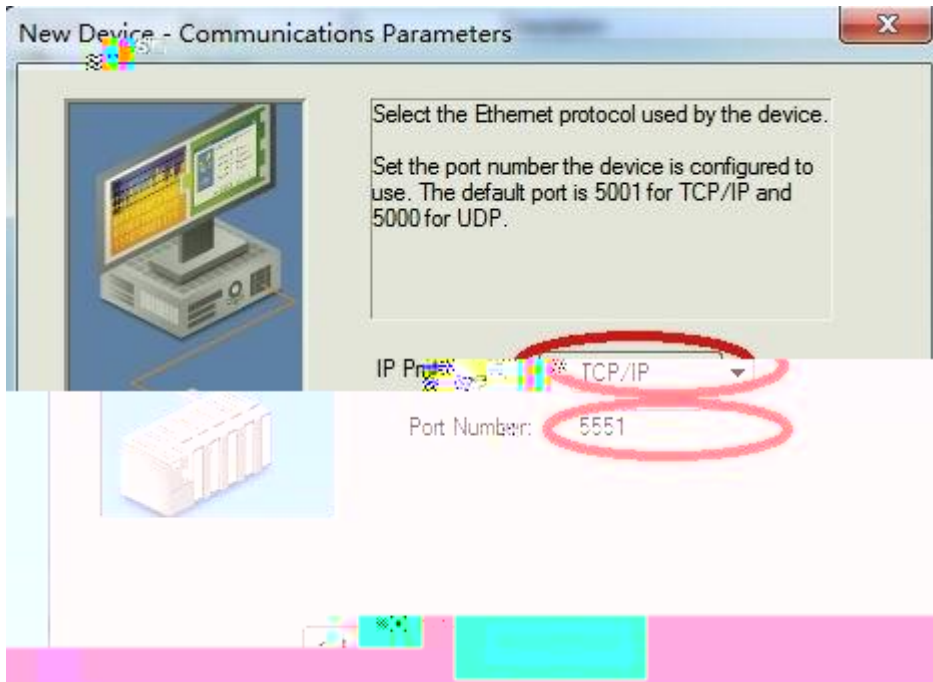
5 PLC



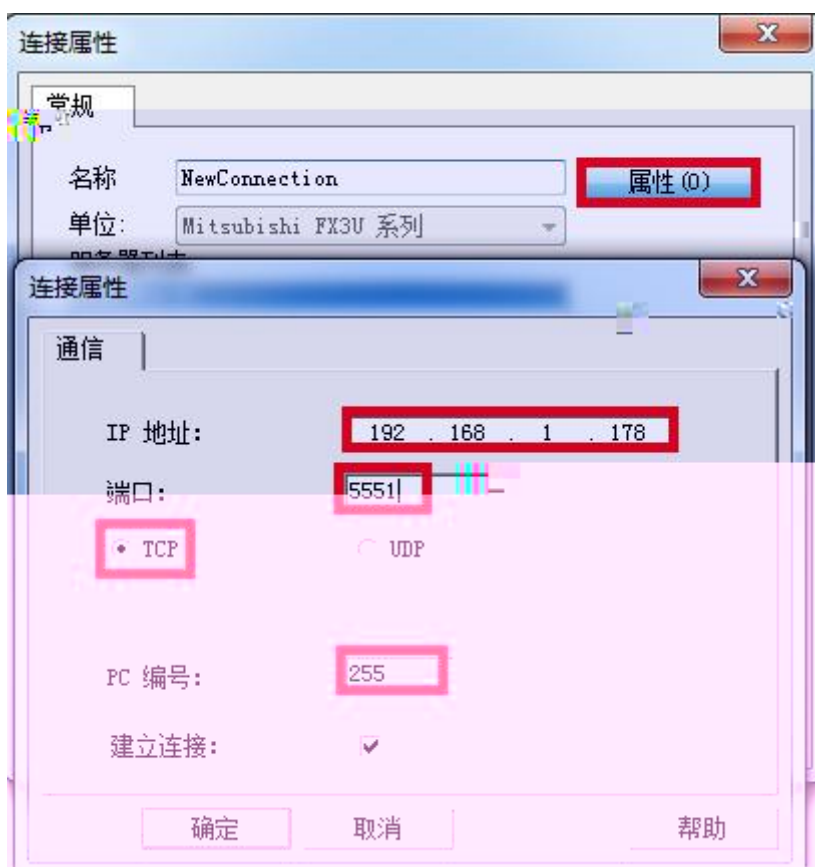
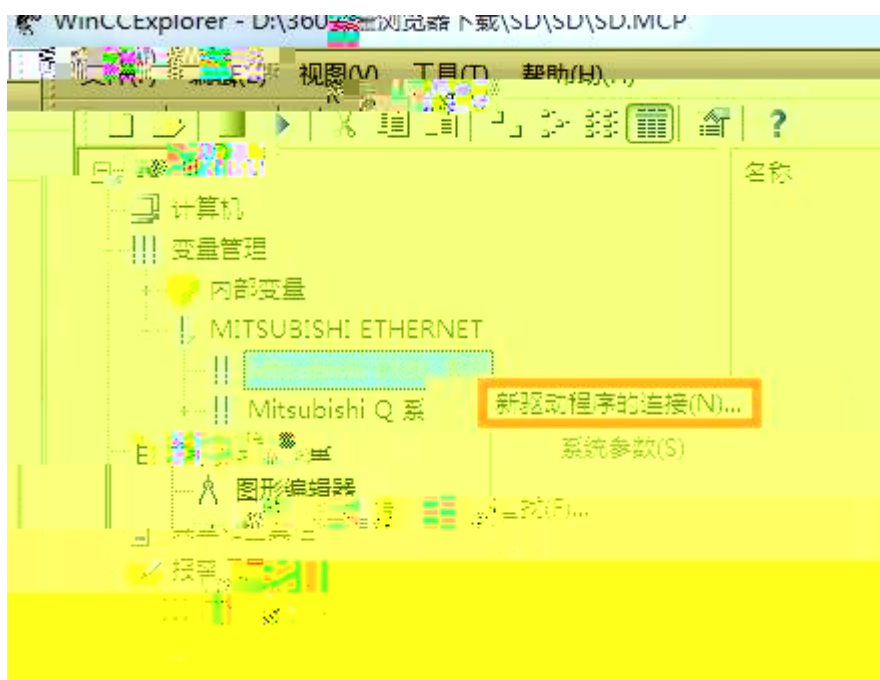
6. IP 255 255



7.IP "TCP/IP" 5551

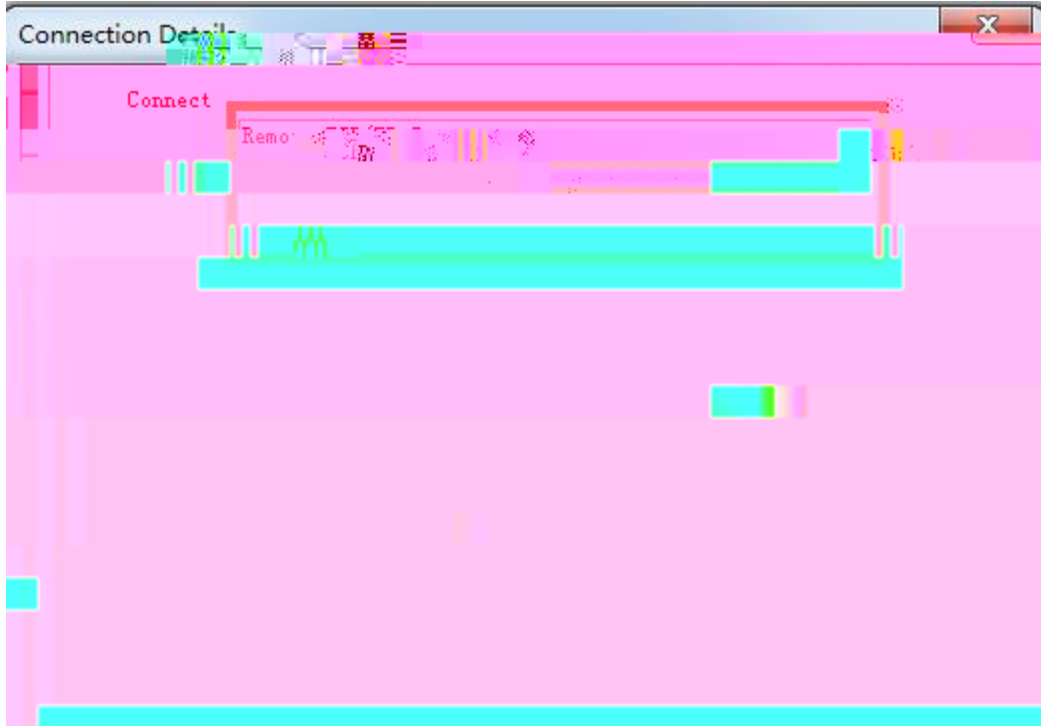


4.6 RVNet-FX WINCC



30 OqfUecp54

40 EqppgevkqplEqppgeV Tg o qvg VERIKR Ugtxgt TXPgv/HZ KR Ugtxkeg
 724 JQM_ 3



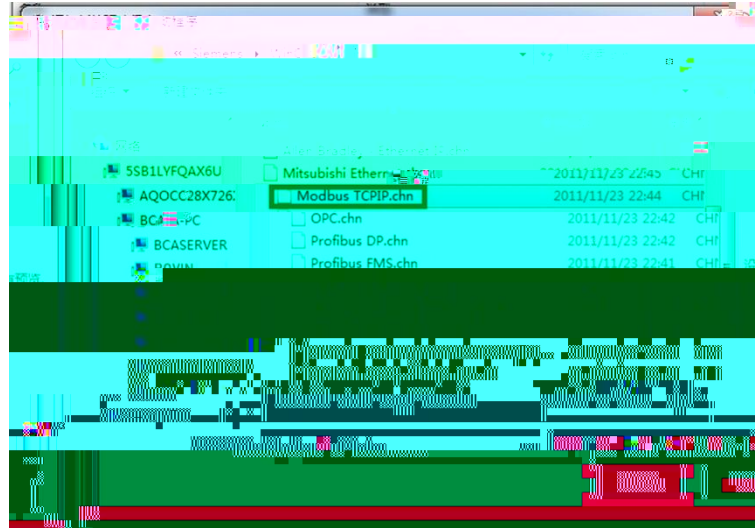
3

50 OqfUec3 Fgxkeg KF RNE 3 25<JQNFkPI TGIKUVGT
 Cfftguu ? 3523 NgpiVj ? 322

60 6 3523 6 3622 38 HZ RNE F:222
 F:322

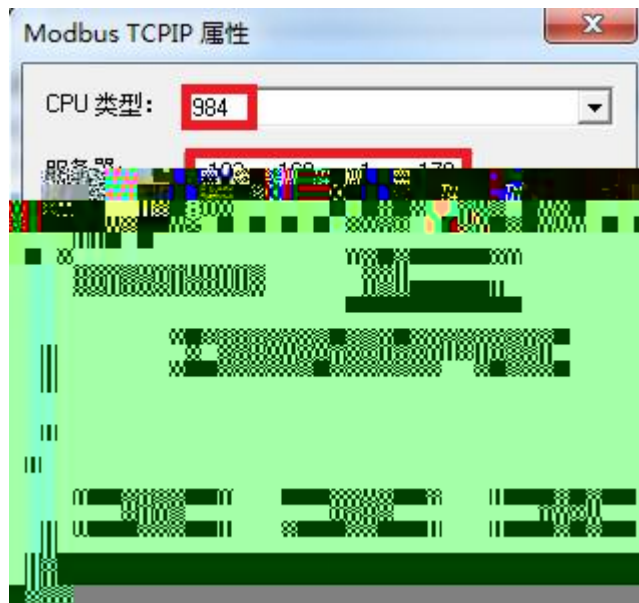
5.1 WINCC ModbusTCP RVNet-FX

1. Wincc
“Modbus TCPIP.chn”



2. “Modbus TCPIP/IP
CPU

#1” “ ” “ ”
984 “ ” RVNet-FX IP ,



3. “ ”
“ ” “4x”

DO “ ”

” “4x”_

VOE
s e

7.

2755

250101

0531-88689022

0531-88689022

111

266107

0532-68894021 83029299

0532-83029299

18753243991 garywei@dingtalk.com

www.roviniot.com

